

The New CartoPhilatelist

No. 31 October, 2010

New_CartoPhilatelist_n31_OCT_2010.pdf

ISSN 1930-2053

Journal of the CartoPhilatelic Society

©The CartoPhilatelic Society

All Rights Reserved

No Unauthorized Reproduction, Transcription, or Resale

Without The Written Permission of the President,

CartoPhilatelic Society. For Contact Information:

www.mapsonstamps.com

www.cartophilately.org



Famous Trains Routes on Stamps by David Wolfersberger.

This is part two of a series on stamps that contain both maps and trains. The subject of this article is famous train routes – the Trans-Siberian Railway; the Orient Express; the Eurotunnel Express; and France’s TVG lines.

The Trans-Siberian Railway.

One of the most storied railroads in the world, the Trans-Siberian Railway (original name from Russian: “Great Serbian Way”), has been commemorated on only a few stamps that have maps. Construction of this route from Moscow to Vladivostok, on Russia’s far eastern coast, began in 1891 and was completed in 1913. The main purpose of the line was to ship goods from Vladivostok, a major port on the Sea of Japan, to the more populated western part of Russia. Its total length is 9288 km (5573 miles), the longest continuous route in the world. Travel time is about 6-7 days to complete the entire route, which goes through 2 continents and 8 time zones.

Two additional routes depart from the main Trans-Siberian route and go to Beijing. The Trans-Manchurian line leaves the main line at Tarskaya, Russia then travels through Manchuria to Beijing. The Trans-Mongolian Railway branches off from the main line at Ulan Ude, Russia, and goes through Mongolia to Beijing. Neither of these routes has been shown on stamps.

Russia Sc. 6683 (Figure 34) is a souvenir sheet issued for the 100th anniversary of the line. On the margin is the route of the Trans-Siberian Railway on a map of



Fig. 34 Russia Sc. 6683.

the area. Only the origin (Moscow) and terminus (Vladivostok) are shown. The margin also has the image of the monument at the end of the railway, with the mileage (9288 km) shown. A long truss bridge is also shown. While it is not possible to identify this bridge, the Khabarovsk Bridge has a similar design and appearance. On the stamp itself is an old steam locomotive exiting a tunnel.

A set from the Congo People’s Republic (Sc. 899-900, Figures 35 and 36) are the only other stamps that have a map of the Trans-Siberian Railway. The first has a nice map of the route on a map of Europe and Asia while the other has the map partially hidden by a steam locomotive and passenger cars. Of special note is that the stamps show the mileage between Moscow and Vladivostok as 7371 km. This is obviously an error the source of which I have been unable to trace.

This route is still fully functional with trains daily. Fares to ride the entire route

Continued on page 2.

Inside this issue:

Famous Train Routes	1
Stamps in Maps on Stamps	5
Autographs on Map Stamps	7
All Roads Lead to Rome	8
A Brief History of Palau	9

Special points of interest:

New Issue Illustrations	4
Scanning Project Status	9
Society News	10
New Issue Checklist	12

(Train Routes, contd. From p. 1.)



Fig. 35 Congo Sc 899.



Fig. 36 Congo Sc 900.

range from a few hundred dollars for third class to many thousands (\$15,000+) for private accommodations (I think these are in cars owned by tour companies and pulled by the Trans-Siberian Railway locomotives).

The Orient Express

The Orient Express is probably one of the best known rail routes in the world. After seeing how George Pullman was establishing night train service in the United States, Belgian Georges Nagelmackers founded *Compagnie Internationale des Wagons-Lits (International Sleeping-Car Company)* in 1874 to provide night train service throughout Europe. The company operated about 29 different lines at one time or another. Interestingly it operated the Trans-Siberian Railway from 1898 to 1917.

Wagon-Lits owned various rail cars such as sleepers and dining cars. These cars were then attached to an existing train or pulled by the locomotives of the national railway in whichever country they were operated. The original Orient Express passed through 13 countries, necessitating a change in locomotives as it went from country to country. Passengers would pay a first class rate to the railroad, then a supplement to Wagon-Lits for the use of their facilities. Wagon-Lits provided all of the staff for their cars along with everything else needed for the journey such as linens and food. The logo of the company, featuring two lions holding the letters

W and L is shown in Mongolia Sc 2076 (Figure 37).



Fig. 37 Mongolia Sc 2076.

In 1883 the Wagon-Lits company initiated a twice weekly train service from Paris Gare de l'Est station to Istanbul. This service involved the train to Giurgiu, Romania, a ferry over the Danube to Ruse, Bulgaria, and finally a 14 hour boat trip across the Black Sea to complete the journey to Istanbul. The route also took the train through Strasbourg, Munich, Vienna, and Budapest. A map of this route is shown on Guyana 3407 (Figure 38), on the back cover of a booklet from Yugoslavia "Development of the Railway," (Sc 2420 note, Figure 39) and on Romania Sc 3165 (Figure 40). The map on the Guyana sheet is very detailed while the others show only major cities on the route.

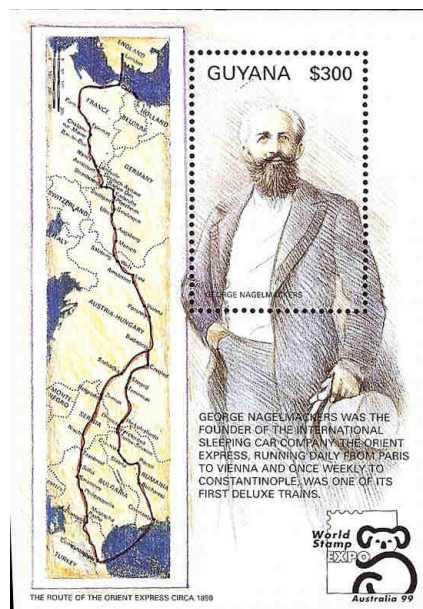


Fig. 38 Guyana Sc 3407.

In 1888 the route was completed allowing all rail travel from Paris to Istanbul.

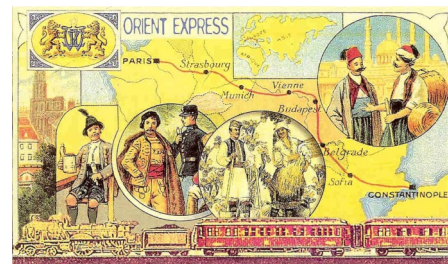


Fig. 39. Yugoslavia Sc 2420.



Fig. 40. Romania Sc 3165.

This route was the same to Budapest, and then took a more southerly route, through Belgrade and Sofia and on to Istanbul. The route is also shown on Guyana Sc 3407. Note that the map on the Guyana stamp is oriented with west at the top.

Bulgaria Sc 4483 (Figure 41) shows the route from Paris to Istanbul on the label that is part of the sheet. The map is rather hard to see but shows Europe with the route on it, and the major cities noted on the left side of the label – Paris, Munich, Vienna, Belgrade, Sofia and Istanbul. The stamp commemorates the 120th anniversary of the opening the "all land route" that now passed through Sofia. There are two different stamps as part of the sheet. One shows a Wagon-Lits sleeper car, the other the locomotive of the Bulgarian State Railway which would have pulled the train on its trip through Bulgaria.

The Guyana stamp also shows the route extending to Calais, across the English Channel, and to London. The route from Paris to London was served by train from London to Dover, a ferry across the Channel, then on a train for the trip Calais to Paris. At Paris the sleeper cars boarded at Calais would be

(Continued on page 3)

(Train Routes, contd. From p. 2.)



Fig. 41 Bulgaria Sc 4483.

attached to the Orient Express for the continuing journey, while other cars terminated in Paris.

The Paris-Istanbul route is shown on an additional souvenir sheet and one stamp. North Korea Sc 2401 (Figure 42) shows part of the route (tan line). Bosnia & Herzegovina (Serb) Sc 346 (Figure 43) shows the entire route. The sheet and stamp introduce another line – the Simplon Orient Express. This was also a Wagon-Lits route started in 1919 mainly to by-pass Germany. This route departed from Paris Gare de Lyon station, then on to Dijon, Lausanne, Milan, Venice, Zagreb, Sofia and Istanbul. The route is clearly shown on Mongolia Sc 2077 (Figure 44) and was named for the Simplon Tunnel through which it went while transverseing Switzerland.



Fig. 42 North Korea Sc 2401



Fig. 43 Bosnia & Herzegovina (Serb) Sc 346 Part of sheet.

The Simplon Orient Express also operated other routes as shown in Figure 44. These included routes from Oostende, Belgium to Vienna to connect with the train to Istanbul, two routes in Germany, and an extension to Athens. The Simplon Orient Express became the Direct Orient Express in 1962 and ceased operations in 1977. The Simplon Orient Express route is also shown on Bosnia & Herzegovina (Serb) Sc 346 (Figure 43).

A final train to bear the name Orient Express was the Arlberg Orient Express which operated from Paris Gare de l'Est through Switzerland, Austria, and Budapest then on to Bucharest or Athens depending on the day. This operated from 1932 to 1962, being renamed the Arlberg Express with a much reduced route. It ceased operations in 2007.

The Orient Express slowly reduced service as high speed trains and cheap air fares became common in Europe. It made its last run on December 12, 2009, by which time it had been reduced to a night train operating only from Strasbourg to Vienna with three sleeper cars and a coach car with seats only.

However, the Orient Express name is not dead. Today the Venice Simplon Orient Express operates as a tourist train, albeit a limited one, from March through November. The main route is London to Venice. This company also operates the Eastern and Oriental Express in Thailand, Malaysia, Singapore

and Laos. I have not found any stamps that feature these routes.

An interesting sidelight is the Taurus Express route shown on Mongolia Sc 2077 (Figure 44). This was another train operated by Compagnie Internationale des Wagons-Lits. The route was from Haydarpasa, on the Asiatic side of the Bosphorus from Istanbul to Aleppo, where it splits with one part going south through Israel to Cairo, and the other east, eventually ending in Mosul. From there, passengers are transported by motor coach to Kirkuk where they board an Iraq train for Baghdad and the Basra. It began operation in 1930 and parts still operate today (for example Istanbul to Damascus).



Fig. 44 Mongolia Sc 2077.

Another sheet, Uganda Sc 1409 (Figure 45) is labeled "Orient Express" yet the map on the margin shows mostly the Taurus Express line in the Middle East. There are a couple lines on the stamp which are probably part of the Orient Express routes but they are not very prominent.

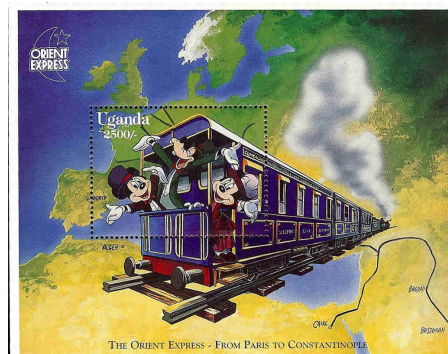


Fig. 45 Uganda Sc 1409.

(Continued on page 4.)

(Train Routes, contd. From p. 3)

Other Famous Train Routes

Two other famous train routes have been shown on stamps. Cambodia Sc 1075 (Figure 46), a souvenir sheet, features the train “Le Shuttle” (now the Eurotunnel Shuttle) that runs through the Channel Tunnel between Folkestone and Calais. Passenger and freight vehicles are carried on different trains. Service began in late 1994. The map on the stamp is rather simple, with Channel Tunnel in red with the terminals both noted by large dots although not by name. The cities identified in Great Britain are Brighton and Dover, and in France the city of Boulogne. None of these are terminals for the Shuttle.



Fig. 46 Cambodia Sc 1075.

The second somewhat famous train route shown on a stamp is TGV Est (France Sc 3337, Figure 47). TGV Est is the newest part of the high speed TGV system in France. The part from Paris to Metz was completed and opened in 2007. For a while, it claimed the fastest speed for a scheduled passenger train at 320 km/hr (200 mph). Currently about three-fourths of the planned 252 miles is completed and in operation. The map on the stamp seems to show both the completed and planned routes. The planned routes are currently operated on lower speed rail lines. ■



Fig. 47 France Sc 3337.

References Consulted:

- <http://www.visitrussia.com/transsib/transsib.htm>
- http://en.wikipedia.org/wiki/Trans-Siberian_Railway#cite_note-1
- <http://www.seat61.com/OrientExpress.htm#real>
- <http://mikes.railhistory.railfan.net/r045.html>
- http://en.wikipedia.org/wiki/Compagnie_Internationale_des_Wagons-Lits
- http://en.wikipedia.org/wiki/Orient_Express
- <http://mikes.railhistory.railfan.net/r100.html>
- <http://en.wikipedia.org/wiki/TGV>
- http://en.wikipedia.org/wiki/LGV_Est

New Issue Illustrations, by David Wolfersberger.



Argentina Postcard.



Australia Sc 3275b

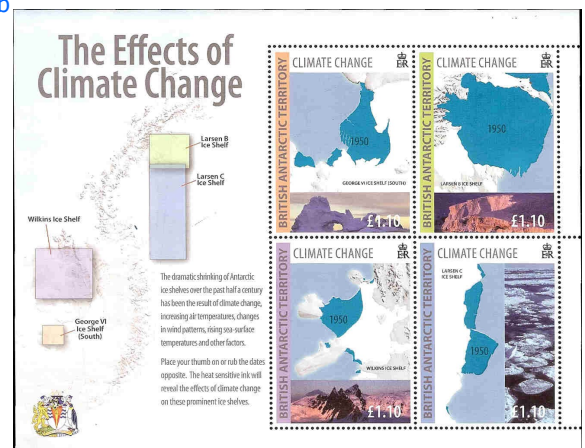


Wallis & Futuna Sc 680.



Korea (South) Sc 2322.

Croatia Sc 773.



British Antarctic Territory Sc 147

A Mini-Topic Collection: Stamps in Maps on Stamps, by Lou Guadagno.

Almost from the start of my stamp on stamp collecting, I made lists of the topic or topics in the design. After a while, multiple stamps in a design made this a daunting task, and I gave it up. However, as I saw various SOS design types being repeated, I did make lists of these, and the list has grown considerably.

Just in the last year, as I was getting back to working on my collection, I came across two varieties (one of which was described in the article, "One Man's Meat..." in the July 2010 issue) that I realized were for a design type I hadn't recognized previously, as the issues had been spread out over a period of sixty years.

This design type showed the stamps on stamps enclosed in an outline map of the issuing country which I simply called "Stamps in Maps on Stamps", and I think these stamps, when shown together and not lost in the greater collection, make a very interesting display. While the maps are basically simple outlines, there are some very involved designs with many tiny SOS; others just show one stamp and there are even some imprinted postal cards to spice up the collection. I even found a "sneaky" one!

The first country to introduce the design was Russia--U.S.S.R., with the 15k value of the 25th Anniversary of Soviet Stamps set of three (Sc 1080) issued November 6, 1946; reproduced in black on a solid and symbolic red map of the Soviet Union are nine stamps issued from 1942 to 1946 which show Russian WWII patriotic issues. In 1947 the same design was reissued in a block of four on an imperf souvenir sheet (Sc 1080a).



Russia Sc 1080.

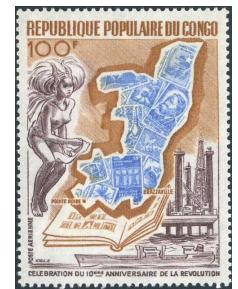
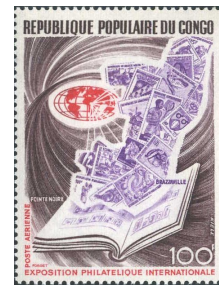
It would be almost a quarter of a century before the second of the design type issues; this was a very unusual stamp in so many ways that it was not recognized as a stamp on stamp until many years later. On September 15, 1970, the Central African Republic issued a perforated triptych stamp of two imperforate 100 fr designs separated by an imprinted central label to commemorate KNOKPHILA 70, the 6th International Philatelic Exhibition at Knokke (Sc C82). When I saw this stamp for the first time in 2001 and examined the label, I discovered that Knokke was in Belgium and that the emblem was that of the Philatelic Club of Belgium, a wreath enclosing a map of Belgium containing a tiny simplified reproduction of Belgium Sc # 2! This is the only example of this type where neither the stamp on stamp nor the map is the focal point of the design, but it certainly belongs in the collection.



Central African Republic Sc C82.

The next of the type to be issued, on August 12, 1973, was a more ambitious set of four stamps of two designs from the Peoples Republic of the Congo or Congo-Brazzaville. Both designs show a group of stamps enclosed in a simplified map of Congo rising from a stamp album, but two stamps (Sc C165, C168), are inscribed as commemorating the 10th Anniversary of the Revolution and reproduce ten stamps of Congo issued from 1969-1972, the other two (Sc C166-67), are inscribed as commemorating the International Philatelic Exhibition, and reproduce two stamps from Congo, one from France and 13 from various African nations.

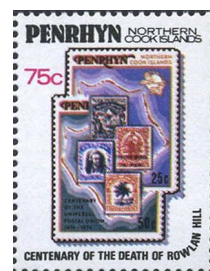
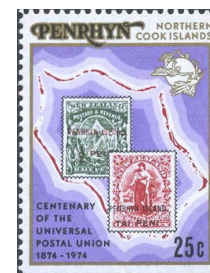
Two separate issues from Penrhyn Island should be shown together because they make an unusual display.



Peoples Republic of the Congo
Sc C167, C168.

On September 27, 1974, two stamps were issued to commemorate the Centenary of the UPU (Sc 64-5); the 25c and 50c values reproduce respectively, stamps of 1902 and 1920 in the lagoon surrounded by the coral reef that makes up the Penrhyn atoll not many would note they were looking at a map!

Then, on September 26, 1979, Penrhyn commemorated the Death Centenary of Sir Rowland Hill with a unique SOS (Sc 108), that overlapped the two 1974 stamps, so that this time, all four stamps were reproduced inside the atoll making it a Stamp on Stamp on Stamp or, a Stamp on Stamp in Map on Stamp! An unlisted sheetlet of four se-tenant pairs of #107-08 and a souvenir sheet (Sc 110a) with the background changed from white to cream was also issued.



Penrhyn Sc 64, 65
108

On December 17, 1981, Madagascar, inscribed as the Malagasy Republic, to commemorate Stamp Day, issued the first of this design type to reproduce stamps in full color (Sc # C177); eleven of the twelve stamps inside the map of

(Continued on page 6)

(Stamp on Stamp contd. from p5.)

Madagascar are previous Stamp Day issues, including the 1966 SOS design, making this the first Stamp on Stamp in Map on Stamp!



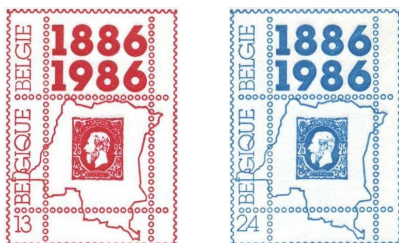
Madagascar Sc C177.

In 1986, both Belgium and Zaire commemorated the Centenary of the First Stamps of the Belgian Congo by issuing SOS with the common design of an 1886 Congo State stamp enclosed in a white map of Zaire; the Zaire stamp (Sc 1230) was issued on January 22, 1986 and is square in shape and the Belgium stamp (Sc 1236) was issued January 25, 1986, and is a rectangle shape. Though "stamp twin" in design, the different size formats set them apart and both are very handsome stamps that display well together. As a little spice to this collection, Belgium also issued two imprinted envelopes, a 13fr red (Mi U19) and 24 fr blue (Mi U20) on March 17, 1986 with the same design but the imprinted stamps have a white background.



Zaire Sc 1230

Belgium Sc 1236



Belgium Sc Mi U 19, 20.

On July 23, 1986, Romania, in a series publicizing Romanian polar research, issued the only one of this design type so far, *not* to have the issuing country map on the stamp. The 50B (Sc # 3393) shows a map of Tierra del Fuego, an area at the tip of South America shared by Chile and Argentina, enclosing paintings of Julius Popper and his Tierra del Fuego 10 c gold local stamp. This was an SOS design that most new issue dealer at that time missed offering, but I recognized it because I owned a block of the local stamps!



Romania Sc 3393.

Here's the "sneaky" one: Nigeria on April 11, 1994 issued a set of four stamps to note the 25th Anniversary of the Nigerian Philatelic Service; on the N5 design (Sc 632) is a photo of a montage of stamps mounted in a map of Nigeria that, according to a publicity release, graces the wall of a post office there. Of course, all of the hundreds of tiny stamps are now unidentifiable, but if a photo of the stamp map should ever turn up... (I did write to their NYC agency for a copy but never received a reply.)



Nigeria Sc 632.

One of my favorites in this design type was issued January 20, 2007, by Mayotte, an overseas Community of France in the Indian Ocean, to commemorate the 10th Anniversary of the Resumption of Stamp Issuing; the € 0,58 design (Sc 230) reproduces inside the very irregular shapes of Mayotte and another islet, portions of ten previously issued stamps. If I have to quibble about this stamp, it is that it should have been issued in a larger size to really show off the SOS.



Mayotte, Sc 230.

Last, but not least, is a very interesting stamp (Sc 1450), issued by Liechtenstein on September 7, 2009 to honor the 75th Anniversary of the Liechtenstein Philatelic Societies Union; the designer, S. Bockmüller, chose a very subtle approach to the type by using a white outline with tiny black dots to form a map of the Principality to enclose a detail of the stamp on the souvenir sheet issued in 1934, the year the Union was founded. If you examine the stamp around the map area you will see that the design of the reproduced stamp is continued in very soft shades.



Liechtenstein Sc 1450.

By making a display of these issues, I think you will find that even though there is a common design type, each is different enough so that there is no chance of boring repetition; in fact, I think this is one of the best, if not the best idea for a mini collection--whether you collect Stamps on Stamps or Maps on Stamps. I hope you try it. ■

Many years ago, I had promised my friend, Mark Larkin, an article on Maps on Stamps on Stamps, but the periodical was discontinued before I could produce it – so at last, Mark, this is for you. Lou Guadagno.

Please update your Email account to the Editor.

Autographs on Map Stamps

by Miklos Pinther

Considering the dearth of information in the literature I venture to say there are not many autograph collectors among cartophilatelists. That is not to say there aren't such items around to be had or appreciated. Indeed, one must admit that a cover with the signature of a relevant personage – explorer, pilot, designer – does enhance its value and could be a captivating addition to a collection or an exhibit.

Here, for example, is a commemorative envelope that sports one of the few, good map stamps from the United Nations. It would be a rather common, readily available, first day cover were it not for the bold signature of Eleanor Roosevelt. Her autograph gives a special emphasis to her personal involvement in the drafting of the Universal Declaration of Human Rights.

Autographs can also be found directly on stamps. The example illustrated in Figure 2 is that of Admiral Richard E. Byrd on the stamp issued for the occasion of his second Antarctic expedition. By the way, Admiral Byrd was known to be quite available to sign covers, and basically any other document. So, there

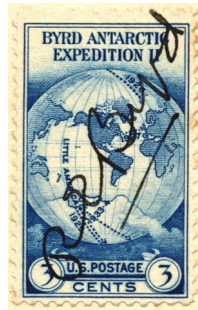


Fig. 2 Admiral Byrd's signature on US stamp Sc 733.

are lots of examples, which he deemed not only as “recognition” of his personal achievements but also as promotion for the scientific fieldwork he endeavored to conduct.

The block of eight stamps shown in Figure 3 is what prompted me to write this brief note. The item appeared in the June 2010 sale of the Robert A. Siegel Auction Galleries. The interesting thing about this otherwise minor map (or globe) stamp is the signature of Marie Bard diagonally across the block. The auction catalog provides the following description, “a wonderful collateral

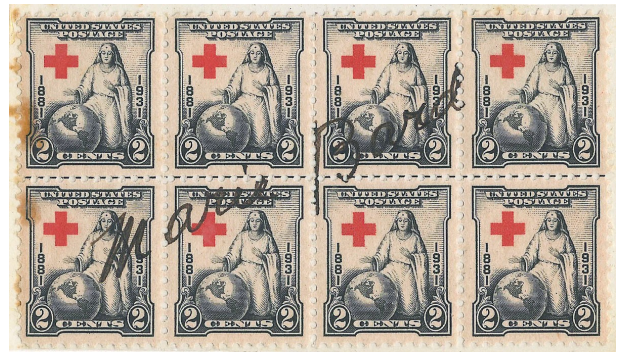


Fig. 3 Marie Bard's signature on a block of US stamp Sc #702, with detail of nurse.

item, Marie Bard is considered the founder of Army Community Service, a living person is not to be portrayed on a United States stamp, but apparently she was.”

Now, while it is true that living persons are not “portrayed” on US stamps, the question is, is this a “faithful likeness” of Marie Bard? Or was she just a model for the nurse shown? Regardless, it caught the fancy of one collector who was willing to pay \$747.50 (including commission) for it.

The situation, of course, varies with postal administrations. The final example is a pair of stamps from Brazil issued on the occasion of the September 1-7, 1947 visit of President Truman to Rio de Janeiro. His signature spans the pair in black ink. ■

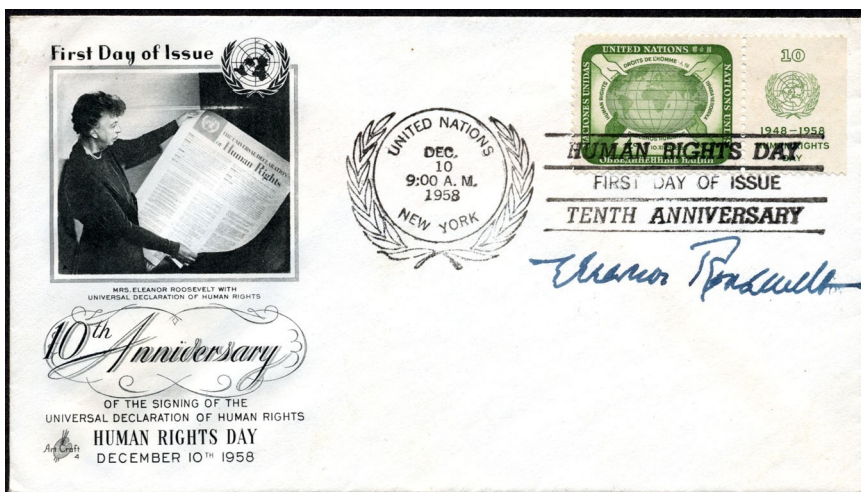


Fig. 1 Eleanor Roosevelt's signature on UN FDC Sc 67.



Fig. 4 President Truman's signature on a pair of Brazil stamp Sc 673.

All Roads Lead to Rome

by Volker Woesner

Whereas the original map is untouched in the Austrian National Library in Vienna and not on display, a lot of copies of the map have been made. In these copies (Fig.2) the drawings and inscriptions were marked up in order to make them readable.

The Romans built about 53,000 miles (85,000 km) of roads in their empire and were famous for preserving a straight line from point to point regardless of obstacles. The massive Roman roads set the standard of road cross sections for the next 2,000 years. Up to the end of the 18th century all major roads in Europe had been built by the old Roman cross sections with ditches and drained construction of several layers of sand and broken stones. ■



Fig. 1 Roman road map section VI, Romania

In 2007 a map was included in the UNESCO Memory Register. It was a copy of a Roman road map presumably from the 4th century AD (Fig. 1-3). A monk made this copy of the original map in 1265. It is the so-called Peutinger table of 1507. The map is a parchment scroll 0,34m wide and 6,82m long (13in x 268in). It features the network of all main roads in the Roman Empire from Spain in the west to India in the east. The map represents the roads as a series of roughly parallel lines with destinations and distances that have been marked. Both the Mediterranean, continents and roads have been stretched and flattened (Fig.2).

Instead of being oriented from north to south, the map runs from west to east. The distortions would have been of little concern as the table was intended for use by overland travelers and not for naval navigation. In original the map consists of 11 sheets and looks like Fig.1+3.



Fig.2 Section IV (Rome)

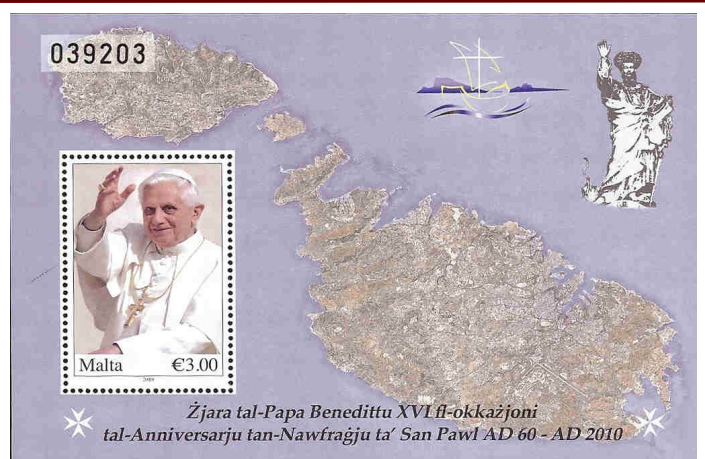
Fig.3 Roman road map, section V/VI (Vienna, Austria)



New Issue Illustrations Continued.



Cyprus Sc 1116.



Malta Sc 1409.

Scanning Project Status

The hot summer in the northern hemisphere has unfortunately slowed some of the work on the scanning project. Introduced in TNCP #30, the aim of the Scanning Project is to create a set of high-quality color digital images of the map stamps listed in the Society's Maps on Stamps (MoS) Checklist. Comments received from the officers were reviewed and replies were drafted for the most important comments. The comments and subsequent discussions continue to be important, helping to define the overall scope and goals of the project. The ques-

tion of "how many stamps will be scanned?" was of concern to all of the Officers. "We want to keep the project as dynamic as possible, at this point in time, said Vice President Mark Honig, "We are not setting any time line. Until we know how many members may be interested in participating and what areas they collect, it is difficult to give any exact number. We are looking at 'grade' as defined in the Checklist, as a possible grouping for a first set goal, however we need to be accommodating to the input from participating members." The proposal document, which

will serve as a guideline for the scanning work, is currently being revised, along with compiling information for members who may wish to participate in the project. A project web-site has been created, however any substantial amount of content on the site is still lacking. The Society's web admin Reese Plews, hopes to have the site open at the end of Sept, 2010. If you are interested in learning more or participating in the Scanning Project, please contact Mark Honig directly at mhonig@cartophilately.org. ■

P is for

.... Palau, Population 21,000, located in the Northern Pacific Ocean 500 miles east of the Philippines and 2,000 miles south of Tokyo. Palau consists of more than 200 islands in the Caroline chain; only eight of which are permanently inhabited. The Palau archipelago stretches over 150 miles but has only 170 square miles of dry land. The capital, Koror, is 530 miles from Manila.

The locals pronounce its name as *Be-lau*. Early Palauans are thought to have migrated from Melanesia, Micronesia and Polynesia several thousand years BC and have since blended with European and Japanese peoples.

In the late 19th century, Britain, Spain and Imperial Germany claimed the islands. In 1885 Pope Leo XIII recognized the Spanish claim. Palau then became part of the Spanish East Indies along with the Mariana, Caroline and Marshall Islands.

After being defeated in the Spanish-American war, Spain sold the Palau archipelago to Imperial Germany in 1899. Palau was administered from German New Guinea, for 15 years, a period of economic development. German engineers exploited the islands' deposits of bauxite, phosphate, and harvested copra.

In 1914 Japan joined the war against the German Empire and seized Palau. The Japanese presence made Palau a major target for the Allied forces in World War II. Peleliu was a scene of intense fighting between American and Japanese forces in 1944.



Palau Sc 302.

In 1947, the United Nations decided the United States would administer Palau as part of the Trust Territory of the Pacific Islands. In 1979, Palauans voted against joining the Federated States of Micronesia because of language and cultural differences. Palau voted in 1994 to freely associate with the United States while retaining independence.

Noted for its colorful stamps, the sheet above was issued in 1992 to mark the *Age of Discovery*. ~ Martin Oakes. ■



Sc 296 showing Peleliu.

Society News, by David Wolfersberger.

Change of Officers

I am sorry to report that Alf Jordan has decided to step down as Secretary/Treasurer of the Society. Alf was the driving force to reorganize the Society in 2003. Through Alf's leadership, former members were contacted, an editor for *The New CartoPhilatelist* was recruited, and the Society was "restarted." Alf served as President until elections were held in 2004. From then until now he has been Secretary/Treasurer.

Alf did a super job in maintaining the Society's accounting books and membership roll. He also was essentially the publisher of *The New CartoPhilatelist* as he distributed each issue to the email membership, and printed and mailed the hard copies. This was a huge job as I found when pinch hitting for Alf during an illness. The amount of time and effort that Alf spent printing 90+ copies each quarter was staggering.

Without Alf's leadership, time commitment and dedication, the CartoPhilatelic Society would not be in existence today. We all owe Alf our thanks for the tremendous job he did in getting the Society restarted and keeping it functioning smoothly for the last 7 years.

Thanks Alf, and best wishes as you pursue your map collecting and research issues.

Fortunately, Ed Vallery, Representative at Large, has agreed to take over as Treasurer. Ed will work with Alf over the next several weeks to assure a smooth transition. The replacements for Secretary and Representative at Large will be announced later. Thanks to Ed for stepping forward to help out.

Printing *The New CartoPhilatelist*

An option of the using MagCloud, a division of Hewlett-Packard, to print *The New CartoPhilatelist* is being evaluated. In fact this issue was printed by MagCloud, sent to Martin in bulk who then applied mailing labels and sent them on their way. While a final cost analysis has yet to be completed, it is estimated that using MagCloud will increase print-

ing costs by about \$2.00 per year. The print cost increase is obvious as we are paying to have someone do the printing. The mailing costs may increase because MagCloud uses a heavier paper which may lead to higher postage rates.

One of the main reasons for considering MagCloud is to relieve either the Editor or the Secretary of the need to print copies of the journal. As you can imagine, printing 90 copies of the 12 or more pages that are in each issue becomes a very time consuming job.

Your input is important. Please respond to David Wolfersberger with your comments:

- * Do you like the higher quality paper?
- * Was your copy received in a timely manner and in good condition?
- * Would you be willing to have a dues increase of about \$2 to allow the use of MagCloud?

Richmond Meeting

Three members of the Society, Martin Oakes, Carol Litchfield, and David Wolfersberger, attended the meeting in Richmond on August 14. Martin demonstrated a new macro that he is developing that will allow users to integrate an updated Excel version of the Map on Stamps Checklist with the user's personal copy of an older version. This is needed because members often add personal notes to the Checklist which then must be copied to the updated Checklist or lost. Martin's macro will allow a smooth integration of the old and new Checklists without losing personal comments or creating duplicate entries.

Martin expects the Macro to be completed by year-end. It was decided to issue Rev. 5 of the Checklist to coincide with the completion of the macro. It was also decided to not try to change the Grades used on the Checklist at this time, but to undertake that project for Rev. 6.

We also discussed the possibility of using MagCloud to print and distribute *The New CartoPhilatelist*. See above for more details. It was also discussed having the Checklist available to members on line. This will be discussed in the future.

New Issues

Australia issued a set of stamps "Great Australian Railway Journeys," featuring four famous rail routes in the country. The stamps were issued in several formats including a "prestige" booklet with all of the stamps plus postal cards, and a booklet and souvenir sheet showing the Kuranda Scenic Railway, Queensland. It is this souvenir sheet (Sc 3257b) that is of interest to us as it shows a map of the train route on the margin. The other stamps show pictures of the various trains. Note that the same design as the souvenir sheet is in the prestige booklet as a booklet pane in a slightly different size.

The Kuranda Scenic Railway was constructed between 1886 and 1891 through ruggedly beautiful land in northeastern Queensland. The route is from Cairns to Kuranda through the Barron Gorge. While the route is only 75 km long, there are 15 tunnels and 37 bridges through spectacular scenery. It was originally built as a commuter rail line but by 1936 became primarily a tourist railway attraction. The map on the souvenir sheet is quite detailed showing the rail line, many of the geographic features of the area, and manmade features such as the tunnels and a hydro-electric plant.

Uzbekistan issued two souvenir sheets which have maps of part of the Great Silk Road. The Great Silk Road was actually several trade routes connecting eastern and southern Europe and parts of Persia and southern Asia with China. In addition to the overland routes that many of us think about when the Great Silk Road is mentioned, there were several overseas routes connecting areas as far as Italy and eastern Africa with China and Southeast Asia. These routes were used for commercial trade among various countries, as well as cultural and technology trade. It is estimated that these routes began as early as 200 BC.

(New Issues continued from page 10.)

Modern roads often follow the route of the different Great Silk Road routes.

The first sheet (Sc 579) was issued to commemorate the 2200th anniversary of the city of Tashkent. The stamps on the sheet have images of important historical and public sites in Tashkent such as the Oily Majlis (Senate Building); the Amir Timur Museum; and what I think might be several mosques. There is also a stamp showing the Great Silk Road in Uzbekistan. The map extends into the margin and shows the route and major cities along the route. It also shows how the Great Silk Road actually had a couple of branches in this area.

The second sheet (Sc 582) has a very similar map of the Great Silk Road in Uzbekistan. This map actually is a bit clearer with some more detail than the previous map. The stamp on the sheet shows a gate at Bukhara (I think!) which perhaps was the gate used by the Great Silk Road on its entry into Bukhara. The maps on both of these sheets are very nice.

Mauritius issued a stamp with an excellent map of Rodrigues Island which is in the Indian Ocean, about 350 miles east of Mauritius. The stamp was issued in commemoration of the capture of the island in 1809 by the British during the Napoleonic War. It remained a British territory until independence was granted in 1968 when it became an autonomous region of Mauritius. The inscription on the stamp reads (as best I can translate): "In accordance with the orders of the Honourable Gouverneur and the Council of Bombay, the ground forces under my orders took possession of Isle of Rodrigue in the name of the Honourable English Company of the Eastern Indies.

HS Keating." Keating was the commander of the troops that captured Rodrigues Island. He used Rodrigues as a base of operations for further campaigns in the region. Rodrigues was named after the Portuguese explorer, Don Diego Rodrigues.

A nice souvenir sheet from the British Antarctic Territory (Sc 417) highlights the impact of climate change on the Antarctic. The sheet consists of 4 stamps, each showing the extent of a particular ice shelf in 1950 and now. On the margin is a map of part of the Antarctic showing the locations of the detailed maps on the stamps. There is a note that states "Place your thumb on or rub the dates opposite. The heat sensitive ink will reveal the effects of climate change on these ice shelves." However, I couldn't see any change in the images when I placed my finger on the dates. Maybe the change is non-reversible. Regardless, it is a very impressive sheet.

There are a number of additional excellent map stamps recently issued. Malta issued two – one a souvenir sheet commemorating the visit of Pope Benedict XVI (Sc 1409). The margin has what appears to be a satellite image of Malta. A single (Sc 1408) issued as part of a series of Special Occasions stamps, has a topographic map of Malta. The map notes the following coordinates: 14° 22.5'E, 35° 56.0N. This point is somewhere in the middle of Malta, I have no idea what is special about the location. Perhaps someone can help with interpreting this. (Miklos suggests that maybe this is the geographic center of Malta?)

A nice map of Bucharest is on a pair of Romanian stamps (Sc 5106-7). The map shows major roads and regions of Bu-

charest. A stamp issued by Wallis & Futuna (Sc 679) commemorates 50 years of the vote to establish Wallis & Futuna as a French Overseas Territory, rather than a territory under New Caledonia. The map shows the three major islands of the group on a ballot box. The maps do have some detail. A map with not much detail is on a United Arab Emirates souvenir sheet (Sc 976), 100 Years of Postal Service. There appears to be an old map of this region and the Persian Gulf, mostly an outline map with a few cities noted.

Several stamps and sheets show maps and/or views of forts and cities. A Cyprus souvenir sheet (Sc 1116) "Cyprus Through the Ages" has a nice plan of the old town of Nicosia during the siege of 1570. A Romanian sheet (Sc 5116) has a nice plan of the old city of Sighisara, while another sheet (Sc 5115a) is probably more a view of this city and not so much a map. A souvenir sheet from Russia (Sc 7164) commemorates the 1150th anniversary of the founding of Veliky Novgorod, or Great Novgorod ("Great New City"), which is located between Moscow and St. Petersburg. The stamp and sheet show a plan and view of the old part of the city.

A stamp from Slovenia (Sc 806) has a map of the northeastern part of Slovenia, with a lot of detail. The stamp was issued for the 150th anniversary of the transfer of the Diocese of Lavant from St. Andra in Austria to Maribor in Slovenia. Other new issues with good maps are noted in the Checklist update and some are illustrated.

Note: Unless noted, the stamps illustrated are from the author's personal collection.

New Issue Illustrations Continued.



Romania Sc 5106 - 7.



Malta Sc 1408.

MAPS ON STAMPS CHECKLIST
August to October 2010 Scott's Monthly Update

Issue Date	Country	Issue	Scott Cat. #	Format (Single Stamp Unless Noted)	Grade	Coverage	Face Value	Michel	SG
2009	Albania	UPU 135th anniv.	2869	Pair, 2869a	A	World map in background, UPU emblem	100l, 200l	3289-90	TBD
2009	Albania	Council of Europe, 60th anniv.	2874		A	Europe	150l	3299	3292
2009	Antigua	Sir Vere Cornwall Bird	3065	S/S	A	Nice outline map of Antigua on margin	\$6	TBD	MS4269
2010	Argentina	South American Regatta	2564	S/S of 2 2564a-b + 12 labels	A	South and Central America showing route	2x\$6	TBD	TBD
2010	Australia	Great Australian Train Journeys - Kuranda Scenic Railway	3257a	Booklet pane of 1	A	Route of Kuranda Railway on margin	\$2.10	MH452	3392a
2010	Australia	Great Australian Train Journeys - Kuranda Scenic Railway	3257b	S/S of 1	A	Route of Kuranda Railway on margin	\$2.10	B102	MS3388
2009	Bahrain	Arab Post Day	655a		A	World map	500f	TBD	MS823
2009	Bahrain	National Day	660-62		A	Bahrain	100f each	TBD	828-30
2009	Bahrain	National Day	663	S/S	A	Bahrain	250f	TBD	MS831
2009	British Antarctic Territory	Polar ice cap	417	S/S of 4	A	Maps showing Antarctic ice cap changes since 1950.	£1.10 ea	B17	M510
2010	Canada	Canada-Israel Friendship	2379a	Joint with Israel. Booklet	A	World map on selvage	\$1.70	TBD	2666
2010	Croatia	Shanghai Expo	773	S/S	A	Shanghai on stamp, subway map on margin	10k	B40	MS1030
2009	Cyprus	Cyprus through the ages	1116	Minisheet of 8, 1116a-h	AR	Old map of Nicosia on 1116f.	8x43c	1160-67	1198a
2009	Egypt	China-Africa Cooperation Conf.	2044		A	Small globe in emblem	150p	1884	2510
2010	Estonia	Lighthouse Alumine			A	Sea chart and map showing location lighthouse	42c	662	617d
2010	Estonia	Lighthouse Alemine			A	Sea chart and map showing location lighthouse	51c	663	617e
2009	Italy	Christain Roots in Europe	2960	S/S of 2, 2960a-b	A	Europe on both stamps	60c ea	B44	MS3230
2008	Korea (South)	King Sejong Antarctic Station	2270	Sheet of 10, 5 ea 2270a-b		Map?	250w each	2628-29	TBD
2009	Korea (South)	Organization for Economic Cooperation Forum	2322		A	World	250w	TBD	TBD
2010	Liechtenstein	Interpol	1485		A	World map on fingerprint	1.90fr	1560	TBD
2010	Malta	Special Occasions	1408		A	Malta	37c	1640	1664
2010	Malta	Pope Benedict's visit	1409	S/S	A	Malto	€ 3	B46	MS1665
2009	Mauritius	Bicent. Capture of Rodrigues Island	1077		AR	Rodrigues Island	Rs20	2076	1201
2010	Namibia	Independence 20th anniv.	1187		A	Namibia	\$3	TBD	TBD
2009	Romania	Sighisoara Historical Site	5116	S/S	AR	Plan of old town	7.60l	B449	MS6875
2009	Romania	Sighisoara Historical Site	5115a	S/S of 3	AR	View - maybe not a map	1.00l, 1.60l, 6;	B448	MS6875a

Issue Date	Country	Issue	Scott Cat. #	Format (Single Stamp Unless Noted)	Grade	Coverage	Face Value	Michel	SG
2009	Romania	Antarctica	5095		A	Antarctica	8.10l	6249	6952
2009	Romania	Antarctica	5095a	Pair 5094-95	A	Antarctica	1.60l, 8.10l	6348-49	6951-52
2009	Romania	Antarctica	5095b	S/S 5095-96	A	Antarctica	1.60l, 8.10l	B444	MS6953
2009	Romania	Conf. of Police Agencies	5106-07		A	Map of Bucharest goes across both stamps	1l, 1.60l	6360-61	6964-65
2009	Romania	Conf. of Police Agencies	5106a	Pair 5106-07	A	Map of Bucharest goes across both stamps	1l, 1.60l	6360-62	6964-66
2009	Romania	Treasures of Romania	5131a	Part of sheet of 8	AR	Old map in background	3l	6385	MS6990
2009	Russia	Great Novgorod 1150th anniv.	7164	S/S	AR	Plan of town	50r	B126	MS7627
2010	Russia	Peoples' Friendship Univ.	7200		A	World	10r	1624	TBD
2004	Saint Vincent ?	Ft. Durenette	3264A	#718 surcharged	A	St. Vincent	10c on \$3	TBD	TBD
2008	Saint Vincent	Kingstown Credit Union	3635-39	3639 is S/S	A	Outline map of St. Vincent in emblem	10c to \$6	6558-6561, B685	5732-36
2010	Saint Vincent	World Cup Soccer	3688-91	Sheets of 8 + center label	A	Globe on label	\$1.75 each	TBD	MS5805-08
2009	Saudi Arabia	National Day	1403		A	Saudi Arabia	2r	1550	2214
2009	Sierra Leone	Man on the Moon 40th anniv.	2946	S/S of 6	A	World map on plaque on 2946c	2500le each	TBD	MS4661
2009	Singapore	Singapore underground	1375-78		A	Singapore showing map of Circle Line	26c, 80c, \$1.10, \$2	1864-67	1848-51
2009	Singapore	Asia-Pacific Economic Council	1406	Pair with center label	A	World on label	26c, \$2	1898, 1901	1884a
2009	Slovakia	Excavation on Roman Military Camps	579	S/S of 2	AR	Old map showing location of camps	60c each	B32	MS571
2009	Slovenia	Lovrenc Lakes	779		A	Slovenia showing lakes locations	35c	712	836
2009	Slovenia	Lavant Diocese	806		A	Part of Slovenia	92c	742	864
2009	Solomon Islands	Seafaring explores	1134	S/S of 6	AR and OC	Old map and astrolabe on margin	\$10 each	1394	1266
2009	Solomon Islands	Alvaro de Mendana de Neira	1136	S/S	A	World map showing exploration route	\$15	B100	MS1268
2010	Spain	Symbols of nation	3682	Booklet pane of 8	A	Outline of regions on 3682b-d and f-h. Map of Spain on booklet cover	34c each	4467-74	4486-93
2009	Sri Lanka	Relations between Sri Lanka and Cuba	1724		A	Cuba and Sri Lanka	5r	TBD	2014
2009	Thailand	Nat'l Telecommunications Commission	2442		A	Thailand	3b	2836	3004
2009	Thailand	Observation Satellite	2461		A	Asia on globe	3b	2855	TBD
2009	Tunisia	Univ. Declaration of Human Rights 61st anniv.	1474		A	World	1.35d	1727	TBD

Issue Date	Country	Issue	Scott Cat. #	Format (Single Stamp Unless Noted)	Grade	Coverage	Face Value	Michel	SG
2010	Tunisia	Int'l Youth Day	1481		A	Globe with Asia shown	390m	TBD	TBD
2009	Turkey	Ministry of Transportation and Communication	3163		A	Sea chart of Mediterranean (?)	50k	3741	3930
2009	Turkey	Ministry of Transportation and Communication	3166		A	Globe with Africa and Europe	1L	3744	3933
2009	Turkish Republic of Northern Cyprus	Air Traffic Controllers Assoc.	678		A	Cyprus	65k	706	697
2008	United Arab Emirates	Univ. Declaration of Human Rights 60th anniv.	952-53		A	Globe with some detail	1d, 4d	962-63	998-99
2008	United Arab Emirates	Univ. Declaration of Human Rights 60th anniv.	953a	S/S of 2, 952-53	A	Globe with some detail on stamps and margin	1d, 4d	B49	MS1000
2009	United Arab Emirates	Postal Services Cent.	974		A	UAE #3 in background	4f	TBD	TBD
2009	United Arab Emirates	Postal Services Cent.	976	S/S	A	Arabian peninsula on margin	10d	TBD	TBD
2009	Uruguay	Inter-American Development Bank	2280		A	Globe showing South America	37p	TBD	3170
2009	Uzbekistan	Tashkent 2200nd anniv.	579	S/S of 8, 579a-h	A	Map of Tashkent area and Silk Road on 579h and margin	310s-750s	819-26	MS666
2009	Uzbekistan	Great Silk Road	582	S/S	A	Great Silk Road	1250s	TBD	TBD
2009	Venezuela	Venezuelan Independence 200th anniv	1694	S/S of 12, 1694a-l	A	Americas on 1694l	30c-9.50b	4060	TBD
2009	Wallis & Futuna	50th anniv. As French Oversea Territory	679		A	Wallis and Futuna Islands	205fr	1001	TBD
2010	Wallis & Futuna	First doctors in Wallis & Futuna 50th anniv.	680		A	Futuna Island	800fr	TBD	TBD
2009	Yemen	Arab Postal Day	905a		A	World	100r	TBD	TBD
2005	Zambia	Dag Hammarskjöld	1067-68		A	Nice outline map of Zambia	1500k, 2700k	1530-31	969-70
2005	Zambia	Dag Hammarskjöld	1068a	S/S of 2, 1067-68	A	Nice outline map of Zambia	1500k, 2700k	B116	MS971
2010	Zimbabwe	Tourism	1110		A	Africa with Zimbabwe highlighted	\$1	TBD	1296
2010	Zimbabwe	Tourism	1111a	S/S of 4, 1108-11	A	As above	25c, 50c, 75c, \$1	TBD	MS1298

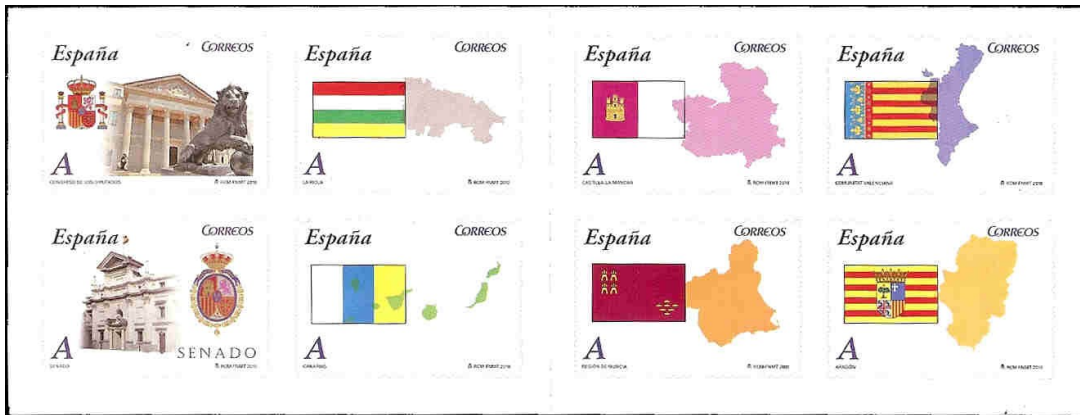
New Issue Illustrations Continued.



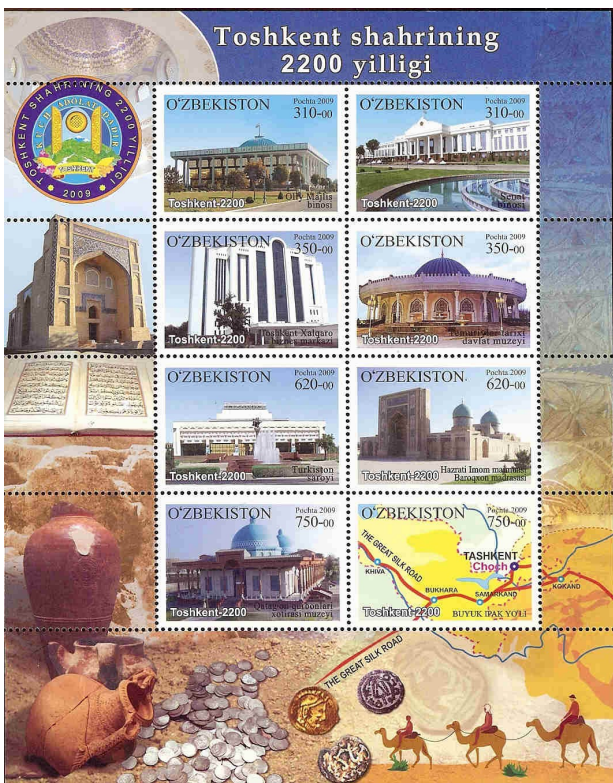
Romania Sc 5116.



New Issue Illustrations Continued.



Spain Sc 3682.



Uzbekistan Sc 579.



Turkey Sc 3163.



United Arab Emirates Sc 976.



Uzbekistan Sc 582.



Collectors of Maps on stamps

Editor: Martin Oakes
2100 Oriole Drive

Freeport, IL 61032, USA

Email: editor@cartophilately.org



ISSN 1930-2053

www.mapsonstamps.com

The CartoPhilatelic Society is a nonprofit philatelic organization with a world-wide membership of collectors of maps on stamps. Founded in 1955, the organization was rejuvenated in 2003. We are associated with the American Philatelic Society and the American Topical Association. Annual dues are US\$18 for residents of North America, and US\$20 for members residing elsewhere for hard copy, and US\$15 for PDF everywhere. You are cordially invited to join us and share our enthusiasm for maps on stamps. A membership application may be found on our website or obtained from the Secretary. Please send your application and dues to the Treasurer.

President & Checklist Editor	David Wolfersberger	768 Chain Ridge Road	St. Louis, MO 63122
Vice President	Mark Honig	Kluiverkamp 28	1541 XZ Koog aan de Zaan, Netherlands
Secretary	Vacant		
Treasurer	Ed Vallery	5 Thompson Lane	Durham, NH 03824-3022
European Rep.	Volker Woesner	Sandkoppel 10	24119 Kronshagen Germany
Webmaster	Reese Plews		rplews@tkb.att.ne.jp

Email addresses may be found on our website.

© 2010 The CartoPhilatelic Society. All rights reserved. Reproduction prohibited without express permission of Editor or Author.

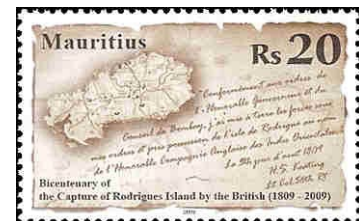
New Issue Illustrations continued.



Slovenia Sc 806.



Russia Sc 7200.



Mauritius Sc 1077



Italy Sc 2960.



Russia Sc 7164.



Romania Sc 5095.