

The New CartoPhilatelist

No. 37 April, 2012

New_CartoPhilatelist_n37_APR_2012.pdf

ISSN 1930-2053

Journal of the CartoPhilatelic Society

©The CartoPhilatelic Society

All Rights Reserved

No Unauthorized Reproduction, Transcription, or Resale

Without The Written Permission of the President,

CartoPhilatelic Society. For Contact Information:

www.mapsonstamps.com

www.cartophilately.org



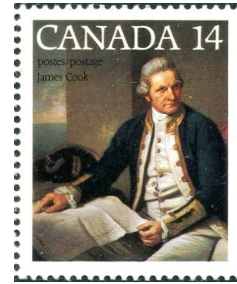
Captain James Cook CartoPhilately: Part I ~ James C. Hamilton.

Captain James Cook (1728-1779) ranks as one of history's greatest navigators because of his three voyages of exploration and science, 1768 to 1779/80. The CartoPhilatelic Society Checklist (version 4.1) identifies approximately 80 Cook related maps on stamps. A 2010 philatelic checklist available through the Captain Cook Society, documents Captain Cook's voyages and achievements on over 700 postage stamps and related philatelic materials, issued by 89 postal administrations.

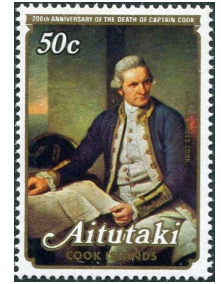
This study of Cook Cartophilately is organized into four parts. The first part introduces Cook, the navigator, explorer, and cartographer. Part II considers cartophilatelic images from Cook's First Voyage, 1768-1771. Part III studies Cook cartophilately illustrating the Second Voyage, 1772-1775, and Part IV concludes Cook maps on stamps focusing on the Third Voyage, 1776-1779/80. Some duplication in design exists in Cook cartophilately. This four part study includes images of 68 Cook cartophilatelic issues.

Part I – Cook's enduring image, legacy, and background.

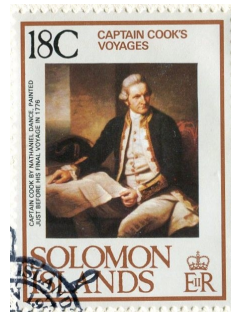
Perhaps the most recognized portrait of Captain Cook was painted by Nathaniel Dance in 1775 after Cook returned from his Second Voyage, a portrait located at the National Maritime Museum, Greenwich. This painting served as the basis for multiple cartophilatelic issues. It depicts Cook seated at a table with maps and other documents, in a formal 18th century setting. Examples of this painting on stamps include Canada 763; Australia 376, 414, 1727d, 1728d; Aitutaki



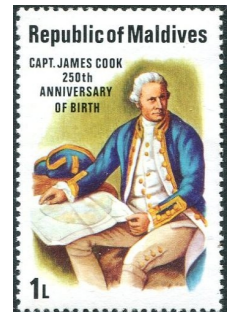
Canada Sc 763.



Aitutaki Sc 171.



Solomon Is. Sc 382.



Maldives Sc 750.

171; Cook Islands 446, 480, 029; and the Solomon Islands 382. Varying designs based on this painting include the examples of French Polynesia C155 and Maldives 750.¹

J. C. Beaglehole, Cook's greatest biographer and editor of the journals, writes that Cook's "memorials" are geography and navigation. Geography is cited because Cook's voyages, equivalent to eight times circumnavigation of Earth, delineated the Pacific Ocean and defined the scope of *Terra Australis Incognita*, the unknown southern continent. Cook concluded that the Southern Continent

(continued on page 2)

Inside this issue:

Captain Cook	1
Early French Aviation	4
At the Auctions	7
Mercator's Projection	8
Cayman Islands	10

Special points of interest:

Society News	3
Elections	11
NY Meeting	11
New Members	12
Dues	12
New Issues	13

(Cook; continued from page 1)



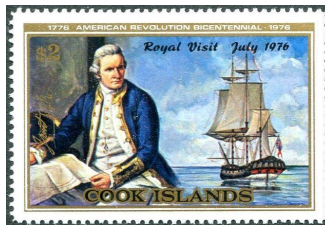
Cover: Australia 1999 FDC, Sc 414, 1727d imperforate, 1728a. Bottom Sc 376 pre-decimal.

did not exist in a navigable sea. Achievements in navigation confirmed the accuracy of the marine chronometer, which Cook termed “our faithful guide in all vicissitudes of climates.” Its use led to improved accurate determination of longitude as well as more accurate maps. Efforts to improve the health of sailors focused on cure and prevention of scurvy, a debilitating disease that occurred on long sea voyages, as well as the ships’ cleanliness.



French Polynesia Sc C155.

The published journals of Cook’s three voyages met an 18th century interest in travel literature, the increasing popular reading by Enlightenment era educated classes. Astronomers and Natural Scientists accompanied Cook’s voyages. Scientific information and artifacts collected during the voyages led to greatly increased categorization of trees, plants and wildlife. Artists, the photographers of the day, provided images of previously unknown areas of the globe. Cook was a master cartographer who produced very accurate maps, some of which served well into the 20th century.²



Cook Islands 446

The Portuguese navigator Ferdinand Magellan crossed from the Atlantic Ocean to the Pacific and carried out the first circumnavigation of the globe 1519-1522. Other explorers followed in his wake, but in the later 18th century, the Pacific, Antarctic, and Arctic Oceans represented areas of the globe still dimly understood or unknown by European navigators and geographers. Seventy years before Cook sailed on the First Voyage, cartographers and geographers routinely depicted a gigantic southern continent at the South Pole. Maps of northern polar regions were in part similarly imaginative. During the three voyages Cook followed written instructions from the British Admiralty regarding the general purpose of his explorations. Cook faithfully followed these directions but he was ultimately responsible for execution of orders, often in oceans about which details were dimly appreciated or unknown by London officials.³

James Cook was the son of a Yorkshire farm laborer. After a short apprenticeship with a Staithes, Yorkshire shopkeeper, Cook’s first seagoing experience

was as a seaman on board ships transporting coal from coalfields north of Whitby, along the Yorkshire North Sea coast to London, unloaded at ports such as Docking in East London. The merchant ships, built in Whitby and termed “Whitby barks,” also transported supplies such as timber from North Sea ports to Whitby’s shipyards.

Cook’s activity in Staithes and Whitby is represented on topographical Norfolk Islands issues, 240-241. The 80c issue depicts the harbor on River Esk, beneath Whitby’s East Cliff and buildings near a waterside home where Cook lived as an apprentice seaman with merchant John Walker’s family. It is now the location of the Captain Cook Memorial Museum. This facility’s orientation room and exhibits contain an array of maps depicting 18th century oceanic knowledge and how Cook’s exploration shaped future understanding. On top of the cliff, the design shows the ruins of the 12th century Whitby Abbey. Its historical roots date to an earlier abbey founded by King Oswiu of Northumbria in 657.



Norfolk Is. 240 (Staithes).



Norfolk Is. Sc 241 (Whitby).

A statue of Cook which is located above the North Sea entrance to Whitby Harbour, is depicted on Samoa 330. Behind Cook’s statue is an outline of the Pacific Ocean on a globe.

Cook joined the Royal Navy in 1755 and saw service in North America during the Seven Year’s War (1756-1763). In particular, he spent nights in a rowboat secretly mapping tides and currents in the St. Lawrence River, providing

(continued on page 3)

(Cook; continued from page 2)



Samoa Sc 330 (Whitbey).



Jersey Sc 191. Cook's map of the Gaspé Peninsula.



Cameroun Sc C271, Siege of Quebec City.

data to enable naval ships to aid General Wolfe's assault on Quebec City (September 1759) which led to the surrender of French Canada to England, formally concluded at the Peace of Paris (1763). Cameroun C271 depicts British ships on the St. Lawrence at Quebec City in a topographical map "Prise de Quebec 1759," the taking of Quebec.

Cook mapped the islands of St. Pierre and Miquelon before they were surrendered to France by the peace treaty. Jersey 191 reproduces Cook's map of the Gaspé Peninsula. Cook also mapped

Newfoundland during summers after the war. By 1767 Cook's navigational and other skills caught the attention of naval authorities in London. The final twelve years of his life were consumed by his three great voyages of exploration and science.

Parts II, III, and IV will appear in subsequent editions of *The New Cartophilist*. ►

Society News

David Wolfersberger

There is a lot of important news relating to the Society. Please take time to read this and take appropriate action.

Modification to Bylaws

Attached are two proposed changes to the Society's Bylaws. The first proposed change is to separate the positions of Secretary and Treasurer. When the Society was reorganized it was anticipated that these positions would be one; however it has become apparent that it would not always be possible for one person to carry out the duties of both. In fact, as I am sure you know, these offices are now separate. The proposed change will allow the positions to be either combined or separated at the discretion of the Officers.

The second change is to add the new elected position of Asia/Pacific/Australia Representative. Currently, in addition to the President, Vice President, Secretary and Treasurer, the members elect a European Representative and Representative at Large. This proposed change will be to elect a member who resides in the Asia/Pacific/Australia area to serve as an officer. Because there are a significant number of members in this area it makes sense to have a representative from this locale. The representative positions are not elected to "represent" their areas, like a United States Senator is elected to represent the citizens of his or her state, but to help obtain a diversity of ideas and insights to help make the Society more responsive and useful to our worldwide membership.

Please take time to review the proposed changes and return your ballot to Marybeth Sulkowski no later than **May 15, 2012**. Please let me know if you have questions or comments about these proposals.

(continued on page 6)

¹ Stamp references in this article use the Scott numbering system. A portion of the Nathaniel Dance portrait, usually featuring Cook's head and shoulders, serves as the design for numerous stamps, as, for example, United States 1732, Rarotonga (Cook Islands) 63, Niue 38, British Antarctic Territory 45, and South Georgia 41. Other portraits of Cook were painted by artists who accompanied the Second Voyage (William Hodges) and Third Voyage (John Webber). The first postage stamp featuring Captain Cook is New South Wales 79 (1888), following a portrait by William Hodges. Examples of Hodges' and Webber's Cook portraits on stamps are found on South Georgia 41 and 930, French Southern & Antarctic Territories 66, British Antarctic Territories 45, and Cook Islands 510.

² J. C. Beaglehole's *Life of Captain James Cook* (Cambridge: 1974) is the standard Cook biography, although there are others as well as specialized Cook studies. J. C. Beaglehole also edited the most recent complete set of Cook's Journals, four volumes plus a portfolio of Cook's maps, (Hakluyt Society, Cambridge: 1961-1968). All citations in this study to Cook's journals are from Beaglehole's edition of the journals, noted by date of entry. Other valuable Cook studies and references are John Gascogne, *Captain James Cook: Voyager Between Worlds* (London: 2007); John Robson, *The Captain Cook Encyclopedia* (London: 2004); John Robson, *Captain Cook's World: Maps of the Life and Voyages of James Cook RN* (Seattle: 2000); Glyn Williams, *The Death of Captain Cook: A Hero Made and Unmade* (London: 2008). See also Allan Villiers, *Captain James Cook* (New York: 1967), written from the perspective of a 20th century Australian navigator. The most recent Cook biography is Frank McLynn, *Captain Cook: Master of the Seas* (New Haven: 2011).

³ Examples of a variety of Captain Cook related stamps are found in James C. Hamilton, "Philatelic Images for Captain James Cook's Journals, *American Philatelist*, Volume 124, Number 3, March 2010, pp. 222-231. St. Pierre & Miquelon 416 is sometimes identified as Cook's map of the islands but it is the work of cartographer Jacques Nicholas Bellin (Paris, 1763).

Early French Aviation History

Roger Kirby

France was in the forefront of aircraft and airship development in the early twentieth century and there is a large literature on European aviation history, describing French pioneering, sporting and commercial developments as well as those of Great Britain and Germany. This short paper does not attempt to summarize the French industry but is a partial account based on map stamps available to illustrate the story. The stamps were all issued by France unless otherwise indicated.

France was naturally suited to the development of commercial air transport services: the country is compact but large enough at the European scale to benefit from internal flights for postal services and passengers. France also had colonies distributed worldwide that could also be served by air or used as refuelling stops to more distant destinations. External flights began a decade later than internal flights as aircraft design and construction progressed. In all cases the commercial air transport services were preceded by pioneering flights, that were always brave, sometimes triumphant but also sometimes tragic.

The earliest and still probably the best known French pioneer aviator was Louis Blériot (1872-1936), most famous for his daring flight on 25 July 1909 across the English Channel, 22 miles (35km) from Calais to Douvres (Dover), a flight that took 37 minutes and rewarded him with a £1,000 prize from a national newspaper and subsequent glory. The 25th anniversary of Blériot's flight was marked by a commemorative French stamp in 1934 (S.G. 523) and the 70th anniversary in 1979 by an issue (Gabon, S.G. 699) from the Republic of Gabon, a former French colony but independent since 1960.



France, S.G. 523



Gabon, S.G. 699

The early aircraft were extremely primitive contraptions. In 1910, the year following Blériot's trans-Channel flight, the Frenchman Henri Rougier (1876-1956) achieved the longest of his so-called endurance flights, across the Mediterranean to Egypt, 40 miles (65km) in the aptly described Voisin 'Boxkite' (Monaco, 1970, S.G. 1001, not a map stamp). As early as 1912 an internal airmail service began in north-east France between Nancy and Lunéville. This was commemorated in 1992 by a stamp contrasting the early Farman HF16 biplane with the contemporary Boeing 737-500 (S.G. 3100, not a map stamp). The following year, commencing 15 October 1913, saw the inauguration of the first postal service flights in northwest France between Villacoublay on the outskirts of Paris and Pauillac via Poitiers. The stamp, issued in 1978 for the 65th anniversary (S.G. 2280), shows the primitive construction of these early aircraft, in this case a Morane-Saulnier Type H. Towards the end of World War I, commencing on 17 August 1918, the first regular postal flight between Paris and St. Nazaire via Le Mans took place using a Letord Lorraine Bomber (S.G. 1800).



France, S.G. 2280



France, S.G. 1800

Within a year, a daily service was inaugurated between Paris and London to become the first daily international air service. From 1919, air transport services started up in many places and countries, mostly limited to short flights carrying small payloads.

Sending mail by air was regarded as an attractive commercial enterprise but, as always, commercial air services were preceded by simple pioneering flights. The first major target was to fly across the North Atlantic with an eye to the trans-Atlantic postal and then passenger markets. In 1919 the first three aerial crossings of the North Atlantic were made, within weeks of each other. A United States Navy flying boat and a British Vickers airplane flew from west to east, using the prevailing westerly winds; the British Military Airship R34 flew directly from Scotland to New York and then made the return flight.

France was well located geographically for the potentially lucrative North Atlantic trade but pioneering flights were required first. In 1927, the Frenchmen Charles Nungesser (1892-1927) and Francois Coli (1881-1927) attempted to make the first non-stop trans-Atlantic flight from Paris to New York in their biplane *L'Oiseau Blanc*. The aircraft took off from Paris on 8 May 1927, was sighted over Ireland and then was never seen again. A memorial stamp showing the pilots and their aircraft was issued by France in 1967 for the 40th anniversary of the mysterious disappearance (S.G. 1750). It may be assumed that the stamp's design would have included a route map rather than clouds if a known route had been followed.



France, S.G. 1750

Two weeks after Nungesser and Coli disappeared, Charles Lindbergh (1902-1974) made his successful solo flight in *Spirit of St. Louis*, flying west to east from New York to Paris. The flight is illustrated by a well-known United States map stamp of 1927.

(Aviation; continued from page 4.)

Not until 1930 did there occur the first successful non-stop trans-Atlantic flight by France. Dieudonné Costes (1892-1973) and Maurice Bellonte (1896-1983) flew from Paris to New York, that is, into the unfavourable headwind conditions, in a Breguet biplane *Point d'Interrogation*. The 50th anniversary of their flight was marked by commemorative stamps by France (S.G. 2376) and by Gabon (Gabon, S.G. 723). The Gabon stamp shows the two aviators and both stamps show the plane, but they are not map stamps.

The overseas aviation interests of France, apart from the North Atlantic, extended also to French colonies in parts of Africa, Indo-China in the Far East and to South America. The French World War I flying ace Maurice Noguès (1889-1934) was responsible after the war in establishing early commercial flights within France and to the Middle East, finally establishing from 1932 a regular weekly service from Marseilles to Saigon (now Ho Chi Minh City, Vietnam). Noguès became the Director of Air France when it was created in 1933 but died in an aircraft crash in France the following year.



France, S.G. 1128

Noguès' flights to Saigon (S.G. 1128) and around Europe were hazardous but could at least rely on land-based refuelling stops. The South Atlantic was an entirely more difficult challenge. Whereas flights from western Europe to New York are some 2,500 miles, the flights to the great cities of South America are much further: over 5,500 miles to Rio de Janeiro and over 6,500 miles to Buenos Aires. Although there were possible refuelling stops on the Atlantic coast, notably Lisbon in Portugal and Dakar in Senegal, this left the substantial South Atlantic stage between Dakar and Natal, the nearest landfall in Brazil.

The pioneering aviation company *Aéropostale* is central to most of the early overseas routes developed by France. Founded in 1917 in Toulouse, France, by Pierre-Georges Latécoère, he envisaged air routes connecting to French overseas territories and specialising in postal services. On Christmas Day 1918, the company began serving its first route between Toulouse and Barcelona in Spain. In 1919 the line was extended to Casablanca and by 1925 to Dakar whence the mail was shipped by steamer to South America. Later in the 1920s, flights were established by *Aéropostale* within South America in Brazil, Argentina, Paraguay, and even across the Andes to Chile. But the trans-Atlantic link came later.

The greater distances required more reliable aircraft and involved a greater fuel-load and increased crew fatigue. The Casablanca-Dakar section was officially opened in 1925 by the French aviator Emile Lécirvain (1897-1929) but he was later killed when his Latécoère 25 monoplane crashed in the desert of Morocco en route from Toulouse. He was commemorated in 1970 by a Senegalese map stamp (Senegal, S.G. 419).



Senegal, S.G. 419

Although the South Atlantic had been successfully crossed in 1922, 1926 and 1927, the flights were all slow involving short stages from island to island by seaplanes. Finally, the first non-stop air crossing of the South Atlantic took place, on 14-15 October 1927 when Dieudonné Costes (1892-1973) and Joseph Le Brix (1899-1931) in a land-based Breguet 19 aircraft made the crossing as part of a multi-stage flight from October 1927 to April 1928 around the world. A map stamp (S.G. 2429) was issued in 1981. Both pilots were devoted to record-breaking flights and Costes later flew across the North Atlantic, as already described; Le Brix was the unlucky one, dying in a plane crash in the Ural Mts. in Russia aged 32.



France, S.G. 2429

The first non-stop commercial flight across the South Atlantic took place on 12-13 May 1930 in a single-engined biplane *Comte de la Vaulx* fitted with floats. *Aéropostale* pilot Jean Mermoz (1901-1936) flew 3,058 km from Dakar to Natal in 21 hours carrying mail. Gabon celebrated the 50th anniversary of this airmail flight in 1980 (Gabon, S.G. 724). Mermoz was a legendary figure of the *Aéropostale* who crossed the South Atlantic regularly between 1930 and 1936 but disappeared at sea on his 24th crossing on 7 December 1936. He is commemorated by two stamps issued in 1937, one of which is a portrait of Mermoz and the South Atlantic route he covered (S.G. 570).



France, S.G. 570

The *Aéropostale* service continued under Air France's management and the service to South America was greatly improved when a new flying boat, the Latécoère 300, was introduced, flying non-stop from the south of France to Dakar in under 24 hours and then across the South Atlantic to Natal and onwards. The map stamp (S.G. 553) issued in 1936 commemorates the 100th flight between France and South America.



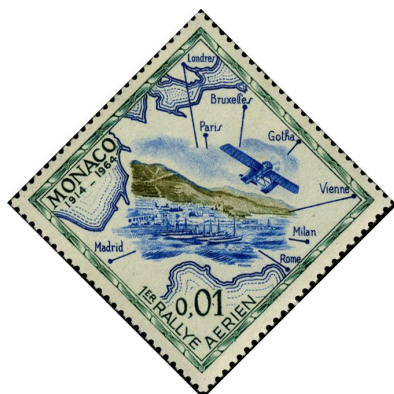
France, S.G. 553

(continued on page 6.)

(Aviation; continued from page 5.)

The dramatic silhouette of the plane dominating the design of the French 1936 stamp emphasises the significance of the Latécoère 300 series of flying boats. This impressive aircraft had 4 engines in tandem pairs and a huge wingspan of 44.3m (145ft). By comparison, Louis Blériot's plane, Blériot XI, had a wingspan of only 7.8m (25.5ft). With a cruising speed of 160 km/h, the Latécoère 300 achieved an international record in 1933 by covering 3,679 km non-stop. The introduction of the Latécoère series of flying boats between France and South America meant that the fast mailboat link was discontinued in 1930. The air service continued using a mixture of flying boats and land planes until World War II.

Reference must be made to the many French pioneer aviators who died young as a result of air accidents. France issued a set of 4 stamps in 1970 commemorating her aviators (S.G. 1890-93), not map



Monaco, S.G. 787

stamps but each picturing two famous aviators. Five of the eight persons illustrated, including both ladies, died while on aerial missions. One Aéropostale pilot who died was Henri Guillaumet (1902-1940) who pioneered flights over the North Atlantic and South Atlantic and survived a crash in 1930 on his 92nd crossing of the Andes in South America only to be shot down in World War II over the Mediterranean. Guillaumet's heroism was commemorated in a 1995 film *Wings of Courage*.

One of the most remarkable flying events in sporting history, demonstrating France's aviation spirit to the full, was the Aerial Rally held in Monte Carlo, Monaco, in 1914. Monaco is a sovereign state but at less than 2 sq. km it is geographically tied to France and shares France's aviation history.

The 1914 Aerial Rally was organised by the International Sporting Club of Monaco and described by the weekly magazine *Flight* (no. 275, 4 April 1914) as "the most important event that has ever been attempted in connection with aviation." Even allowing for hyperbole, it is true that the event did attract world-wide interest. Monaco issued a set of 16 stamps in 1964 (Monaco, S.G. 787-802) to mark the 50th anniversary of the first Aerial Rally. The 1 cent value of this set (Monaco, S.G. 787) is a map stamp that reproduced the 1914 design of the rally postcard. The other values of the set describe many of the famous aircraft, pilots and flights described earlier in this article. The Monaco set therefore provides a fitting conclusion to this selective summary of French aviation history. ■

References:

Aéropostale (aviation)

[http://en.wikipedia.org/wiki/Aeropostale_\(aviation\)](http://en.wikipedia.org/wiki/Aeropostale_(aviation))

Latécoère 300 Series Flying Boats

http://www.aviastar.org/air/france/latecoere_1-300.php

Latécoère company history

http://www.latecoere.fr/content/en/About_us/History

The Toulouse to Dakar route.

<http://www.saintexupery2011.fr/en/the-airmail/the-toulouse-to-dakar-route.html>

Transatlantic flight history

http://en.wikipedia.org/wiki/Transatlantic_flight

(Society News, continued from page 3.)

Financial Summary

Treasurer Ed Vallery has presented the most recent summary of our financial situation:

Beginning Balance (9/7/11)		\$4190.51
Gross Income to 3/5/12	2732.00	
PayPal fees	-38.09	
Other expenses to 3/5/12	<u>-1253.51</u>	
Net Income		\$1440.40
Balance 3/5/12		\$5630.91

Comments:

1. Income includes dues, sales of Checklist and sales of *America on the Map*. Also included are contributions made to the Society by several members.
2. Expenses are primarily for printing and mailing *The New CartoPhilatelist* but also include duplication costs for the Checklist, mailing costs for the Checklist and *America on the Map* plus other mailing and office expenses.
3. There are some expenses yet to be paid so when the fiscal year (ends 3/31/12) data is assembled the net income and balance will be slightly lower.

(continued on page 11.)

At the Auctions ~ Miklos Pinther



One of the fascinating aspects of stamp collecting is the almost non-stop streaming of discoveries, ranging from trivial to consequential, often unfolding at unexpected moments. Such was the case at a recent auction in Halifax, Nova Scotia. On October 21st, 2011, Eastern Auctions Ltd. offered to the public the Hugh Westgate 1898 Map Stamp Collection.

Certainly for cartophilatelists the 1898 2¢ Canadian Xmas issue (Sc 85) has to be one of the most iconic map stamps. It was among the first ever issued, a beautiful “all-over-map” stamp. It remains an accessible classic stamp since nearly 20 million copies were printed. It is also one of the most written about stamps. Our former member Whitney L. Bradley spent nearly his entire collecting life researching it, which resulted in his remarkable plating study published in 1989.

So, just as you thought you saw everything, you knew about this issue, along comes the “truly spectacular” collection of Dr. Westgate. As noted in the auction catalogue, it contained “the entire production file from the American Bank Note Company Archives” including “many key items that have been unavailable for decades.” Offered for sale were various die proofs, essays, several printing stages, large selection of cancellations, and extensive postal history material, altogether 155 lots. Some of this material has appeared in three Gold Medal exhibits by Dr. Westgate. The collection realized CDN\$190,049.00 including 15% commission.

From a cartophilatelic perspective lot 203 was a fascinating item, the original map used as model for the stamp. Entitled “Commercial & Strategic Chart of

the British Empire,” it was prepared by the famous John Bartholomew & Co. On it the territories of the British Empire are shown in three shades of red, indicating levels of potential commercial development. The equatorial scale of the map is approximately 1:100,000,000. It measures 18 x 12 inches, and it is mounted on linen. Similar versions of this map appeared in various edition of *The Times Atlas* for several decades. The lot realized \$747.50.

The small spiral bound auction catalogue contains excellent descriptions and images that could serve as a useful reference guide. For availability, interested members may wish to write to Eastern Auctions Ltd., P.O. Box 250, Bathurst, New Brunswick, E2A 3Z2, Canada. (We would like to express our appreciation to Bill Burden of Eastern Auctions Ltd. for his assistance and permission to reproduce lot 203.) ■

Mercator's Projection

Volker Woesner

Gerardus Mercator (Fig. 2, 3) is without any doubt the most famous cartographer. His cylindrical conformal projection is both in standard (Fig.1) and transversal version the most used projection of today.



Fig. 1 GDR Sc 751 - Mercator's projection with lines of latitude and longitude.

This year is Mercator's 500th birthday and the German Post honors him by issuing a stamp (Fig.2).



Fig. 2 Mercator with his projection. (No cat.)

50 years ago Belgium issued a stamp commemorating his 450th birthday (Fig.3).

Gerardus Mercator was born 1512 as Gerhard de Cremer in Rupelmonde, Flanders and died 1594 in Duisburg, Germany.



Fig. 3 Belgium Sc 579 - Mercator.

He studied in Louvain, Belgium. After that he became a maker of maps (Fig.4) and globes and worked as a land surveyor.

In 1552 he moved to Duisburg, Germany and became court cosmographer in 1564. Mercator published his cylindrical conformal projection in 1569 (Fig.1).

A map projection is the method of representing the curved lines of latitude and longitude from the spheroid shape of the earth onto a flat sheet of paper. This network of lines is called a graticule.



Fig. 4 S. Africa (Bophuthatswana) Sc 297 - A map from Mercator's Atlas, 1595.

Unfortunately it is impossible to represent the curved surface of the globe on a flat map without distortions.

Each projection achieves accuracy in one respect only, while creating distortions in others.

To illustrate the principle of a cylindrical projection consider a sheet of paper wrapped around the globe like a cylinder touching the globe only on the equator. All lines of latitude and longitude are projected from the centre to the cylinder (Fig. 2). This system represents meridians (longitudes) by parallel lines and parallels of latitude by straight lines (Fig.1).



Fig. 5 New Zealand Sc 237 - Mercator's projection.

The lines that form the graticule intersect each other at right angles (Fig.1, 5, 7, 11). The distances between longitudes and latitudes are always equal.

The advantage of Mercator's projection is that all bearings on the globe are equal to bearings on the map, mostly with magnetic north as zero.

The base lines, the meridians, point north, and degrees are measured clockwise from the base lines.

This enables navigators to steer a course along straight lines from departure harbor to destination harbor cutting all meridians at the same angle. Such line of constant direction is a rhumb line (loxodrome). The disadvantage of Mercator's projection is that distances and the size and shape of large areas are greatly distorted e.g. Greenland. Only in a small zone next to the equator are there no distortions.



Fig. 6 Portugal Sc 1399 - Loxodrome of Pedro Nunes.

Until 1569 a lot of projections were developed and constructed. Among those was a cylindrical conformal projection (Fig. 6). The Portuguese Pedro Nunes (1502-1578) considered this projection, but could not make the necessary calculations.



Fig. 8 Germany Sc 2306 - Transverse projection, large scale.

The most important use of Mercator's projection today is the transverse version; used by the military (NATO), geodesists, land surveyors and mapping agencies for cartography all over the world.

(continued on page 9.)

(Mercator; continued from page 8.)

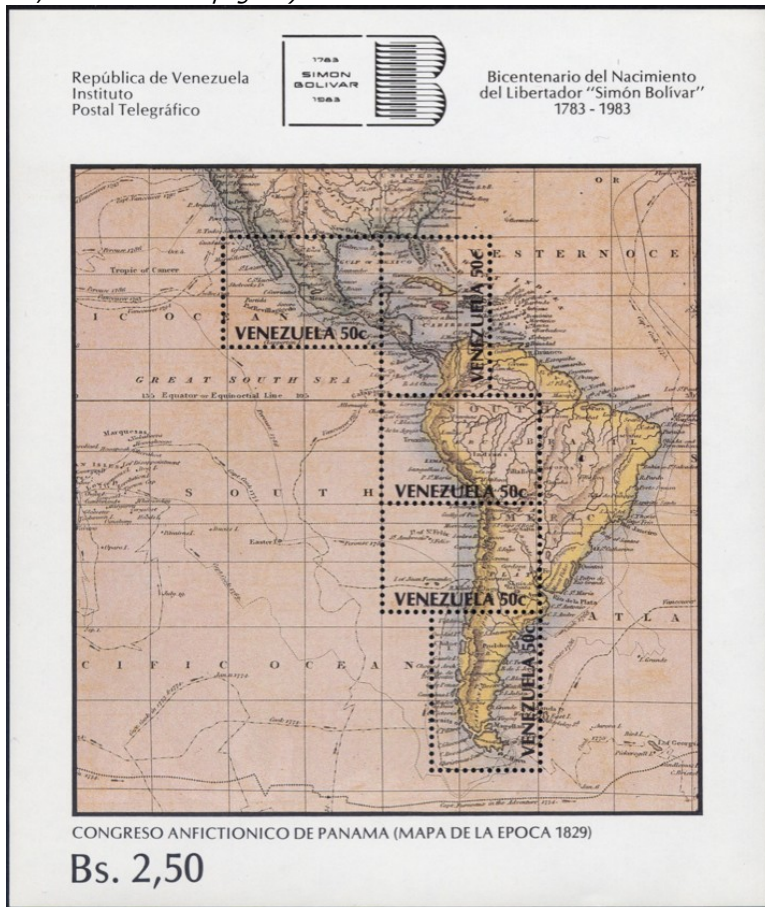


Fig. 7 Venezuela Sc 1322 - Chart of the World, showing graticule.

The transverse system was first used by the German C.F. Gauß (1777-1855) and introduced by J. Krueger to the Prussian Mapping Agency. The System was used in Germany (Fig. 8) and is in use today. In member states of the European Union it will be replaced gradually by the "Universal Transverse Mercator System" (UTM¹).

UTM grid systems divide the globe into 60 zones, each 6 degrees of longitude wide with a central meridian each.

In these narrow zones (6° = ca. 400km in Germany) the transverse Mercator projection is very accurate and nearly correct in every respect.



Fig. 9 Sc 1395 - Ordnance survey Map (UTM Projection).

Many countries use the UTM for their maps, e.g. Austria, Great Britain, Germany, etc.

The identification of Mercator's projection on stamps is not easy as there are many different cylindrical projections that are not conformal (Fig 10). One option is to have a look at the size of Greenland. If it is too big (Fig.12) or if there are one or both poles on the stamp it is not the right projection. Commonly depicted on stamps is the cylindrical equidistant projection (Platt-projection, Fig.10).

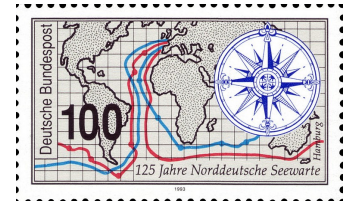


Fig. 10 GDR Sc 1772 - Platt projection.

The most famous stamp with Mercator's Projection is the first Christmas stamp XMAS 1898 from Canada (Fig. 11). ■



Fig. 11 Canada Sc 85 - Mercator's projection.

In Germany UTM will be used as a coordinate reference system related to the ETRS89 datum².

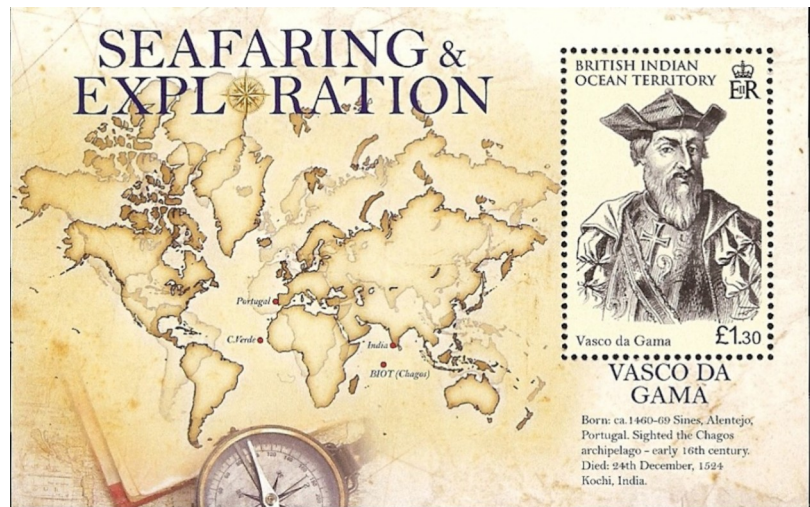


Fig. 12 BIOT. Sc 371 - Another Mercator projection.

References:

Kirby, Roger in TNCP No.20 and Woesner, Volker in German Circular No.99

¹ For further explanation of UTM see <http://www.dmap.co.uk/utmworld.htm>

² ETRS89 Datum will be described in a future edition of TNCP.

Cayman Islands ~ Tom Tarabicos

Taking a stroll down the famous Seven Mile Beach has always been a wonderful experience. Swimming in the finest water in the Caribbean never gets old. Being able to drive around the complete island in 2 hours is convenient. Barely visible on the map, this tiny island nestled southwest of Cuba is one of the busiest vacation destinations in the Caribbean. There are three islands which comprise the Cayman Islands. Cayman issued a wonderful stamp featuring King George V imposed over a map of the Caymans, Scott #85. (Fig. 1) A similar issued features King George VI on a map of the Cayman Islands, Scott #105 (Fig. 2) A British Overseas Territory, the island is a haven for scuba diving, swimming and banking.



Fig 1 Cayman Is. Sc 85.



Fig. 2 Cayman Is. Sc105.

In 1503 the Cayman Islands were gazed upon by the famous explorer Christopher Columbus. The islands were covered by sea turtles thus prompting Columbus to name them Las Tortugas. Later in the century another famous explorer, Sir Francis Drake visited the islands. After observing many alligator, the caiman, he changed the name of the islands to the Cayman Islands. The islands remained lightly visited for many years due to the lack of accessibility. A rarity in the Caribbean, the island is flat and small.

The Cayman Islands are comprised of three islands. The first is Grand Cayman and is the location of the capital, Georgetown. The next is Cayman Brac which has the highest elevation of a few hundred feet and the third, Little Cayman.



Fig. 3 Cayman Is. Sc 130.

The capital of Georgetown (Fig. 3), featured on Scott #130 provides a small but safe harbor which handles an incredible amount of cruise ships stopping off for a visit. Grand Cayman has over 500 bank branches on the island providing a tax haven for corporations and wealthy individuals from around the world. It is a center, along with the Bahamas for the re-insurance industry. (Fig. 4) Tourism is its main industry drawing people from Europe, The United States and the Far East.

The Cayman Islands historically have been a tax-exempt destination. On 8 February 1794, the Caymanians rescued the crews of a group of ten merchant ships, including HMS *Convert*, an incident that has since become known as the Wreck of the Ten Sail. The ships had struck a reef and run aground during rough seas. Legend has it that King George III rewarded the island with a promise never to introduce taxes as compensation for their generosity as one of the ships carried a member of the King's own family, his son Prince Wil-

liam. While this remains a popular legend, Queen Elizabeth II herself, along with various history books, state the story is not true.¹ The 200th anniversary of the wreck was commemorated in 1994 when Cayman issued a set of 5 stamps, Scott 688-692. (Fig. 5)

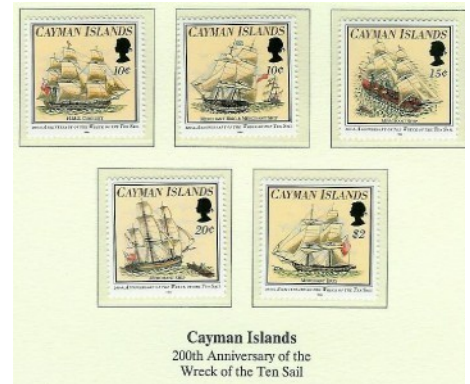


Fig 5 Cayman Is., Sc 688-692
Wreck of the Ten Sail.

The Caymans were a dependency of Jamaica until 1962. Now they are a separately run British Colony. Many of the early stamps were Jamaican until 1900 when they issued their first stamp, a portrait of Queen Victoria. Many of the issues depict scenes from the islands. Tourism is featured on many of its stamps. The Cayman Islands have always had a conservative issuing policy making collecting stamps from there within most collectors' budget. As of last year, the Cayman Island Post has issued a total over just over a thousand stamps. Other than definitives and commemoratives, the only other issues are 5

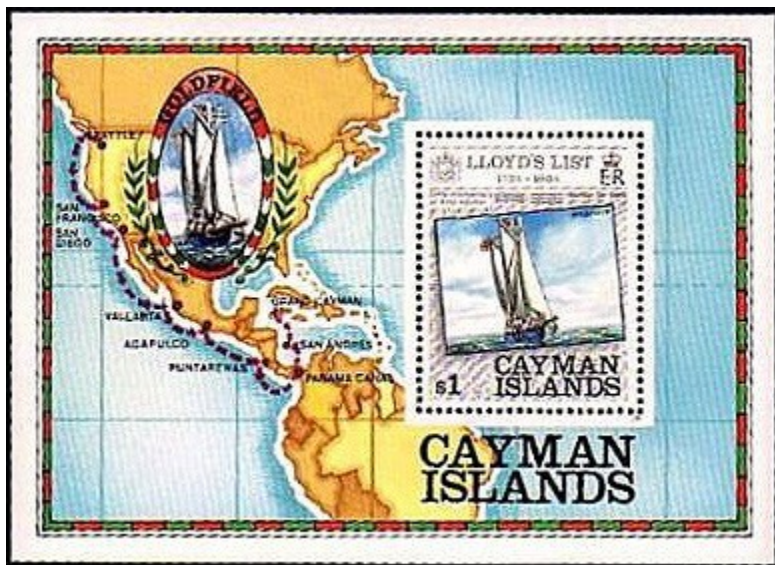


Fig 4 Cayman Is., Re-Insurance Sc 526.

(continued on page 11.)

(Cayman; continued from page 10.)

War Tax Stamps issued during World War I. The most expensive stamp issued by the Cayman Islands was in 1917. It was the War Stamp, Scott MR#3, featuring a portrait of King George V.

Lost treasure has always been a draw for those seeking riches. Many gold coins have been excavated from the sea bottom due to the many ship wrecks surrounding the islands. Cayman in 1973 issued a souvenir sheet (Fig. 6), Scott #309A commemorating the First Cayman Islands coinage and Bank Notes. Scuba diving for either riches in gold or in the riches of seal life keeps attracting large crowds yearly.

Whether your visit is historical, business or pleasure the Cayman Islands will satisfy your desires. The people are friendly; crime is non-existent and the beauty matchless. Getting around Grand Cayman is easy, whether you're headed to the golf course, visiting the Turtle Farm or visiting beautiful Rum Point to spend the day. A visit to the Caymans is a real treat. If time permits, visit the only stamp shop on the islands located in the heart of Georgetown. ■



Fig. 6 Cayman Is. Sc 309A commemorating the First Cayman Islands coinage.

Reference:

¹ http://en.wikipedia.org/wiki/Special:Search/Cayman_Islands/stamps

(Society News; continued from page 6.)

Elections

Elections for all of the Society's officers will take place next January. If any members are interested in serving as an officer, please let me know. The official call for nominations will be in the October 2012 issue of *The New CartoPhilatelist* and ballots in the January 2013 issue.

Meeting in New York City

As announced several months ago the Society will meet in New York City during the American Stamp Dealers' National Postage Stamp Show, October 11-14, 2012. Our meeting will take place at The Collectors Club, 22 East 35th Street, New York, NY at 3:00 pm on Friday, October 12. A draft agenda follows:

1. State of the Society – Wolfersberger
2. Status of Scanning Project – Honig
3. Checklist (again!) – changes in grade (Wolfersberger)
4. Indexing Project – Woesner
5. Dues discussion – Vallery
6. *The New CartoPhilatelist* – Oakes
7. Website – Plews
8. Discussion of exhibiting - Oakes
9. Presentations by members of any material of interest.

The meeting room at The Collectors Club that we will use has exhibit space for twenty 16-page frames and facility for Power-Point presentations. I encourage those planning to attend to make use of these excellent facilities by making a presentation on a cartophilatelic topic, perhaps sharing an exhibit or a presentation on some map stamp topic.

A dinner with members and guests is being planned for Friday or Saturday evening, with each member and guest paying their own costs. Details will be provided as soon as possible.

The show hotel is the New Yorker Hotel, 481 Eighth Ave., New York NY. Special room rates will be available at that hotel also. For reference the hotel rates for the Spring 2012 meeting are \$215/night. However, Miklos reports that the New Yorker is not in the best condition. We are working on finding some alternates in the area that are still close to the show and The Collectors Club and will let you know promptly.

Please let me know if you plan to attend and if you would like to make a presentation during our business meeting. Also comments regarding the Agenda are encouraged.

(continued on page 12.)

(Society News; continued from page 11.)

National Topical Stamp Show

I will be at the American Topical Association National Topical Stamp Show (NTSS) to be held this year in Lancaster, PA, June 22-24. If you plan to attend, please let me know so we can meet. The Wine on Stamps Study Unit will be holding a formal meeting (really more of a wine tasting!) and you are invited to attend as my guest. Information on the NTSS can be found at

<http://americantopicalassn.org/ntss.shtml>,

or contact me and I will send the information. The NTSS is always a great show with lots of topical exhibits and dealers.

New Members

Please welcome the following new members:

Ran Barash – Israel
LCDR John Brown – Plaquemines, LA
Wallace Craig – Fullerton, CA
Harry Ellis – Chicago, IL
Carlos Fernandez – Houston, TX
Kevin Hadlock – Orange, CT
Fred Levantrosser – Dearborn, MI
Jay Osmann – Landisburg, PA
William Robinson – York, PA
Mary Roser – Berea, OH
Alvaro Sanchez – Figtree, NSW, Australia

Several of the new members were “recruited” via letters that Marybeth and I sent to American Topical Association members who expressed interest in maps on stamps; several others found us via our excellent website. We now have 115 members. If you know of others who have an interest in maps on stamps, please encourage them to investigate the CartoPhilatelic Society. I will be happy to provide information if you will send their name to me.

DUES!

Everyone should have received a dues reminder. Dues are payable by March 31, 2012. If you have not renewed, please forward your dues promptly to Ed Vallery (address on back cover).

Also remember that dues can be submitted by PayPal to :

mapsonstamps@aol.com.

All dues must be paid no later than July 1, 2012.

We are most grateful that several members have made monetary donations above the dues amount – thanks to all who have done so. We plan to use this money to help get Occasional Publication #2 underway. OP #2 will be a reprint of all of Walter Klinefelter’s articles that were not previously published in his series of books. No timeline for publication has yet been established.

New Maps on Stamps Category

Pierre Moise has found a new category of maps on stamps, variously referred to as ATM (automatic teller machine – US usage); Automatenmarken (German usage); or Machine postage labels (Great Britain). A couple of examples are shown (copies from the Yvert et Tellier stamp catalogue). These stamps are listed in the Y/T and Michel catalogues, but not in Scott or the SG Stamps of the World (maybe in the specialized catalogues?).

I solicit a volunteer to review the Y/T and/or Michel catalogues to compile a list of ATM map stamps to be added to the Checklist. I am not familiar with collecting ATM stamps but I believe they might be difficult to find unused. They will make a fun and interesting addition to a map on stamps collection.

CartoPhilately in the News

Mark Honig found an article in the February 13, 2012 edition of *Linn’s Stamp News* that reported a planned joint issue between Israel and Gibraltar was cancelled by Gibraltar because it depicted the King David Citadel. The Citadel is in the disputed area of east Jerusalem and British authorities were concerned that issuing the stamp might indicate approval of the current occupation by Israel. (Note: The CPS, its officers and Editor are not taking any position on the sensitive issues regarding Jerusalem. This is just a report of the situation as it occurred.) The planned

stamp would have been a good map stamp as it featured a nice map of the Mediterranean Sea.

Another article in the same issue of *Linn’s* by Janet Klug is “Geographic Journeys Through Different Worldwide Stamps.” It is an interesting discussion about how collecting stamps increases a collector’s knowledge of world geography, something that we as map stamp collectors know well. The article also has images of two map stamps.

Other recent issues of *Linn’s Stamp News* contained articles that featured map stamps. In the December 26, 2011 issue in the article “‘Washington’ Slept Here’ – surprisingly enough, in Barbados,” the author, David A. Norris, discusses the visit to Barbados by the future first president of the United States, George Washington. Included in the article are two map stamps: Barbados Sc 440 (map of South Carolina) and Barbados Sc 441 (part of Barbados with Washington indicating the location where he stayed).

The January 2, 2012 issue has two articles with map stamps. The first, by Michael Rogers is about a set of Chinese (Taiwan) stamps issued in honor of the 150th anniversary of the US Constitution (Sc 364-67). Sc 366, which has a map of China, is illustrated in the article as is an image of a proof of the stamp. Another article (written by Denise McCarty) discusses “Western Samoa’s Lost Day,” when on December 30, 2011 this country moved across the International Date Line, essentially losing an entire day. This event was commemorated by three stamps, pictured in the article, all of which contain maps of the area.

Miklos Pinther’s article “Notes on Map Cancellations (Part 1)” first published in the October, 2011 issue of *The New CartoPhilatelist* was reprinted in the January-February 2012 issue of *The Dispatcher*, the journal of the Casey Jones Railroad Unit – ATA.

Miklos also brought to my attention a series of articles by James Hamilton entitled “An Atlas of Vatican City Car-

(continued on page 13.)

(Society News; continued from page 12.)

tophilately,” published in *Vatican Notes*, the quarterly journal of the Vatican Philatelic Society. Mr. Hamilton, also a member of the CartoPhilatelic Society, has graciously agreed to make the three articles available on our website. These articles are a great in-depth look at the cartophilately of Vatican City.

New Issues

Normally new issues are not listed in the Checklist update that is included with each issue, until they are listed in Scott's. However, there are a number of very nice issues that either have been recently issued or will be shortly. These are noted below. (Thanks to Mark Honig and Volker Woesner for bringing these to my attention.)

Belgium: S/S of two with images of Mercator and Hondius. Commemorates the 500th anniversary of Mercator's birth and 400th anniversary of Hondius' death. The sheet features Hondius' 1606 world map. This is a very nice souvenir sheet.

Germany issued a €2.20 stamp to honor Mercator. See Volker Woesner's article in this issue.

Australia: Set of 5 "City Transport." Issued in a sheet of 10, 2 each of each stamp with a nice outline of the each province on the gutter between the stamps. Also issued was a set "Then and Now." One stamp features a GPS and a road atlas on the gutter.

Canada: Queen Elizabeth Diamond Jubilee. S/S of 4 with 1855 map of Canada in background. Also to be issued is a set of 5 stamps in various formats commemorating the 100th anniversary of the Titanic disaster. Four of the stamps (1st class permanent) are in a block and together form an image of the Titanic from the bow. A map of the North Atlantic is on the upper two stamps. Also issued is a souvenir sheet of one (\$1.80) with a map of the North Atlantic on the margin showing the ship's route. Booklets and postal cards will also be issued in various denominations.

Slovenia: 70th anniversary blockade of Ljubljana by Italy in 1942. Excellent city map on this S/S.

Austria: Three stamp labels for parcels of different sizes. Each has a nice map of Austria. An interesting story about these labels: I have a friend who lives in Vienna so I asked him to go the post office and buy the lowest value (€4.60). He found out that these are available only on-line and not at the post office. To buy on-line and ship to the US would add €14.95 in shipping costs so I don't think I'll be adding this to my collection! Perhaps in time the issues might be available from dealers at a more reasonable cost.

Images of all stamps are available at the respective countries postal authority website. There are several websites that list worldwide postal authorities but many are not up-to-date. One that seems fairly current is <http://www.cybercity-online.net/Postalauthorities.html>.

There are a couple of older issues that have just been listed in Scott's. In 2007 and 2008 St. Vincent issued some stamps (Sc 3566A to F) that were referred to as "skeleton stamps," that is stamps without denominations. They were then overprinted with either 10c or 30c for local postage. The design of the stamps is the same as Scott 515-17 but in different colors. After some period of use leftovers were withdrawn. There are probably very few of these available to collectors. Scott and Michel list these stamps with no catalogue value indicating a market value has not been established. An example, from the website "St. Vincent Stamps & Philatelic Reference" is shown nearby.

Three stamps issued by Gabon in 1993 and 1994 have been listed by Scott. These stamps (Sc 792a, 793a and 794) have the same excellent provinces map as on the previously listed Sc 791-97. While a low catalogue value, these stamps are difficult to find.

There are a number of interesting new issues noted in the Checklist Update. Argentina issued stamps (Sc 2615-17) to commemorate Copa América 2011.

Copa América is a soccer tournament held periodically between the national teams of the all South American countries, with invitations being made to other countries. The stamps were issued in three sets of two. Each of the two stamps was attached round fiber board dial; each dial represented the three groups of teams that comprised the tournament. The upper dial turns and brings into view the opposing teams in the opening round matches with information displayed about the teams and their results in previous Copa tournaments. At the bottom of the wheel is a world map with the teams in the group highlighted. I mention this as much for the unique character of this issue as for the maps.

Staying with the Latin American theme, Israel issued a sheet of 12 stamps + 12 labels for the 200th anniversary of the independence of five countries – Mexico, Ecuador, Chile, Colombia, and Argentina. On the margin of the sheet is an excellent map of the area with these five countries highlighted and identified. The central label also contains a map with the flags of the nations shown.

Bulgaria issued three excellent map stamps. To commemorate the 145th anniversary of the first railroad in Bulgaria, a souvenir sheet of 3 + a label (Sc 4580) was issued. The railroad was completed in 1866 and went from Ruse to Varna, a distance of 223 km. Two of the stamps on the sheet show the initial equipment on the line, while the third has picture of William Gladstone, a prominent British politician and 4 times Prime Minister. He also managed the company that built this line. The label has a map of the route, identifying the termini and outlining several Bulgarian provinces.

The second stamp from Bulgaria is a sheet of 2 each Sc 4581-82 issued to note Bulgaria's first participation in the Dakar Rally. Begun in 1978, the Dakar Rally (or Paris – Dakar Rally) was an off road rally that began in Paris and ended in Dakar, Senegal. Over the years different starting locations were used, but until 2009 the end was almost always in Dakar. In 2009 because of security and other concerns the rally was moved to South America, where it has been held since. Sc 4592 shows the route through Argentina and Chile, begin-

(continued on page 14.)

(Society News; continued from page 13.)

ning and ending in Buenos Aires, a distance of almost 6000 km (3600 mi).

There are four classes in the Rally – cars, motorcycles, trucks, and all terrain vehicles (ATV). For the first time in 2011 a Bulgarian raced in the Dakar Rally, with Petar Tsenkov and Todor Hristov driving an ATV, presumably shown on Sc 4581. Despite suffering crashes and injuries, the Bulgarian team finished 11th (with 33 entrants) in the class.

The last Bulgarian sheet to be discussed (Sc 4583) is for the International Black Sea Action Day (October 31, 2011). This was issued on the 20th anniversary of the Black Sea Commission, founded by the six countries surrounding the Black Sea to reduce the impact of pollution and help to rehabilitate the sea. The sheet of two has a map of the Black Sea and the areas around it with all six countries identified. As far as I can determine Bulgaria is the only country to issue a stamp for this event.

Romania issued another set of stamps relating to locations along the Danube (Sc 5208-12; see Sc 5168-72 for previous issues). The souvenir sheet (Sc 5211a) has four stamps (5208-11) each picturing historic buildings in various countries that are on the Danube. Each stamp shows a map locating the building and the coat of arms of the country in which it is located. On the margin of the sheet is a part of an old map of the area.

Dominica (Sc 2761) and Guyana (Sc 4073) issued souvenir sheets for the 10th Cricket World Cup, held in India, Sri Lanka and Bangladesh last year. The sheets, identical except for the country name and denomination on the stamps features a nice map of the host countries with all of the cities hosting match shown identified. The flags of the participating countries are also on the sheet.

Denmark issued a sheet (Sc 1557a) for the 2011 UCI World Road Championship bicycle race, an event that has been held almost every year since 1927. The

2011 event was held in Copenhagen. The sheet consists of six stamps showing a bicycle racer. On the margin is the route of the race with several local features shown. This sheet is similar to the 2010 Denmark sheet for the Post Danmark Rundt Bike Race which also had a map of the race route.

Two stamps (Sc 955a-b) were issued by Azerbaijan on the 90th anniversary of the Treaty of Kars. This treaty, between Russia and Turkey, established the boundaries between several countries in the region including Georgia, Azerbaijan, and Armenia. Sc 955b is a 1921 map showing the boundaries as created. The map on the stamp is small and hard to read; a much more readable map of the borders created by the Treaty can be found at :

<http://www.conflicts.rem33.com/images/Armenia/kars.htm>.

More stamps about the Antarctica and the South Pole have been issued. Norway issued a set (Sc 1643-43) commemorating Roald Amundsen's feat of leading the expedition that was the first to reach the South Pole. The second stamp of the set (Sc 1643) has a map of the route taken. Unfortunately the map is very hard to see. It would have been better had Amundsen's home country produced a stamp with a clearer map.

New Zealand's Ross Dependency issued five stamps and a souvenir sheet (Sc L119-123a) "Race to the Pole." This set features images of the two expeditions that were trying to reach the South Pole first. Each stamp on the set (the same stamps are on the souvenir sheet) has an outline of Antarctica; one also has the notations "Amundsen 14.12.1911" and "Scott 17.1.1912," the dates each expedition reached the target.

A similar map is also on the margin of the sheet which also has the routes taken.

Australia Antarctic Territory issued a souvenir sheet five (Sc L159) but this time in commemoration the centenary of the Australian Antarctic Expedition of 1911-14. The expedition, led by Douglas Mawson, sailed from Australia and established three bases in Antarctica at which scientific and meteorological observations were made and explorations were conducted. A very nice map of the route of the exploration is on the margin of the sheet; two of the stamps have small maps.

I will now discuss a couple of issues that some might not consider map stamps. A souvenir sheet was issued by Bulgaria (Sc 4571) on the 1700th anniversary of the Edict of Serdica (or the Edict of Toleration) issued by the Roman Emperor Galerius on April 30, 311, just days before his death. Galerius was very anti-Christian and fought Christians frequently with the goal of eradicating all Christians. Apparently in his last days he realized the futility of this effort and the Edict was issued to officially end the persecution of Christians. The Edict of Toleration was followed a few years later with the Edict of Milan that recognized Christianity in the Roman Empire. The sheet features nice view of Serdica (the Roman name for the town at the time, now Sofia).

Bosnia & Herzegovina (Croat government) issued a stamp (Sc 250) for the Christian Basilica Cim located in Mostar, Bosnia & Herzegovina. The Basilica was built about 6 AD; all that remain now is the lower part of the walls, as shown in the layout featured on the stamp. Much archaeological exploration of the site has taken place resulting in the discovery of many historic items. ■

New Issue Illustrations.



Azerbaijan 955.



Germany 2638.

MAPS ON STAMPS CHECKLIST NEW ISSUES UPDATE
Linn's Dec 2011 - Feb 2012 Special Edition Updates
Grade O not included but will be on the next Checklist update.

Issue Date	Country	Issue	Scott Cat. #	Format (Single Stamp Unless Noted)	Grade	Coverage	Face Value	Michel	SG
2011	Albania	Europa Year of the Forest	2907-08	Also issued in a S/S same design as sin-	A	Europe	200l	3366, B180	3.12
2011	Antigua	Civil War	3134	S/S of 4, 31341-d	A	Battle Map on 3134a	\$2.50 each	4875	3.12
2011	Antigua	First Man in Space, 50th anniv.	3158a	S/S of 4, 3158a-d	A	Map of Gagrins flight path on globe	\$2.75 each	2.12	3.12
2010	Argentina	Portugal 2011 Philatelic Exhib. - lighthouse	2599	S/S of 2	A	Nautical map on stamp and margin, compass rose on	2x\$5	2.12	MS3438
2010	Argentina	World Post Day	2601		A	World map	\$1.50	2.12	3440
2011	Argentina	America Cup Soccer	2615-17	Sheets of 2 stamps each. Stamp attached to wheel at center.	A	World map on each wheel.	Each 2x\$5	2.12	3.12
2011	Armenia	Communications Regional Commonwealth 20th anniv.	876	S/S	A	Globe on stamp and margin with Europe shown	200d	B41	3.12
2011	Australian Antarctic Territory	Australasian Antarctic Exped. Cent.	L159	Strip of 5, L159a-e	A	Part of map of Antarctica on 159a and	5x60c	195-99	207-11
2011	Australian Antarctic Territory	Australasian Antarctic Exped. Cent.	L159f	S/S of 5 (L159a-e)	A	Part of map of Antarctica on 159a and e. Expedition route on margin.	5x60c	B7	MS212
2011	Austria	Year of the Forest	2336	S/S	A	Appears to be leaf in the form of a topographic map of	170c	B67	MS3112
2011	Azerbaijan	Treaty of Kars	955b		A	Excellent 1921 map of Azerbaijan and surrounding coun-	60q	854	799
2011	Bangladesh	Probashi Kallyan Bank	783		A	Globe	10t	1041	3.12
2011	Bhutan	Diplomatic Relations between Japan and	1462	S/S of 4, 1462a-d	A	Japan and Bhutan on margin	4x20nu	2627-30	3.12
2011	Bosnia & Herzegovina (Croat)	World Meteorological Day	246		A	Weather map	20pf	309	C310
2011	Bosnia & Herzegovina	Christian Basilica, Cim	250		A	Layout of church	1.50m	314	C315
2011	Bosnia Herzegovina (Serb)	Trains	429-33	S/S. There are 4 stamps in set issued in sheets of 8 + label. Map of train line on label.	A	Map of rail system on margin		542-45, B25	3.12
2011	Bulgaria	1700th anniversary of the Edict of Serdica by the Roman emperor Galerius	4571	S/S	AR	View/map of Serdica on margin and stamp	65s	B341	MS4795
2011	Bulgaria	Northern Region of Bulgaria	4573	S/S of 4	OL	Outline of Bulgaria on margin	10s, 50s, 65s,	B343	MS4798

Issue Date	Country	Issue	Scott Cat. #	Format (Single Stamp)	Grade	Coverage	Face Value	Michel	SG
2011	Bulgaria	145th anniv. First Railway in Bulgaria	4580	S/S of 3 + 1 label	A	Route of first railway on label	0.65, 1, 1.15l	B349	MS4805
2011	Bulgaria	First Bulgarians in Dakar Rally	4582	S/S of 2 + 2 labels	A	Route of rally on label	2x1.5l	B352	4807
2011	Bulgaria	Int'l Day of Black Sea	4583	S/S of 2	A	Black Sea and surrounding areas on stamps and margin	2x1.00l	B353	MS4808
2011	Burma	Government building	383		A	Burma	100k	394	3.12
2011	Cayman Islands	Pioneers of Cayman	1087a	Booklet of 6	A	Map of Cayman area in background	6x20c	1205 note	3.12
2011	Cayman Islands	Pioneers of Cayman	1088a	Booklet of 6	A	Map of Cayman area in background	6x25c	1206 note	3.12
2011	Cayman Islands	Pioneers of Cayman	1089a	Booklet of 6	A	Map of Cayman area in background	6x75c	1207 note	3.12
2011	Cayman Islands	Pioneers of Cayman	1090a	Booklet of 6	A	Map of Cayman area in background	6x\$1.50	1208 note	3.12
2011	China (People's Republic)	Tianjin New Area	3969		A	Map of industrial park	\$1.20	2.12	3.12
2011	China (People's Republic)	Tianjin New Area	3970	S/S	A	World map in background on margin	\$6	2.12	3.12
2009	Cuba	Darwin	4924B		A	World map showing	65c	2.12	5354
2011	Denmark	Bike Race	1557a	S/S of 6	A	Route of race on	8k each	1661	1656
2011	Dominica	World Cricket Cup	2761	S/S	A	Map of India on margin showing locations of	\$5	2.12	3.12
2011	Ecuador	Telecommunications Day	2029	Block of 4	A	World map in background on each	50c each	2.12	3.12
2011	Egypt	Alexandria - Arab Tour-	2066		A	North Africa	150p	2.12	3.12
2011	Estonia	Euro Coins	687		A	Europe on €2 coin	€ 2.10	712	665
2011	France	50th anniv. Council of Europe	1069		A	Stylized Europe on globe	89c	69	3.12
1994	Gabon	Provincial Map	792a	Dated 1994	A	Gabon	10fr	Not listed	3.12
1994	Gabon	Provincial Map	793a	Dated 1994	A	Gabon	25 fr	Not listed	3.12
1993	Gabon	Provincial Map	794		A	Gabon	50fr	1162	3.12
2010	Gabon	Rotary Int'l 50th anniv. In Gabon	1082		A	Outline of Gabon	250 fr	2.12	3.12
2010	Gabon	Gabon Information	1083		A	Outline of Gabon	500fr	1697	3.12
2010	Gabon	Gabon Art	1085		A	Outline of Gabon	250 fr	1699	3.12
2010	Gabon	Gabon Art	1086		A	Outline of Gabon	250 fr	1700	3.12
2011	Gambia	Jane Goodall	3378	S/S of 3, 3378a-c	A	Nice globes in frame on margin of	35d each	2.12	3.12
2011	Gambia	Jane Goodall	3379	S/S of 3, 3379a-c	A	Nice globes in frame on margin of	35d each	2.12	3.12
2011	Germany	Fortified Church of Birtan (Birthalm) in Romania	2638	Mini-sheet of 10. Joint issue with Romania	AR	Old map of area in background of stamp	75c	2889	3.12
2011	Great Britain (Jersey)	Finance Industry 50th anniv.	1540	S/S	A	Nice outline of Jersey	£3	B96	MS1611
2011	Guyana	Tenth World Cricket Cup	4073	S/S	A	India with locations of games shown	\$300	2.12	3.12

Issue Date	Country	Issue	Scott Cat. #	Format (Single Stamp)	Grade	Coverage	Face Value	Michel	SG
2011	India	Africa/India Forum	2526a	S/S of 2, 2525-26	A	Africa, India on margin	5r, 25r	B96	3.12
2011	Iran	Electronic Communica-	3031		A	Iran	2000r	3.12	3307
2010	Israel	Canada-Israel Friend- ship	1812	Joint with Can- ada. Same	A	World map on sel- vage	4.60s	2108	1993
2010	Israel	200th anniv independ- ence of 5 Latin Ameri- can countries	1838	S/S of 12 + 12 labels	A	South and Central America on margin	1.70s	2175?	2024 note
2011	Israel	Mt. Carmel Training	1880		A	Globe	5s	2205	2084
2011	Israel	Admission to Organiza- tion for Economic Coop- eration and Develop-	1898		A	Globe	9.30s	2229	3.12
2011	Luxembourg	Postcheque 100th an- niv.	1324		A	World map, plus small map of Lux- embourg on em-	60c	1925	3.12
2011	Mauritius	Observation of Transit of Venus by Pingre in 1761	1095		A	Mauritius	11r	1103	1219
2011	Netherlands	Tourism - Almere, Eind- hoven	1380-84	Sheet of 5	A	Globe on stamp, topo map on mar- gin	1st class	2827 or 2828	3.12
2011	Netherlands	Tourism - Almere, Eind- hoven	1384a	Sheet of 5	A	Globe on stamp, topo map on mar- gin	1st class	2827 or 2828	3.12
2011	Netherlands	Univ of Utrecht	1386	Sheet of 12. Also booklet.	A	Eastern Hemi- sphere on 1386d	46c each	2833	3.12
2011	Netherlands	City of Netherlands	1387	Sheet of 12, 1387a-k	A	Netherlands on 2 stamps (2x1387k)	46c each	2840	3.12
2011	Netherlands	Relations with South Africa	1392	Sheet of 6	A	Africa and Nether- lands on margin	1st class	B136	3.12
2011	Netherlands	Relations with South Africa	1392 note	Sheet of 6	A	South Africa and Netherlands on	1st class	B137	3.12
2010	Nevis	Engagement of Prince William and Catherine	1647	S/S	A	United Kingdom on margin	\$6	2.12	3.12
2011	New Caledonia	14th Pacific Games	1109		A	New Caledonia	110fr	1553	3.12
2011	New Zealand	Tourism	2378a	S/S of 6	A	There is a small map of New Zea- land on the end of the suitcase on the sheet margin. I noted it as A grade since this is a very unusual place to	60c to \$2.90	3.12	MS3320
2011	New Zealand - Ross Dependency	"Race to the Pole"	L119- 123	5 individual stamps	A	Nice outline of Ant- arctica. Margin of sheets has outlines of Antarctica used for color alignment	60c to \$2.90	3.12	126-30
2011	New Zealand - Ross Dependency	"Race to the Pole"	L123a	S/S - above 5 stamps	A	Very good map of Antarctica on mar- gin, Antarctica on	60c to \$2.91	3.12	MS131

Issue Date	Country	Issue	Scott Cat. #	Format (Single Stamp)	Grade	Coverage	Face Value	Michel	SG
2010	Niger	50th anniv. Independence	1118		A	Outline of Niger 1000fr		2015	1331
2011	Nigeria	Benue State	837-40		A	Small map of Benue State on each stamp	20n, 30n, 40n, 50n	3.12	3.12
2011	Norway	First person to South Pole	1643		A	Route of Roald Amundsen's expedition to South Pole	14k	1751	1786
2010	Oman	Jewel of Muscat	509	S/S	AR	Old world map on	100b	B49	3.12
2010	Oman	National Day	511	S/S of 2, 511a-b	A	Somewhat stylized Oman on 511a	100b, 150b	B52	3.12
2011	Pakistan	Census	1139		OL	Outline map of	Rs 10	1358	1398
2011	Peru	Lions Meeting	1759		A	South America	7.80s	3.12	3.12
2011	Peru	Pre-Colombian Cultures	1774-75		A	Location of archeological sites on	6.40s each	3.12	3.12
2011	Philippines	Valentine Day	3347	Pair, 3347a-b	A	Globe	7p each	4469-70	3.12
2011	Pitcairn Islands	Parkin Christain	722a		OC	Compass rose	\$1.50	3.12	840
2011	Pitcairn Islands	Parkin Christain	722b		A	Globe	\$1.80	3.12	841
2010	Romania	Danube Heraldry - Ram Fortress	5208		A	Danube showing location of Fortress	1.40 l	6469	7075
2010	Romania	Danube Heraldry - Sava Ognyanov Theater, Ruse	5209		A	Danube showing location of theater	2.40 l	647	7076
2010	Romania	Danube Heraldry - Bogdan Petriceicu Hasdeu Univ., Cahul	5210		A	Danube showing location of university	3.10 l	6471	7077
2010	Romania	Danube Heraldry - Assumption of the Virgin Church, Izmail	5211		A	Danube showing location of church	4.30 l	6472	7078
2010	Romania	Danube Heraldry	5211a	S/S of 4, 5208-11	A, AR	As above and excellent old map in background on	1.40 l to 4.30l	B479	MS7079
2011	Romania	World Down Syn-	5244		A	Globe	3 l	6505	7113
2011	Russia	Barclay de Tolly - 250th birth anniv.	7290		AR	Old map of Battle of Borodino	15p	1743	3.12
2007	Saint Vincent	Maps	3566A	See 515-17	A	St. Vincent	30c	6420	3.12
2007	Saint Vincent	Maps	3566B	See 515-17. Inscribed Grenadines of St. Vincent	A	Bequia	10c	A6355	3.12
2008	Saint Vincent	Maps	3566C	See 515-17. Inscribed Grenadines of St. Vincent	A	Bequia	30c	6421	3.12
2007	Saint Vincent	Maps	3566D	See 515-17. Inscribed Grenadines of St. Vincent	A	Mayreau and Tobago Cays	10c	B6355	3.12
2007	Saint Vincent	Maps	3566E	See 515-17. Inscribed Grenadines of St. Vincent. Denomination in lower left.	A	Mayreau and Tobago Cays	30c	6422 l	3.12

Issue Date	Country	Issue	Scott Cat. #	Format (Single Stamp)	Grade	Coverage	Face Value	Michel	SG
2007	Saint Vincent	Maps	3566F	See 515-17. Inscribed Grenadines of St. Vincent in center.	A	Mayreau and Tobago Cays	30c	6422 II	3.12
2010	Senegal	Offensive for Food Security	1665	Date on stamp is 2009 but	A	Africa outline	100fr	2166	1828
2010	Senegal	Offensive for Food Security	1665	Date on stamp is 2009 but	A	Senegal outline	200fr	2167	1829
2010	Senegal	Offensive for Food Security	1665	Date on stamp is 2009 but	A	Africa outline	250fr	2168	1830
2010	Senegal	Offensive for Food Security	1666	Date on stamp is 2009 but	A	Africa outline	400fr	2169	1831
1998	South Africa	Tourism - Western Cape	C21a	Booklet, 2 each C17-21	A	Map of South Africa with Western Cape area highlighted - inside back cover of booklet	1.30r ("Airmail Post-card" rate)	1164-68	1084-88 (SB50)

New Issue Illustrations continued.

2001. - Timbres d'affranchissement courant. Tourisme (carte du pays et soleil stylisés). Multicolores. Auto-adhésifs. Bordés de lignes ondulées à gauche et à droite.

49 Série indivisible (3 val. : 30 p., 40 p. et 75 p.) 3 50 3 50

ATM Example 1 - Spain.

ESPAÑA (Distributeurs)

2000. - Timbres d'affranchissement courant. Cinquantenaire de la Convention Européenne des Droits de l'Homme. Globe terrestre. Auto-adhésifs. Bordés de lignes ondulées à gauche et à droite.

42 Série indivisible (3 val. : 25 p., 35 p. et 70 p.) 3 » 3 »

ATM Example 2 - Spain.

2002. - 3^e Biennale philatélique de Paris (08-10.02). Timbre de distributeur. Type P (Lisa). Papier adhésif bleu clair. Impression en noir.

Type P (Lisa). Avènement de l'Euro (sigles €).

493	0,01 EUR à 99,99 EUR avec minimum de 7 50	Valeur faciale x 5	7 50
494	0,41 EUR (E)		7 50
495	0,69 EUR (LETTRE)		12 »
496	2,35 EUR (C)		12 »
497	2,35 EUR (J+1D)		16 50
498	3,30 EUR (J+1R)		16 50
499	3,30 EUR (J+2N)		16 50

ATM Example 3 - France.

2009 - SALON PHILATELIQUE DE PRINTEMPS-MACON 2009 (27-29.03) - Timbre de distributeur LISA1. Papier adhésif, quadrichromie Type AW. Bandes de phosphore à gauche et à droite. Impression en noir.

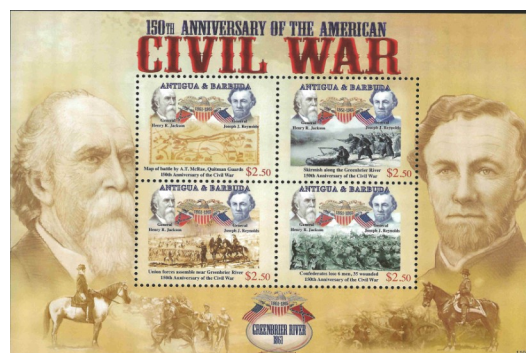
Type AW (LISA 1) Macon : Pont Saint-Laurent, carte du département, vestige de l'ancienne cathédrale Saint-Vincent.

731	0,51 EUR à 99,99EUR avec minimum de 2,00	Valeur faciale x 4	3 »
732	0,51 EUR (E)		2 »
733	0,70 EUR (P)		3 »
734	0,90 EUR (LETTRE)		3 50

ATM Example 4 - France.



Argentina 2615.



Antigua 3134.



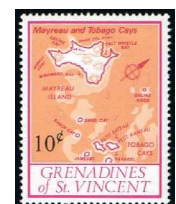
Austria 2336.



Austria Parcel Stamp.



Ross Dependency L123a.



St. Vincent (Skeleton) Example.



Collectors of Maps on stamps

Editor: Martin Oakes
 2100 Oriole Drive
 Freeport, IL 61032, USA
 Email: martinoakes@aeroinc.net



www.mapsonstamps.com

ISSN 1930-2053

The CartoPhilatelic Society is a nonprofit philatelic organization with a world-wide membership of collectors of maps on stamps. Founded in 1955, the organization was rejuvenated in 2003. We are associated with the American Philatelic Society and the American Topical Association. Annual dues are US\$18 for residents of North America, and US\$20 for members residing elsewhere for hard copy, and US\$15 for PDF everywhere. You are cordially invited to join us and share our enthusiasm for maps on stamps. A membership application may be found on our website or obtained from the Secretary. Please send your application and dues to the Treasurer.

President & Check-list Editor	David Wolfersberger	768 Chain Ridge Road	St. Louis, MO 63122
Vice President	Mark Honig	Kluivervkamp 28	1541 XZ Koog aan de Zaan, Netherlands
Secretary	Marybeth Sulkowski	Unit 209 1117 Douglas Ave.	North Providence RI 02904
Treasurer	Ed Vallery	5 Thompson Lane	Durham, NH 03824-3022
European Rep.	Volker Woesner	Sandkoppel 10	24119 Kronshagen Germany
Rep. at Large	Phil Coop	4350 Tuckahoe Road	Memphis, TN 38117
Webmaster	Reese Plews		rplews@tkb.att.ne.jp

Email addresses may be found on our website.

© 2012 The CartoPhilatelic Society. All rights reserved. Reproduction prohibited without express permission of Editor or Author.

New Issue Illustrations cont.



Bulgaria 4583.



Bulgaria 4580.



Bulgaria 4582.



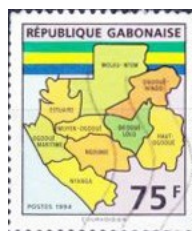
Netherlands 1392.



Bosnia & Herzegovina (Serb) 433.



Bosnia & Herzegovina (Croat) 250.



Gabon 794.



Russia 7290.



Dominica 2761.