

The New CartoPhilatelist

No. 41 April, 2013

New_CartoPhilatelist_n41_APR_2013.pdf

ISSN 1930-2053

Journal of the CartoPhilatelic Society

©The CartoPhilatelic Society

All Rights Reserved

No Unauthorized Reproduction, Transcription, or Resale

Without The Written Permission of the President,

CartoPhilatelic Society. For Contact Information:

www.mapsonstamps.com

www.cartophilately.org



French Southern and Antarctic Territories. David Wolfersberger.

Formally named Territoire des Terres Australes et Antarctiques Françaises (Territory of the French Southern and Antarctic Lands) this French overseas territory is more commonly referred to as Terres Australes et Antarctiques Françaises (abbreviated TAAF) or in English French Southern and Antarctic Territories (FSAT). FSAT consists of five administrative departments located southeast and east of Africa, islands in the southern Indian Ocean, some near Madagascar and others about equidistant between Africa, Antarctica, and Australia:

- Île Amsterdam and Île Saint-Paul – volcanic islands.
- Îles Crozet (archipelago).
- Îles Kerguelen (archipelago).
- Îles Éparses (Scattered Islands): Basas da India (atoll), Île Europa, Îles Glorieuses, Île Juan de Nova, Banc du Geyser (reef) and Île Tromelin, all located around Madagascar.
- Terre Adélie (Adélie Land) – a thin slice of Antarctica that is not universally recognized as French territory.

These territories have no permanent inhabitants and are staffed or visited by researchers studying the native fauna; scientists at the various scientific and weather stations; fishermen; and military personnel. The population of the territories is estimated to vary from 150 in the winter to 300 in the summer. Except for Îles Éparses, the other districts became an overseas territory of France in 1955. Îles Éparses became part of TAAF in 2007. The headquarters of the territorial administrator is in St. Pierre, Reunion.

TAAF has issued many beautiful and detailed map stamps, many of which are hand-somely engraved. This article will examine

stamps and other postal and philatelic material from TAAF that have map and map related themes.

The territory's coat of arms is shown in Figure 1 (Sc C23).

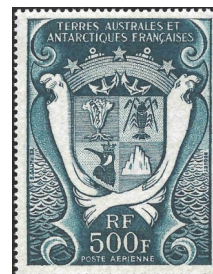


Fig. 1, Sc C23.

I could not find any map stamp or sheet that shows all five of the administrative districts. The stamps on a souvenir sheet, Figure 2 (Sc 342), picture the post offices of the original four districts. On the margin is a globe showing the location of these districts and the distance between several of them and the nearest large city/island (Tasmania or Reunion). The distances are very hard to read but range from 1500 to 3700 km indicating the remoteness of the components of the territory. Also on the margin of the sheet the coordinates of the post offices are noted.



Fig. 2, Sc 342.

Inside this issue:

French Southern & Antarctic Territories	1
Portuguese Hemisphere	3
Pick an "All Star" Team	8
Map Cancellations	9
Society News	12
New Issues	15

Special points of interest:

Dues reminder	7
Closed Album	11
Retiring President	19



Since Îles Éparses became part of the territory in 2007 a post office was established there on Île Europa (longitude 40° 21'E, latitude 22°21'S).

Another souvenir sheet, Figure 3 (Sc 361) shows at least some of the islands in the original four districts. The stamps feature Îles Crozet; Îles Kerguelen; Île Amsterdam and Île St. Paul; and Terre Adélie. The stamps showing Îles Crozet and Îles Amsterdam and St. Paul are interesting in that they show not only detailed topographic maps of the islands but also a larger scale map indicating their relative locations to each other.

A third sheet with the original districts is in Figure 4 (Sc 291). This sheet features fauna of each district on four stamps. On the margin of the sheet is a small inset map of each district with the latitude and longitude shown (except of



Fig. 4, Sc 291.

Fig. 3, Sc 361.

Terre Adélie). The inset for Terre Adélie shows the Antarctic with Terre Adélie highlighted in red.

Another sheet showing the relative locations of the districts is Figure 5 (Sc 418). The inscription on this sheet states to the effect that by 2090 there

will be a solar powered, stratospheric shuttle (Marion Dufresne V) that will connect all of the TAAF and Reunion within 30 minutes maximum. Considering the distances involved the speed to accomplish this is quite high – about 7400 kph (4600 mph). The relative locations of the parts of the TAAF are shown on the map in the margin of the sheet. (Note: there is a current vessel



Fig. 5, Sc 418.

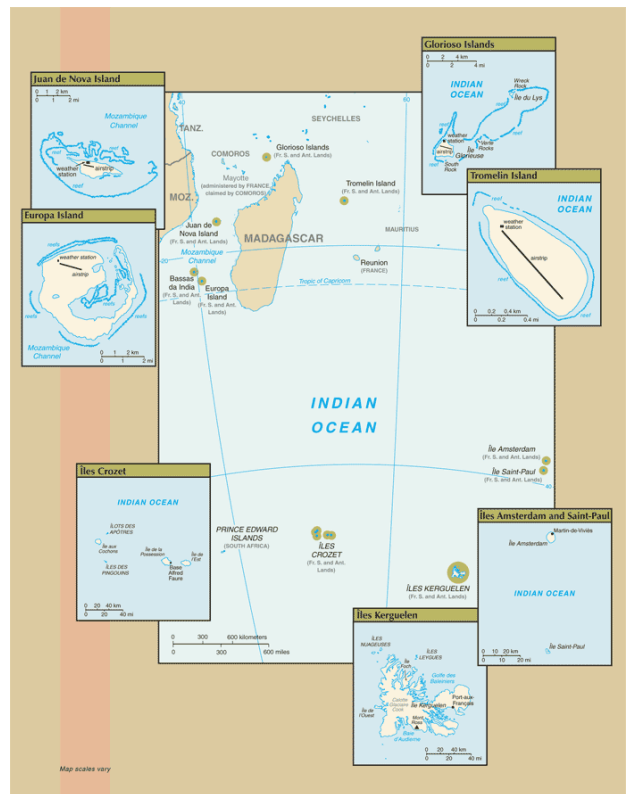


Fig. 6, FSAT Map CIA.

named the Marion Dufresne II, a highly advanced oceanographic ship that is active in this area.)

For reference a current map with all of the territories except Terre Adélie is shown (Figure 6). (Reference: <https://www.cia.gov/library/publications/the-world-factbook/geos/fs.html>)

Île Amsterdam and Île Saint-Paul. Île Amsterdam and Île St. Paul are located in the southern Indian Ocean about equidistant from Africa and Australia. Île Amsterdam (37° 49' 33" S, 77° 33' 17" E) was discovered in 1522 by the Spanish explorer Juan Sebastián Elcano; however it was not named at that time but in 1633 was named by a Dutch seaman, Anthonie van Diemen, as Nieuw Amsterdam. It was claimed by France in 1843 and in 1924 became a French colony. A volcanic island, Île Amsterdam has an area of about 55 km², steep coastal cliffs and a large plateau in the center of the now inactive volcano. The island has some trees, grass, ferns and moss.

(Continued on p. 7)

From Lisbon to Nagasaki : the “Portuguese Hemisphere” ~ Pierre Moïse



Fig. 1 The Portuguese hemisphere.

In 1519, the Portuguese Atlas Miller describes the whole known world at the beginning of the XVIth century. One of the maps is called “the Portuguese hemisphere,” Fig. 1. This map shows Europe, Africa, Atlantic Ocean, Indian Ocean and the Antarctic continent as imagined by Ptolemy. Magellan has not yet found the way to the Pacific Ocean and, in Western Europe, nobody knew that Chinese Admiral Zhen had sailed across the Indian Ocean one century before. The other hemisphere is still unknown.

This wonderful atlas was shown in Paris from October 2012 to January 2013 at the BNF (*Bibliothèque Nationale de France*) exhibition “The Golden Age of Nautical Charts”.

In 1972, Brazil issued a stamp showing this page of the atlas (Fig. 2, Brazil Sc. 1241).

The hemisphere shows the growth of Portuguese territories all over the ocean. How did this growth happen?

In the Middle Ages, after crossing the ocean, Vikings settled in Greenland, but these settlements collapsed because of climate change. After this western nauti-



Fig. 2, Brazil Sc.1241.

cal period, European people turned to the East from where the Mongols came, bringing silk and other wonders with them. The *Silk Road* opened, it was controlled by Mediterranean cities, first Constantinople then Venice.

It took a long time to reach India and China by these routes. European merchants and their governments wanted to travel faster and further from their countries borders, without crossing unfriendly territories.

Sea routes had to be found; but the ocean is huge and dangerous. Until the XVth century, the Portuguese were the only mariners to explore it.

1. Cape Bojador (A headland on the northern coast of Western Sahara.)

Portugal was liberated from Moorish colonization in the early 1100’s and became an independent kingdom. A period of reconstruction began and they reached the Canary Islands in about 1336 where several expeditions ended in following years.

Castilian invaders battled Portugal for control of the Canary Islands for nearly a century, but it was not until 1479 that the Portuguese were finally expelled and the islands became Spanish (Fig. 3, Spain Sc.2244).



Fig. 3, Spain Sc. 2244.

The Portuguese had to wait until 1415 for King João 1st and his son Dom Henry the Navigator to get their first overseas colony in Ceuta, located on the North African coast at the Strait of Gibraltar. Caravans though Sahara, bringing with them gold and slaves, arrived there. Ceuta will be Portuguese until 1580. (Fig. 4, Spain 993).



Fig. 4, Spain Sc. 993.

An important issue now has to be solved: how much further is it to the spice lands? Is it possible to discover the Muslim empire limits and find an alternative route to India?

The big competition to sail South and East began with João Gonçalves Zarco and Tristão Vaz Teixeira who discover Porto Island, a small island close to Madeira, in 1419. The main island Madeira is discovered the following year and its colonization begins. (Fig. 5, Portugal, Madeira Sc.70).



Fig. 5, Portugal, Madeira Sc.70.

Diogo de Silves and Diodo de Teive discovered Azores in 1427 (Fig. 6, Portugal, Azores Sc.316) and its colonization begins in 1431.



Fig. 6, Portugal, Azores Sc.316.

A barrier, not previously exceeded, must be passed: Cape Bojador. Located in the middle of the Western Sahara coast (Fig. 7, Algeria Sc. 569). It is considered the limit of known navigation. Going further is real exploration. Its Arabic name, "Abu Khatar", means "the father of danger". The race to this cape goes on with mapping of the African coast. Gil Eanes doubles the length of the known coast in 1434. Henry the navigator is granted the monopoly of navigation, war and trade in the lands south of it in 1443. Papal bulls in 1452 and 1455 confirm this monopoly.



Fig. 7, Algeria Sc. 569.

2. All around Africa.

Nuno Tristão reaches Arguin in 1443. This island is located on the Mauritanian coast in the North of the country; close to Naoudibou which is today the harbor reached by the railway coming from the desert iron mines of Zouerat. The first trading post is set up on the island for acquiring slaves and Arabic gum to send to Portugal. Arguin is now a World Heritage Site as a major breeding site for migratory birds. Arguin is also located on Algeria Sc. 569, it is the small bay just south of the Saharan border.

In 1444, Dinis Dias reaches Cape Verde (Cabo Verde). Alvares Fernandes reaches Senegal in 1445 and the northern part of Portuguese Guinea in 1446 (Fig. 8, Nigeria Sc. 582).



Fig. 8, Nigeria Sc. 582.

When Henry the Navigator died in 1460, systematic mapping of the Atlantic began, reaching 8° N on the African coast and 40° W in the Sargasso Sea.

Diogo Gomes and António Noli discover Cape Verde Islands in 1461. (Fig. 9, Cape Verde Sc. 277). The Equator is crossed in 1471.

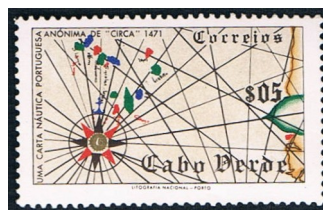


Fig. 9, Cape Verde Sc. 277.

The Portuguese then have great difficulty with navigation; the southern sky is different from what they know, the visible stars are not the same and the references have changed. despite this problem, they continue and explore the whole African coast. They begin with the Gulf of Guinea. João de Santarém and Pedro Escobar discover São Tomé and Píncipe in 1471. (Fig. 10, Sao Tome and Principe Sc. 401).



Fig. 10, Sao Tome and Principe Sc. 401.

In 1479 the Treaty of Alcáçovas establishes Portuguese control of the Azores, Guinea, Elmina, Madeira and Cape Verde Islands.

Colonization of Elmina begins in 1482, after building a fort called Saint Georges of the Mine, located 150 km west of Accra on the Gold Coast (Fig. 11, Ivory Coast Sc. 924). For years, Elmina has been the main Portuguese colony on the African coast noted for gold and slaves.



Fig. 11, Ivory Coast Sc. 924.

The Congo river is reached in 1482 by Diogo Cao. Missionaries, explorers and traders settle there; it becomes the Portuguese Congo, also called Cabinda, later included in Angola which is colonized in 1575. (Fig. 12, Angola Sc. 530).



Fig. 12, Angola Sc. 530.

Bartolomeu Dias rounds the Cape of Good Hope (Fig. 13, South Africa Sc. 815) and enters the Indian Ocean in 1488. This success is the result of 50 years of effort, step by step, one expedition after the other. The route across the Indian Ocean is now straight ahead.



Fig. 13, South Africa Sc. 815.

After the first exploration of the Indian Ocean in 1492, Vasco de Gama's fleet reaches Calicut in India in 1498 (Fig. 14, Mozambique Sc. 490). The route has been opened.



Fig. 14, Mozambique Sc. 490.

Many Portuguese settlements are established along this route. Mozambique is reached in 1505, then Zanzibar and the Persian Gulf. (Fig. 15, Mozambique Sc. 387).



Fig. 15, Mozambique Sc. 387.

In India, the Portuguese settled in Goa which became the main cultural and creative center overseas. In 1568, the cartographer Fernão Vaz Dourado working in Goa, drew the first maps showing nautical and land information together. These maps were also the first ones drawn outside Europe and Goa became an important mapping center.

“... and through the lens of the cartographical works associated with the city, it becomes possible to perceive Goa as a new ‘Ville monde’, a place of convergence, accumulation and cultural and scientific reformulation at world scale” writes Professor Angelo Cattaneo from Universidade Nova de Lisboa for BNF colloquium in December 2012.

Goa, Daman and Diu continued to be Portuguese colonies until the XXth century (Fig. 16, Portuguese India Sc. 552).



Fig. 16, Portuguese India Sc. 552.

3. When the Eastern way meets the Western.

While relationship with India developed, Portuguese sailors sailed the Atlantic Ocean from North to South but the winds pushed the boats to the West and Pedro Alvares Cabral discovered Brazil in 1500 (Fig. 17, Brazil Sc. 289).



Fig. 17, Brazil Sc. 289.

Portuguese navigators went further than India in order to compete with the Silk Road. Jorge Alvares lands in China in 1513. The Emperor of China allows Portugal to establish a colony in Macau for trading purposes in 1557. (Fig. 18, Macau Sc. 383).



Fig. 18, Macau Sc. 383.

In the early XVIth century, Spain and Portugal competes in South eastern Asia as they did in America 30 years earlier. While the Treaty of Tordesillas proposes a limit on the Spanish and Portuguese area of control in the Atlantic region, this limit between both kingdoms does not

terminate on the other side of the world. Portuguese Antonio de Abreu arrives in Moluccas from the West in 1512, going to China. This country was well known for its production of spices. They built a settlement in Ternate in 1522.

As the Western route is given to Spain by Treaty of Tordesillas, the Portuguese navigator Ferdinand Magellan sailed westward around the world in the name of the King of Spain.

So, on behalf of Spain, Magellan arrived there from the East 10 years after the Portuguese. He reached the Philippines in 1521 where he died. His crew lands in Moluccas the following year, just after the building of the Ternate settlement by the Portuguese.

A conflict between Spain and Portugal begins in order to define who this territory could belong to.

After the Spanish defeat seven years later, the Treaty of Zaragoza was signed on 22 April of 1529 by King John III and the Emperor Charles V. Zaragoza is the capital of Aragon, in Spain. It defined the areas of Spanish and Portuguese influences in Asia. Moluccas are controlled by Portugal and the limit is the 133E meridian as shown on the stamp (Fig. 19, Indonesia local Mi16), with a Spanish enclave for Philippines.



Fig. 19, Indonesia local Mi16.

The Western route continued to be used by the Spanish. In 1513 Vasco Nunez de Balboa crossed the isthmus of Panama. After crossing the Atlantic ocean then travelling over land, Spanish ships continued across the Pacific as shown on Fig. 20, Philippines Sc. C62.



Fig. 20, Philippines Sc. C62.

After the arrival of the Dutch, the Moluccas remained very important to them until the XXth century when this region refused to be integrated into the new Republic of Indonesia in 1950. The Republik Maluku Selatan (Republic of South Mollucas) has been created, with the support of the Dutch who wanted to create a couple of such states instead of the single Indonesia. Stamps were issued. But, as the new state was not recognized by the UPU, these issues are considered Cinderella stamps. The labels are well known even if they do not have any philatelic value! They have a real historical significance.



Fig. 21, Moluccas, local.

In 1543, a Portuguese ship landed in Tanegashima, a small island south of Kyushu Island near Nagasaki. Portuguese ships started sailing from Portugal to Nagasaki. This city is finally established in 1571. (Fig. 22, Japan Sc. 1644).



Fig. 22, Japan Sc. 1644.

5. Stopping Expansion.

At the end of XVIth century, Portugal begins to loose overseas territories. There are two causes, occupation by Spain and the impact of Dutch trade.

The annexation of Portugal by Spain in 1580 ends its independence until 1640. At this time the Spanish priority is to expand in America, not Asia. Brazil is the main Portuguese colony in the Americas.

Dutch merchants had problems buying spices on the Lisbon market and selling them on the European market. So they decided to follow the Portuguese route and go to the Far East. The Portuguese fled Java Island in Indonesia after their

fleet was destroyed by the Dutch off the coast of Banten (West of Java, by Sunda Strait). This after a one week battle happened between Christmas 1601 and January 1st 1602.

This first failure will be followed by inevitable strengthening of Dutch power in South East Asia. The Dutch founded in 1602 the « Vereenigde Oostindische Compagnie » or VOC (Dutch East India Company) conquers Ambon in Moluccas in 1605. The Portuguese lived definitively Moluccas in 1636.

In 1623, the Portuguese merchants had to leave Japan. Then Portuguese ships are forbidden in 1637 in Japanese harbors. In 1638, the Dutch take place of Portuguese in Ceylon. In 1660, Makas-



Fig. 23, Timor Sc. 280.

sar loss marked the collapse of the Portuguese empire in Asia. Makassar is located in Sulawesi, on Makassar Strait in front of Borneo. Portugal only kept Timor (Fig. 23, Timor Sc. 280) from this period.

Portuguese supremacy ends in the middle of XVIIth century when Portugal became independent after Spanish occupation; the world had changed. The Dutch and British developed their settlements in India, Indonesia or Malaysia and managed the silk and spices trade. That is another story.

6. The steps from Lisbon to Nagasaki

Many Portuguese trading posts were established along the route from Portugal to the Far East.

They make a continuous link, broken only by history. It shows very active Portuguese trade in the XVIth century. And the heart of the Portuguese overseas world lived in Goa.

(Continued on p. 7)

From Lisbon to Nagasaki, the Portuguese navigators followed routes along which settlements were established :

Ceuta (1415 – 1580), Azores (from 1427), Madeira (from 1419), Cape Verde (1462 – 1975), Brazil (1500 – 1822), Guinea – Bissau (1446 – 1974), Elmina (1482 – 1637), Sao Tome e Principe (1485 – 1975), Angola (1575 – 1975), Mozambique (1505 – 1975), Mombasa (1569 - 1698), Mascate (1508 – 1650), Ormuz (1515 – 1622), Portuguese India - Diu (1535 – 1961), Goa (1510 – 1961), Cochim (1502 – 1663), Calicut (1511 – 1657), Bombay (1534 – 1661) - Ceylan (1518 – 1656), Malacca (1511 – 1641), Timor (1520 – to Indonésia 1975 – 2002), Ternate - Moluccas (1522 – 1622), Macao (1553 – 1999), Nagasaki (1571 – 1638).

References.

L'âge d'or des cartes marines (the Golden Age of Nautical Charts) BNF Paris October 2012 – January 2013, BNF exhibition catalogue October 2012 and documents shown at the exhibition.

BNF Colloquium December 3-4 2012 Around the exhibition:

Le grand Atlas de l'Histoire Mondiale, Albin Michel – Encyclopedia Universalis, Paris 1978, French edition of the Times Atlas of World History, London 1978

Jean Lefort L'aventure Cartographique Belin Pour la Science Paris 2004

<http://www.portugalmania.com/culture/langue/la-langue-portugaise.htm>

<http://www.larousse.fr/archives/grande-encyclopedie>

<http://www.universalis.fr/>

<http://gallica.bnf.fr>, <http://www.bnf.fr>

bible.yvert.com

All information coming from Wikipedia has been confirmed by other sources.

All stamp references are Scott except Indonesia local (Michel).

DUES REMINDER!

Your dues expire at the end of March 2013 (unless you have prepaid). Therefore please pay dues for April 2013 through March 2014 as soon as possible. Dues should be sent to :

Ed Vallery,
5 Thompson Lane,
Durham, NH 03824-3002.

or by PayPal to Ed at EHVALLERY@aol.com.

To receive *The New CartoPhilatelist* dues amounts remain the same:

Electronic Delivery (Download)	US \$15.00
Hardcopy to US addresses:	US \$18.00
Hardcopy all other addresses:	US \$20.00

Please pay your dues promptly!!

Thanks and happy collecting!

(FSAT continued from p. 2)

Île Amsterdam has been shown on two stamps. The first (Figure 7, Sc C19) was issued in 1989 to commemorate the 40th anniversary of the founding of the meteorological station, that is still in operation. The stamp features an excellent topographic representation of the island with the location coordinates shown. Several locations are also named: La Base which is the scientific base now known as Base Martin de Vivies; Point d'Entrecasteaux (now Falaise d'Entrecasteaux – Cliffs of Entrecasteaux); La Dives – the highest point on the island at 840m; and Le Museau de Tanche, identified on a current map as La Grande Marmite which seems to be the center of the dormant volcano.



Fig. 7, Sc C19.

The second stamp featuring Île Amsterdam, issued in 1974, is shown in Figure 8 (Sc 57). While not important from a cartophilatelic view, it does commemorate the 25th anniversary of mail service that coincided with the establishment of the permanent weather station at Base Martin de Vivies. The simple cartographic items on this stamp are an outline map of France and an outline map of Île Amsterdam.



Fig. 8, Sc 57.

A small volcanic island (7 km²) (38° 43' 48" S, 77° 31' 20" E) Île Saint-Paul was discovered in 1599 and claimed by France in 1843. Between 1843 and 1853 it served as a base for the fishing industry in the area but was abandoned. Between then and 1928 ships occasionally stopped at the island to hunt seals or catch fish. In 1928 a lobster cannery was established but it failed in 1931. Seven of the original

(Portuguese, continued from p. 6)

Some of these continue to be Portuguese settlements until the XXth century. (Fig. 24 Angola Sc. 383).

Since 1999, only Azores and Madeira remain Portuguese territories. They are integrated into the Portuguese republic as autonomous regions, with regional executives.

The Portuguese language is spoken by 180 million people, fifth in the world, after Mandarin Chinese, Spanish, English and Hindi, just before Bengali.



Fig. 24, Angola Sc. 383.

Portuguese overseas expansion is also a step in the evolution of trade power in Europe. It moved from the Mediterranean world to the Atlantic Ocean and Western Europe before crossing the Atlantic and moving to the Pacific.

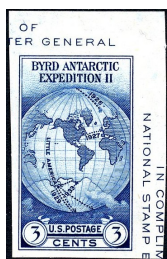
Finally, while sailing along these routes, the Portuguese developed a new way of viewing charts and maps. The milestones of this story are when Henry the navigator sponsored the mapping of the north Atlantic and Fernão Vaz Dourado, working in Goa, developed new cartographic methods improving accuracy and the representation of continents, particularly in Africa and the Orient. ■

workers were left on the island to protect goods left there with the plan to return quickly to remove them. However, by the time the rescue vessel arrived three years later, five of the seven had died. Since then, a small cabin was established on the island to serve as base for infrequent visits by meteorologists. The only vegetation on Île Saint-Paul is grass.

One stamp (Figure 9, Sc 398) shows the island. The map is a nice topographic map which clearly shows the crater, which is labeled Bassin du Cratere. One side of the crater has collapsed

(Continued on p. 19)

Pick an American All-Star Team, Tim Olmstead.



1 - Sc 768a



2 - Sc 783



3 - Sc 795



4 - Sc 858



5 - Sc 906



6 - Sc 952



7 - Sc 955



8 - Sc 957



9 - Sc 1016



10 - Sc 1018



11 - Sc 1028



12 - 1066



13 - Sc 1069



14 - Sc 1070



15 - Sc 1092



16 - Sc 1120



17 - Sc 1131



18 - Sc 1162



19 - Sc 1206



20 - Sc 1232



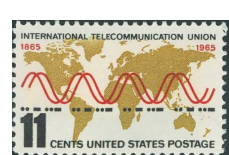
21 - Sc 1247



22 - Sc 1248



23 - Sc 1258



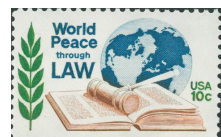
24 - Sc 1274



25 - Sc 1306



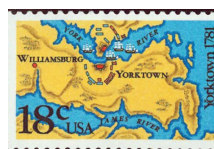
26 - Sc 1308



27 - Sc 1576



26 - Sc 1319



27 - Sc 1937 - 8



28 - Sc 3141



29 - Sc C9



30 - Sc C10



31 - Sc C38



32 - Sc C53



33 - Sc C55

As I write this with the usual mid-February chill and dampness of north-west Oregon continuing to embrace the land, baseball players of the thirty major league teams have reported to spring training at their respective camps in the sunny climes of Arizona and Florida. By the time this issue goes to print the 2013 big league baseball season will have begun in earnest. In July there will be a brief mid-season respite from the rigors of the game, known as the All-Star break, to honor the very best of this season's baseball players as well as the sport itself.

What an appropriate time, then, for us, to choose by popular vote a group of maps on stamps that we believe to be all stars in their field. This is an opportunity for every CPS member to have some fun together.

This contest, will focus on the relatively narrow field of American stamps with maps, out of consideration for that nation's Grand Old Game's, and American Independence Day (the 4th of July), because we have to start somewhere. Here are the guidelines for the all-star voting:

1. Scott numbers for each stamp will be used for identification purposes.
2. Select up to nine stamps for this season's "All-Star team."

3. A sampling of American stamps are illustrated as options to consider.
4. The "team" will be the nine top vote getters.
5. Criteria for selection rests solely with individual voters.
6. Voters are encouraged to include comments as to why each selection was made. The best comments may be included in the article announcing the results.
7. Send your votes and comments to

Tim Olmstead at wimseybooks@yahoo.com
or
P. O. Box 3152,
Newberg,
OR 97132.

Deadline is June 10, 2013.

Let's have 100% participation, do vote.

Tim Olmstead

Notes on Map Cancellations. ~ Miklos Pinther.

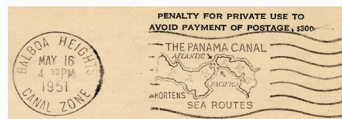


Fig. 2.

Part Two: Fancy Cancels

Precanceled stamps were described in the first part of this discourse where it was pointed out that only one was known with a map motif, the so-called “Lansing Spider” [1]. We now continue with a brief exposé of early pictorial cancels that incorporate a map, and once again note the scarcity of this material.

Let us begin with a few words about terminology. Although “cancellation” is frequently used as a general term to indicate all sorts of markings on stamps and envelopes, sometimes we do need to make differentiations. The following is quoted from a paper read before the Boston Philatelic Society in June 1921: “A *cancellation* is a postmark; but not all postmarks are cancellations. A cancellation is a postmark intended to void or cancel the adhesive... [A *postmark* is] a term used to designate all postal markings not cancellations... always containing the name of the post office and usually the state, and date... A *cancel* is an official obliterator... By an obliterator reference [maybe] made to an unofficial dauber, of cork, wood, rubber, or metal.” [2] The combinations of cancels and postmarks were permitted, but the directives for regulating them remained unclear and sometimes confusing for decades. If all this sounds a bit confusing the illustrations that follow will hopefully offer some clarification.

The designation “**fancy cancel**” generally refers to a graphic or pictorial cancellation whose sole purpose was to “kill” or “obliterate” a stamp, i.e., prevent its re-use and indicate that payment has been made. Fancy cancels neither incorporated a date nor the name of the originating town and state, which was a requirement. Hence, additional postmarks, sometimes manuscript markings, accompanied them. And since a date cancel only required the indication of day and month, the determination of the year of an early fancy cancel is some-

times impossible or frequently challenging, necessitating the examination of collateral information such as similar known covers, content of the mail, etc.

In the United States the hobby of collecting postmarks began sometime around the end of 1850’s – early 1860’s. Undoubtedly what spurred this specialty on was the appearance of “fanciful” or “odd” obliterations created and applied by postmasters or postal clerks to the delight of the public. During these early days John W. Hill, the postmaster of Waterbury, Connecticut, was particularly noted for his imaginative carvings of elephants, stars, bees, etc., that led to his nickname, “The Whittling Yankee.” [3] Within a few years such cancellations became very popular (Fig. 1).



Fig. 1.

Fancy cancels were not recorded in philatelic literature until about sixty years after their first appearance when a collector referred to them as “fanciful cancellations”—and therein lies the probable origin of the term. [4] One of the earliest attempts to recognize and classify postmark collecting was by the publishers of a new philatelic periodical in 1916 called the *Philatelic Gossip*. On these pages A. H. Pike initiated a new “postmark department”. He had a list of about 400 postmark fans whom he challenged to help describe, classify and record this specialty collecting. In the ensuing years Pike’s efforts were duplicated elsewhere, particularly on the pages of *Mekeel’s Weekly Stamp News* by H. P. Atherton, and in a long series of articles by Dr. William Evans in yet another new philatelic publication called *Stamps*. [5]

1850’s-1860’s The first recognized map cancel was actually not a fancy cancel rather a printed “fancy town mark” of Kelley’s Island, Ohio, an island in Lake Erie. It first appeared around 1851 and was used for about ten years. It was printed in the upper left corner of an envelope with a space in the design for a manuscript date mark. The stamp on the cover was usually obliterated with a pen (Fig. 2).

Among the fancy town postmarks Kelley’s Island was the most eye-catching with a clear aim of promoting the island’s commercial and residential possibilities. These cancels are quite rare, perhaps a dozen known, each showing a slightly modified design (Fig. 3).

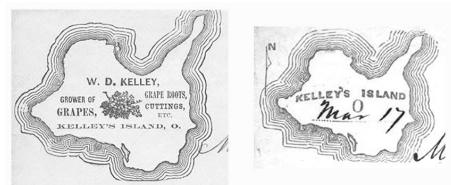


Fig. 3.

In 1861, the first map fancy cancel appeared in Zanesville, Ohio. Actually this is not a map *per se*, rather a graticule representing a globe. But since it is the only one associated with cartography of this period, we should adopt it as belonging to our topical interest. A note of caution, one may come across similar designs, which are in fact “patent grids”. These should not be confused with globes (Fig. 4). Of the Zanesville globe cancels two slightly different versions are known. Skinner and Eno also notes a very similar globe cancel employed in Syracuse, New York, however, the author was unable to verify this (Fig. 5).



Fig. 4.

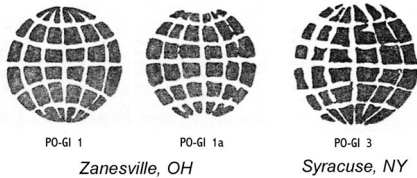


Fig. 5.

Examples off cover—usually on the 3¢ Washington stamp (Scott 65), which paid the basic domestic rate—are scarce but not rare. Their current price ranges from about \$25 to \$125, depending on the quality of the stamp, and the clarity and completeness of the impression. Since date and town name are indicated separately, obviously it is desirable to collect entire covers, or at least a cut piece that includes both the town mark and the fancy cancel. Unfortunately, they are very hard to find (Fig. 6).



Fig. 6.

1920s-1930s

Fancy cancels continued to proliferate, particularly after 1870, through the so-called “banknote period” when popular stamps with portraits were produced by the National Banknote Company. Some philatelists have noted that the generally depressed economy in the early part of the 20th century contributed to the popularity of collecting cancellations as a more affordable branch of philately. [6]

As mentioned above, postal regulations governing the method and application of cancellations was frequently ambiguous.

Directives were revised and reissued; yet both the public (collectors in particular) and employees of post offices often had the impudence, and the fun, of ignoring them. In 1924, a rather peculiar former regulation was reissued requesting that, “A legible impression of the postmarking stamp shall be placed twice on the back of each letter... The postmark shall not be placed on the face of first class registered mail” [7]. Presumably the purpose was to more easily distinguish registered mail from an ordinary one. This opened a floodgate of imaginative ideas for voiding the stamps. When earlier postal clerks created



Fig. 7.

fanciful carved cancels, now collectors besieged postmasters with their own creations.

Records show that during this period over a thousand fancy cancels have been fashioned [8], yet, only four different map cancels are known. They are silhouettes of the states of Illinois, Indiana, Michigan and Wisconsin (Fig. 7).

They were all used in 1929 and 1930. There are some variations in outline and size, and their impressions can be found in both black and purple inks. What is even more interesting is that they can be attributed to only three “designers”: Walter C. Brink, C. A. Paige and H. M. Brehm. Some covers were sent to each other, some to friends and relatives. Many were cancelled with the state outlines, given to a postal clerk who then put it through the mail with two town/date postmarks on the reverse. And they also filled hundreds of requests from collectors. These were just fun philatelic items (Fig. 8). Finally this practice of using unauthorized cancel marks was



brought to an end by the issuance of a clear directive in 1934. Today, such fancy map covers are sold for around \$120 to \$180.

In conclusion, we have seen that among hundreds of wonderful fancy cancels we can find only three examples of maps: the Kelly’s Island townmark of 1850’s, the Zanesville globe of 1861, and the state cancels of 1929. The appearance of fancy cancels gave a boost to map philately and advanced interest in postal history. But the scarcity of map fancy cancels and the prices they demand keep them hidden and perhaps out of reach of most cartophilatelists.

A postscript

There are two other types of map cancellations that are merely mentioned here but deserve our attention: commemorative cancellations and machine or meter cancels. Commemorative cancellations are usually tied to an event. Sometimes the issuance of a map stamp is accompanied with a first day map cancellation such as the recent US global forever stamp. They are date specific. Meter cancellations frequently carry a slogan and may be used over a period of time. Unfortunately, not many cartophilatelists collect cancellations. As a result they are seldom included in our newsletter. A checklist or even a partial listing is yet to be prepared. This is a

(Continued on p. 11)

(Cancellations continued from p. 10)

pity because they frequently contain interesting and useful information that could enrich a collection or supplement a cartophilatelic exhibit. For further information you may wish to browse several past and on-going newsletters. For 19th century cancellations visit the website of the US Cancellation Club at <http://bob.trachimowicz.org/usecchome.htm>.

And if you have the inclination, much useful information about 20th century material may be found on the website of the Postmark Collectors Club at www.postmark.org. The PMCC Museum is claimed to be “the largest single collection of postmarks in the world.” It is just waiting for an interested cartophilatelist to research this wonderful archive! ■

Footnotes:

- [1] “Notes on map cancellations” in *The New CartoPhilatelist*, October 2011, No. 35, pages 1-3.
- [2] “Collecting of Postal Markings” by H. K. Thompson in *Mekeel’s Weekly Stamp News*, August 13, 1921, pages 465-466. This is one of the earliest attempts at definitions, italics added.
- [3] Paul C. Rohloff, *The Waterbury Cancellations, 1865-1890*, published by The Collectors Club of Chicago, 1979.
- [4] Hubert C. Skinner and Amos Eno, *United States Cancellations, 1845-1869*, published by the American Philatelic Society, 1980, pp. 362, see page 10.
- [5] Dr. Evans articles began in *Stamps* with the first issue on September 17, 1932 and ran until April 9, 1938.
- [6] “On the Origin And Evolution of the 20th C. Fancy Cancels” by William C. Walker in *US Cancellation Club News*, five-part series starting in Vol. 15, No. 8, March 1981.
- [7] Foster W. Loso and Heyliger de Windt, *20th Century United States Fancy Cancellations*, Sommerset Press, Inc., 1952, see pages 13-16.
- [8] *Ibid.*

LETTER TO THE EDITOR

I am enclosing an illustration, slightly reduced in size, of a recently issued GB stamp book with a map theme. The stamps were issued on 9th January to mark the 150th anniversary of the London Underground. There were no maps on the stamps, but a miniature sheet did include a small poster showing part of the Underground diagram. A stamp booklet was issued at the same time. On the left it shows part of the first map

designed by Harry Beck issued in 1933. This was more of a diagram than a map as it used straight lines and the stations were evenly spaced rather than being shown in their correct geographical positions. This new kind of map was well received by the travelling public, and has continued to be used up to the present. The 2012 version of the map is shown on the right of the booklet.....

With best wishes,
Bruce Davies



**Closed Album
Al Underberg**



APS Summer Seminar 2012.
Ken Martin, Al Underberg (seated), Richard Nakles and Marilyn Underberg.

On January 30th I received a phone call from Marilyn Underberg that her husband, Al Underberg, had passed away that morning after a brief illness.

Al was a member of our society from 1988 and served our society as Vice President between 2004 and 2010. Al had a huge stamp collection, besides map stamps he collected stamps of places he visited and collected stamps of countries he visited on his travels. He told me that traveling was actually his biggest hobby, before (map) stamp collecting.

Al and Marilyn were members of the Travelers Century Club and have visited 167 countries. In his office in St. Petersburg where he worked as an attorney, he had a world map with pins indicating all the places he had visited.

His recent focus was on scientific research in philately and founded the *Institute for Analytical Philately*.

He was Vice President of the St. Petersburg Stamp Club.

Al is survived by his wife Marilyn, his four daughters and sons-in law and nine grandchildren. I will always remember his hospitality and generosity when we met and during my stays at their home in St. Petersburg, FL.

All members of the CPS thank Al for his service to the Society and express our condolences to Marilyn and her family.

Mark Honig

CartoPhilatelic Society News ~ David Wolfersberger.

NEW MEMBERS

Please welcome new members Mark Deakin, Tauranga, New Zealand; and Herschel Kanter, Arlington, Va.

ELECTIONS

The election of officers for the period of April 1, 2013 to March 31, 2016 has been completed and the results approved by the officers.

The following were elected:

President: Mark Honig
Vice President: David Wolfersberger
Secretary: Marybeth Sulkowski
Treasurer: Ed Vallery
European Representative: Volker Woesner
Asia/Pacific Representative: Brian Marshall
Representative at Large: Philip Coop

Martin Oakes will continue as Editor of *The New CartoPhilatelist* and Reese Plews will continue as Webmaster.

Thanks to all of the officers for their commitment of time and effort to help ensure the continued success of the CartoPhilatelic Society.

My thanks to all of those who served as officers and to all members who helped make my time as President enjoyable and fulfilling. I look forward to working with Mark as he takes over as President. I am sure that all members will provide the same level of support to Mark as was done for me.

ANOTHER NEW MAP ON STAMPS CATEGORY?

Several months ago Pierre Moise identified maps on ATM stamps as a category that had not been included on the Checklist. Recently Phil Coop mentioned that in an auction lot he purchased was a book about oleo-margarine state revenue stamps. Phil's reaction was who ever knew that there were such stamps and who would have thought there was a book devoted to this subject. Phil noted that several of the stamps had state maps on them.

As it turns out, Phil's find was literally the "tip of the iceberg." The collectors group The State Revenue Society publishes a catalog *The SRS State Revenue Stamps Catalog*. This catalog contains hundreds of pages and documents the multitude of state revenue stamps from a Beer (Cereal Beverage) (Alabama, 1937) to a Wyoming Public Service Commission Cab Card of 1993. And many of these revenue stamps do indeed include state maps. For example the Oleo-Margarine stamps from Minnesota 1963-74 have an outline map of that stamp; several Nebraska liquor stamps have a map; many Florida stamps for grapefruit and limes have excellent maps.

The question is whether these types of stamps (revenues) should be included in maps on stamps collection. And the answer, I suppose, is how broad you want to define the topic. I collect wine on stamps; in this topic Federal and state wine, beer and spirits revenue are included in the broad definition of wine on stamps, although they are not on the Checklist as there are too many to include and not all wine on stamps collectors make them part of their collection.

I think that it would be possible to put together an interesting collection of state revenue stamps with maps. Certainly a very specialized field but one that would demonstrate the vast range of tax collecting efforts. (Sorry for the political comment; I just couldn't pass it up.)

PATRON SAINTS OF CARTOGRAPHY AND MAPS

A few weeks as part of my wine on stamps collecting I began researching Patron Saints of wine and beer who have appeared on stamps. It turns out there are a number for each with some overlap. Some of them are St. Martin of Tours; John (the Apostle); St. Nicholas (yes THE St. Nicholas); St. Wenceslas; and others. Thus far I have found about 300 stamps with images of various patron saints of beer, wine, brewers, vintners, coopers, etc.

I wondered if there were any patron saints of mapmakers, cartographers, surveyors, or geographers. I found that St. Thomas (the Apostle) is the patron saint of surveyors but could not find others more directly related to maps. I found this website to be of particular use <http://saints.sqpn.com>. Does anyone know if there are any patron saints for any of these?

By the way, St. Gabriel the Archangel, is the patron saint of stamp collectors.

STAMP MAGAZINE UK

Those of you who provided the Society with email addresses received the following from me a few weeks ago. I reprint it here to be sure all members are aware of this interesting blog:

A couple of months ago Mark brought to my attention a blog by Adrian Keppel in the on-line stamp magazine, StampMagazine.co.uk, concerning subways on stamps. Several of the stamps Adrian pictured in this blog featured maps as well as subways; you may recall that trains, subways and maps on stamps are of particular interest to me.

Adrian and I exchanged emails and the result is that he prepared a blog about map stamps that can be found at <http://blog.stampmagazine.co.uk>. In this very interesting, well written blog he takes a look at map stamps from a point of view that I have not seen before. Check it out; I am sure you will find it very entertaining and useful.

Adrian has also established a maps on stamps forum. This forum can be found at :

<http://www.stampmagazine.co.uk/forums/postings.asp?th=80833>.

Adrian has thoughtfully provided links to the Society's web page on both the blog and the forum.

Please take a look at the blog and join the discussion on the forum. I would also appreciate any comments you might have.

CARTOPHILATELY IN THE PRESS

Gibbons Stamp Monthly, February 2013, had several map stamp related articles. In the "Where in the World" column Nicholas Pertwee discusses the 1988 Ghana 100ce surcharges. Among the surcharged issues discussed and illustrated is Sc 1096A, 100ce surcharge on Sc 892 which shows a *Cercocebus torquatus* (a mangabey monkey) in front of a large map of Ghana. An entire sheet of this stamp is shown along with some detailed views illustrating surcharge variations. In the column "Unissued Stamps of Queen Elizabeth II" David Horry discusses stamps from Montserrat that were not issued and illustrates the article with the great 3c map stamps (Sc 116 and 147). In 1964 the status of the country changed making the legend on the stamp "Map of the Colony" incorrect. A new set of stamps, including the 3c map stamp, were printed with the legend "Map of Montserrat" but this set was never issued.

In the same issue Peter Jennings discusses the late Allan Crawford and his Tristan da Cunha stamp collection. Among the stamps used to illustrate the article are several of the many excellent map stamps from this island nation. Another article mentions the auction of a block of four of the China "Whole Country is Red" (Sc 999A) in December 2012 in Hong Kong. In this case the block sold for \$815,392 (including buyer's premium).

Also in the February 2013 issue of *Gibbons Stamp Monthly* is an article about several rather famous British collectors. Two of the illustrations show the Fiji map stamps of 1940 (Sc 120 and 121), the first without the 180° and the second with it.

In a recent issue of *stampmagazine.co.uk* an article confirmed that Austria reissued the set of map stamps that had incorrect country borders. These errors were discussed in recent issues of *The New CartoPhilatelist*.

Thanks to Mark for letting me know about these articles.

The March 2013 issue of *American Philatelist* has several articles of interest. "Centenary of the First Airmail Flight Celebrated," by Kishore Yalamanchili is based on the stamps from India commemorating this event (Sc 2492-95, 2495a). All of these stamps are illustrated along with many others. Three other articles do not discuss map stamps but are nicely illustrated with maps. "The World's First Postal Code: The Ukrainian Index System," by Inger Kuzuch, has a general map of the Ukraine and a very detailed map (1930) showing all of the many postal codes or indexes. "Visiting the British Empire: Gold Coast," by Noel Davenhill is also illustrated with two maps, one nice outline map of Africa in 1913 and a 1913 "Map of the Gold Coast Colony."

Finally "Siberia of the Pacific? French Frigate Shoals," by Steve Pendleton, has two maps also, the first showing the Main Hawaiian Islands group and the Northwestern Hawaiian Islands which includes the French Frigate Shoals (located about in the middle of the northwestern chain); and a detailed map of the French Frigate Shoals. This article is also a good example of a high level of philatelic content as it is illustrated with many covers.

BOOKS

On the Map by Simon Garfield (Gotham Press, New York, 2013, 464 pages). This wide ranging book covers the basic history of cartography from the earliest days up to GPS and map mashups of today. It is not scholarly nor does Mr. Garfield mean for it to be. It is a well written, general overview of cartography. It is filled with little tidbits of information (for example, the Dutch dominate the world of digital maps) that make the book very interesting.

He covers some topics that are often not found in a book about cartography. For example there is a discussion on mapping the human brain and how that has progressed rapidly in recent years and what impact that might have on treating strokes, Alzheimer's and other illnesses. One chapter discusses how maps are used in games - as old as the board games Risk and Monopoly and as new as video games such as Skyrim and Grand Theft Auto. Even the mapping of Mars gets his attention and is quite entertaining.

A very interesting chapter discusses "The Biggest Map Dealer, the Biggest Map Thief." The former is W. Graham Arader III of New York City who claims his inventory of maps and atlases is worth between \$500 million and \$1 billion! Arader estimates there are probably only a handful of serious map collectors in the world, and that most collectors stop collecting when their walls get full and they don't want to take the next step to flat storage systems because of the space.

Garfield identifies Edward Smiley III as probably the world's biggest map thief. He spent 42 months in jail and was fined \$2 million for stealing maps from Harvard, Yale, the British Library and others. Smiley stole the maps by slicing them from books or atlases, thus not only getting the map but defacing the book as well.

There are numerous other tales, stories and history that Garfield covers with his easy to read and understand style. But the biggest criticism I have of the book relates to the illustrations. They are numerous but all black and white, not clear at all, and very small. I found I had to keep a magnifying glass handy to try to see on the map what Garfield was discussing with words.

If you want a detailed study of the history of cartography, this is not the book. If you would like a general overview, plus discussions of many topics usually not covered in a book about cartography you can spend enjoyable time with *On the Map*.

In *On the Map*, Garfield mentioned *World Geo-Graphic Atlas: A Composite of Man's Environment*, edited by Herbert Bayer (privately printed by Container Corporation of America, Chicago, 1953, 11"x16", 368 pages, leaves are gold edged). The description sounded interesting and I was fortunate that the St. Louis County Library had a copy so I was able to examine it. I believe this was an edition of 500 but I have not been able to verify that. I found two copies available on line, one for \$600, one for almost \$1100.

The second word of the title, "Geo-Graphic" is descriptive of the intent and execution of the atlas. The first part of the book presents page after page of data presented in a graphic form along with a map. For example one page has a world map with color highlighting areas that produce cotton (major and minor growing regions), hemp, and Manila hemp. Below that is a graphic that shows in chart form the amount of hemp made in each country. Who knew that in 1953 the USSR was the world's largest producer of hemp with Italy a distant second?

Other maps show the vegetation types in all the countries; major wind currents; major ocean currents; principal ocean shipping routes; important commercial air routes; all shown graphically on world maps. Many of these world maps are Goode's Homolosine Equal Area Projections.

The next section covers detailed information about each of the US states including a short history; geographical description; major cities; and a map showing land use such as for grain or cattle farming. Finally is the atlas itself with nicely prepared maps of the entire world, interestingly printed in Italy.

The effort to produce this atlas must have been enormous. It is somewhat sad to realize that after such an effort the data would be outdated almost as soon as printed. However, if you have a chance to review this atlas, do so. It is unlike any you are likely to come across.

Phil Coop also mentioned a book he found: *Boundaries, Possessions and Conflicts in South America*, by Gordon Ireland (Harvard University Press, Cambridge, MA, 1938). While quite old this book discusses the boundary conflicts in South America, many of which have been featured on stamps (see Bolivia Sc 1488 in the New Issues section of this issue). This topic has been the subject of several articles in *The New CartoPhilatelist* and *America on the Map*. This book provides excellent background

and historical perspective on these conflicts as well as numerous references to original source material.

Ireland also wrote a companion volume *Boundaries, Possessions and Conflicts in Central and North America and the Caribbean* (Harvard University Press, Cambridge, MA 1941). Both books were reprinted by Octagon Books in 1971.

AUCTIONS

By the time you read this a Vance auction will have already closed. It offered two lots totaling 143 examples of the 1898 Canadian map stamp. This will be a trove for some collector doing plating, color, and other variety studies.

AN ONLINE RESOURCE

For those not aware of it I would like to mention the on-line version of the multi-volume Michel catalogue. It is really an incredible resource. It is updated monthly and seems to be as up-to-date as the most recent issue of Michel's monthly magazine, *Rundschau*. The instructions are available in German, English and French but all of the catalogue data is German. There are search functions by key word, year of issue, Michel catalogue number, and of course country. The key words have to be entered in German but an on-line translation site such as Google Translate will help you find the right words. Of course like all on line searches a little imagination in coming up with key words helps. For example, I was searching for stamps about St. Matthew so I used the variations I could think of – Matthew, Matthias, Matteo, Mathis – to help expand the search.

Some of the stamps have full color images, many of the older issue do not. And as mentioned the descriptions are all in German but for those of us who do not read German a translation website makes short work of understanding the information.

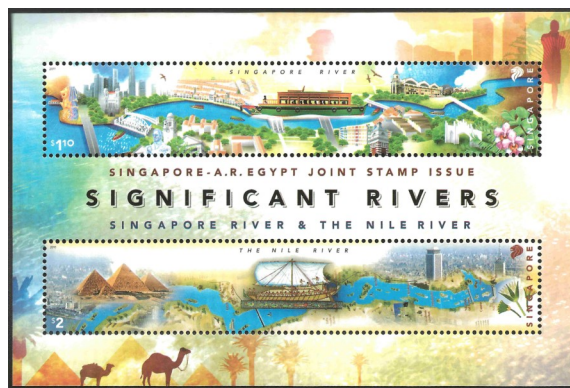
The only downside is the cost: The basic cost is €82.80/year; Premium Access adds €35.88/year. The Premium Access supposedly provides better images and search functions. At that site you can find more information as well as test the site. ■

The website for the Michel catalogue is :
https://ssl.philatelie.de/onlinecatalogue/index.php?l=EN&c=change_language&mwsid=mquvps270nljro82abd8hj0qrt96jp9v

New Issue Illustrations.



Russia Sc 7340.



Singapore Sc 1515.



Ghana Sc 2699.

NEW ISSUES

The Checklist Update has the complete list of new issues documented in the New Issues Update in the December 2012 to February 2013 issues of *Linn's Weekly Stamp News*. A few highlights:

Commemorating the 31st anniversary of the South African Development Community (SADC) **Angola** issued a set of four stamps plus a souvenir sheet (Sc 1366-70). The goals of the SADC are summarized in the legend on the stamp and sheet: "Consolidate the foundations of regional integration for infrastructure development, facilitate trade, and economic liberalization." Each stamp and the margin of the sheet have the same map of Africa with the 15 SADC states outlined and identified. Even though shown on the map, Madagascar is currently suspended from membership in the SADC because of the 2009 coup although progress is being made to schedule elections of a new government that could lead to it being reinstated.

On May 6, 1937 one of the most famous aircraft disasters in history occurred when Luftschiff Zeppelin #129 Hindenburg crashed while docking in Lakehurst, NJ. The event is noted on a triangular stamp and souvenir sheet from **Ghana** (Sc 2698-99). The S/S has part of a nice world map while the stamp shows a part of Europe. After successful commercial operation in 1936 when the Hindenburg made 17 transatlantic flights, the disaster at Lakehurst occurred during its second flight of the 1937 season. It has never been determined the source that ignited the highly flammable hydrogen in the airship's gas bag; theories range from lightning to sabotage. Collecting Hindenburg flight covers is a very popular subject.

Curaçao, the small but highly popular tourist destination island in the Caribbean, issued a souvenir sheet (Sc 650) of four stamps showing the different types of rail transportation that existed there. The island's first railway was an industrial line built in 1874 to transport phosphate from Tafelberg (Table Mountain) to Fuikbaai on the southeast coast. This is shown on the two upper stamps of the sheet. In 1887 a 2 km passenger line was opened in the Punda and Otrabanda parts of the main city of Willemstad. Two small (perhaps 12 passenger) horse drawn trams went into service (lower left stamp). These were in service until about 1911 when two gasoline powered trams were placed in service (lower right stamp). The final journey on the tram occurred in July 1920, ending rail service in Curaçao. A good map of the part of Willemstad served by the tram is on the sheet margin. Part of the tram route is shown by the road in red on the left and the road top right that is slightly darker than the other roads. (See <http://www.tramz.com/cw/cw.html> for more information.)

Another railway/map related souvenir sheet was issued by **Azerbaijan** (Sc 1007). The two stamps on the sheet have a map of Azerbaijan and parts of Turkey and Georgia. The map shows the main train route connecting Tbilisi (Georgia) with Baku (Azerbaijan). But this sheet was issued to feature the soon to be completed link between Kars (Turkey) and Akhalkalaki, there connecting to an existing railway to Tbilisi. There was a link between Kars and Tbilisi that went through Armenia via the Armenian city of Gyumri but Turkey closed its borders with

Armenia in support of a clash between Armenia and Azerbaijan, thus necessitating the construction of this new railway. Branch lines off of the main line in Azerbaijan are also shown on the map.

A third rail/map sheet comes from **Belarus** (Sc 834). This sheet of 5 stamps (same design) and 10 labels (all different) shows images of various rail engines that had been and are being used in the country over the past 150 years. In the background of the stamps and labels are maps of railroad routes in Belarus. While small and faint the maps are rather detailed.

The War of 1812 had a major impact on the United States, Great Britain, and Canada, at the time a British colony. **Canada** and **Guernsey** (Sc 2455-56 and 1172a-b respectively) issued a souvenir sheet commemorating the War. The sheet in particular shows Guernesymen Sir Isaac Brock and Native American Tecumseh who combined forces to repel an ill-planned invasion of Canada by United States troops who were intent on expanding the US territorial area. On the margin is an 1800 map of Upper Canada, with lots of detail and the boundary of the area clearly marked in red. The War of 1812 did not end until the Treaty of Ghent in 1815, ending what some historians say was the 50 year war of United States independence – from the imposition of the Sugar and Currency Acts of 1764 to the end of the War of 1812.

The **People's Republic of China** issued four stamps (Sc 4027a-d) for the Silk Road. This strip of four stamps shows the Silk Road with a few key points identified by name or with circles indicating junctions. The Silk Road was a major trade route from Africa, Europe to China and other Asian nations, extending some 6500 miles. From what I have been able to determine it was used from the 1st century BC to the 15th century AD. According to the Chinese post website, the stamps are described:

- 4-1: Millennia - old Capital
- 4-2: The Magnificent Pass in the Desert
- 4-3: A Mysterious Kingdom
- 4-4: Extraordinary Scenery of the Western Regions

Finally, **Bolivia** issued a very nice map stamp (Sc 1448) commemorating the War of the Pacific fought with Chile, with Peru also engaging against Chile. The dispute centered on land that Bolivia claimed but on which it allowed a Chilean company to mine saltpeter. Disregarding an earlier treaty which Bolivian leaders said was not valid because the National Assembly had not approved, in 1878 Bolivia increased the tax on the saltpeter shipped. Chile immediately sent their navy to capture several ports in both Bolivia and Peru, and then launched a land assault. Bolivia was basically defeated by December 1879. The war resulted in Bolivia losing the Littoral region, some 120,000 km² of land and 400 km of coastline, thus causing it to be landlocked. The map on the stamp shows the three countries, that Bolivia lost to Chile, and the major seaports captured by Chile. ■

MAPS ON STAMPS CHECKLIST

Linn's December 2012 to February 2013 Linn's Special Edition Updates

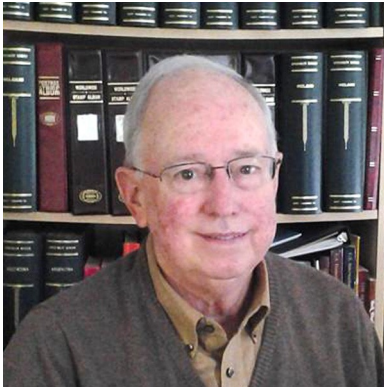
Grade O not included but will be on the next Checklist update.

Date	Country	Issue	Scott	Format	Grade	Coverage	Value	Michel	SG
2011	Angola	South African Development Community	1366		A	Africa with member countries shown and identified	50k	1848	TBD
2011	Angola	South African Development Community	1367		A	Africa with member countries shown and identified	50k	1848	TBD
2011	Angola	South African Development Community	1368		A	Africa with member countries shown and identified	50k	1850	TBD
2011	Angola	South African Development Community	1369		A	Africa with member countries shown and identified	50k	1851	TBD
2011	Angola	South African Development Community	1370	S/S	A	Africa with member countries shown and identified. Same map on stamp and sheet margin	150k	B133	TBD
2012	Argentina	Antarctica	2659		A	Antarctica (ship breaking up ice)	\$5	TBD	TBD
2012	Australia	Road Trip	3766a	S/S of 5, 3763-66	A	Road map on margin	3x60c, \$1.65, \$2.35	B148	TBD
2012	Australia	Australia Zoo - crocodile	3782	Gutter strip. .	A	Australia on gutter	60c	3822	TBD
2012	Azerbaijan	Azermarka 20th anniv.	992	S/S	A	Nice outline of Azerbaijan	1m	B115	MS868
2012	Azerbaijan	National Flag	999	Stamp + label	A	Azerbaijan on label	60g	919	874
2012	Azerbaijan	Railroad	1007	S/S	A	Railroad routes on stamps and margin	60q	B121	MS881
2012	Belarus	Trains	834	Sheet of 5 + 10 labels	A	Train routes on stamps and labels	5100r	927	925
2011	Bolivia	Cooperation with Cuba	1461		A	People filling map of Bolivia	2.50B	1837	1906
2012	Bolivia	War of the Pacific	1488		A	Bolivia with Litoral region shown	\$5.00	1864	1932
2012	Bolivia	Day of the Internet	1495		A	Americas	1.00B	TBD	1940
2012	Bolivia	Day of the Internet	1497		A	More or less "hidden" map Bolivia in center of stamp	3.00B	TBD	1942
2011	Brazil	Federal Savings Bank 150th anniv.	3161		A	Brazil	1.05r	3882	TBD
2011	Burundi	Famous People	995	S/S of 4, 995a-d	A	Part of Africa on margin	2x1020fr, 2x3000fr	B185	TBD
2012	Burundi	Famous People - Amerigo Vespucci	1071	S/S of 4, 1071a-d	OC	Vespucci on three stamps	2x1070fr, 2x5000fr	2396-99	TBD
2012	Burundi	Centenary flight of Henri Salmel, London to Paris	1075	S/S of 4. 1075a-d	A	England and part of Europe on margin	3x107fr, 1x5000fr	2416-19	TBD
2012	Burundi	Famous People - Amerigo Vespucci	1090	S/S	OC	Vespucci on stamp and margin	7500fr	B212	TBD
2012	Burundi	Centenary flight of Henri Salmel, London to Paris	1094	S/S	A	England and part of Europe on margin	7500fr	B216	TBD
2011	Cameroun	AIDS	973		A	Africa with the countries shown	250fr	TBD	TBD
2012	Canada	War of 1812	2554-55	Sheet of 16, joint issue with Guernsey (See Sc 1172a-b)	AR	Old map of Lake Erie and Lake Ontario on margin - different from Guernsey sheet.	1st (61c)	2845-46	2872-73
2012	China (Taiwan)	Inauguratuion of President and Vice President	4049d		A	Taiwan, stylized globe	\$12	3689	TBD
2012	China (Taiwan)	Inauguratuion of President and Vice President	4050	S/S	A	Taiwan on margen	\$32	B168	TBD
2012	China, People's Republic	Asia-Pacific Postal Union 50th anniv	3988		A	Asia/Pacific area in background	\$1.20	4336	TBD

Date	Country	Issue	Scott	Format	Grade	Coverage	Value	Michel	SG
2012	China, People's Republic	Silk Road	4027	Sheet of 8 (2x4 different designs). Stamps also issued in sheets of 12 of each design.	AR	Route of Silk Road across all 4 stamps	1.20 y each	4378-81	5677-80
2011	Cuba	Radio Havana	5203		A	US, Central America, northern part of South America, Pacific, Cuba, part of western Africa. (Africa is not located properly - too close to Western Hemisphere, no Caribbean Islands shown except Cuba.)	2.05p	5490	TBD
2011	Cuba	Animals	5242		A	Arctic	5c	5530	TBD
2011	Cuba	Animals	5243		A	North America	10c	5531	TBD
2011	Cuba	Animals	5244		A	South America	15c	5532	TBD
2011	Cuba	Animals	5245		A	Europe	50c	5533	TBD
2011	Cuba	Animals	5246		A	East Asia	65c	5534	TBD
2011	Cuba	Animals	5247		A	Australia	85c	5535	TBD
2011	Cuba	Animals	5248	S/S	A	Africa	1p	B287	TBD
2012	Curaçao	Railways in Curaçao	650	S/S of 4, 650a-d	A	Map on railways on margin	200c to 350c	B6	TBD
2011	Cyprus	Lighthouse	RA28A b	Booklet, 6 each 1153A and RA28A	A	Cyprus coast showing location of Cape Greco lighthouse	43c	1213 note	Not listed
2011	Egypt	Nile and Singapore Rivers	2080	Block of 6, 2080a-g	A	2080a-c form continuous view of Nile River; 2080d-f form continuous view of Singapore River. Join issue with Singapore (Sc 1513-15)	2x30p, 4x£2.50	1934-39	2191-96
2012	Estonia	Personalized stamp	698	Stamp can purchased with map of island or personalized.	A	Saaremaa Island	45c	724	677
2012	Estonia	Lighthouses - Kasmu	711		A	Great map of region with location of lighthouse highlighted	45c	736	690
2012	Estonia	Railroad Bridges	714	S/S of 3; Joint with Latvia and Lithuania	A	Europe on margin with the three countries highlighted	€ 1	B34	MS693
2012	French Southern & Antarctic Center	National Space Studies	468a		A	Antarctica	60c	782	680
2012	Ghana	Hindenburg Disaster, 75th anniv.	2698	Triangle stamp; also mini-sheet of 4	A	Part of Europe	2ce	TBD	MS3800
2012	Ghana	Hindenburg Disaster, 75th anniv.	2699	S/S	A	Partial west and east hemispheres on margin with parts of Europe, Africa and North America shown	5ce	TBD	MS3801
2012	Great Britain (Guernsey)	War of 1812	1172a-b	Sheet of 10, joint issue with Canada (See Sc 2554-55)	AR	Old map of Lake Erie and Lake Ontario on margin - different from Canadian sheet.	£1	1386-87	1427-28

Date	Country	Issue	Scott	Format	Grade	Coverage	Value	Michel	SG
2012	Grenada	Titanic	3847	S/S	A	Map of Atlantic showing route and location of wreckage	\$9	B810	MS5560
2011	Guatemala	UPAEP	644		A	Western Hemisphere and part of Eastern Hemisphere	5q	1553	TBD
2012	Guyana ?	Revenue - map	4135	#506 surcharged	A	Guyana	\$20 on 40c on 2c	TBD	TBD
2010	Hungary	World Cup	4160		A	World map on soccer ball	325ft	5472	5259
2012	Lithuania	Battle of Blue Waters 650th anniv.	981		AR	Battle map	2.45l	1111	1074
2012	Marshall Islands	WWII - US attack of Attu Island	1035e	Part of sheet of 10, 1035a-j + 10 labels	A	Map of area	45c	TBD	2844
2012	Marshall Islands	WWII - Pacific war area	1035f	Part of sheet of 10, 1035a-j + 10 labels	A	Map of war area in Pacific Ocean	45c	TBD	2845
2012	Mexico	Battle of Puebla 150th anniv.	2782	S/S of 3, 2782a-c	A	France, Mexico on 2782a	7p	TBD	TBD
2012	Mongolia	Antarctic Explorers - von Bellingshausen and Lazarev	2746	S/S of 2, 2746a-b	A	Antarctica on margin	800t each	B405	TBD
2012	Romania	Timisoara 800 years	5353		O	View of castle layout	5l	6614	7225
2012	Romania	Timisoara 800 years	5355b	S/S	A	Castle plan on margin	14.50l	B527	MS7228
2012	Romania	Europa - Visit Romania	5356-57	Sheet of 6 of 5356 = 5356a; Sheet of 6 of 5357 = 5357a	A	Large outline map of Romania on each	1.40l, 8.10l	6617-18	7229-30
2012	Romania	Europa - Visit Romania	5357a-b	S/S of 4, 2 each 5356 and 5357. 5357a and b differ in layout of stamps on sheet only	A	Large outline map of Romania on each	1.40l, 8.10l	B529 I and B529 II	Not listed
2012	Russia	M. Raskova, aviator, cent of birth	7340		A	Map of flight route in background	15p	1799	TBD
2012	Russia	Izborsk 1150 yr anniversary	7373	S/S	AR	Izborsk region	30k	B167	TBD
2012	Russia	Record flight over North Pole - 75th anniv.	7374		A	Map of route over Arctic	13p	1839	TBD
2012	Russia	Marathon - Summer Olympics London 2012	7378	S/S (2 - one is a color variation)	A	Route of marathon shown on city map	50p	B169	TBD
2012	Russia	Rostov city 1150th anniv.	7388	S/S	AR	Map of Rostov on stamp	30r	B170	TBD
2011	Saint Maarten	Map of St. Maarten	7	Sheet of 6, 2 each 7a-c	A	45c: Map of West Indies; 111c: St. Maarten; 350c: Globe w/South America	45c, 111c, 350c	TBD	TBD
2011	Singapore	Singapore River	1513	Joint issue with Egypt (Sc 2080d-f)	A	Singapore River view	\$1.10	2053	2026
2011	Singapore	Nile River	1514	Joint issue with Egypt (Sc 2080a-c)	A	Nile River	\$2	2054	2027
2011	Singapore	Singapore River and Nile River	1515	S/S of 2, 1513-14	A	As above	\$1.10, \$2	B158	MS2029
2012	Tonga	Titanic	1178	Sheet of 4, 1878a-d	A	Titantic's route, including crash site, from Europe across Atlantic on label on sheet	3.40pa each	1766-69	TBD

David Wolfersberger, a Short Biography.



David is retiring as the President of the CartoPhilatelic Society, so it seems appropriate to share a little background information about him. We would like to thank David for his guidance and encouragement, without which the society would be less cohesive. As you know he maintains our check list and will continue to do this challenging task. He also researches and has written many knowledgeable articles for our journal.

David started stamp collecting when he was 8 or 9 years old when a family friend gave him a little paper album, a packet of stamps and hinges that she acquired by sending in some bottle caps from Nehi soda, a once popular soft drink. He must have enjoyed it because he then purchased a new, larger album and became a frequent visitor to the Famous-Barr Department Store stamp counter and the many stamp dealers in downtown St. Louis, as well as being a

regular penny approval customer of H.E. Harris and Jamestown Stamps. But as often happens, the collection was put aside when he was in high school and college and didn't begin collecting again until a few years after starting work.

At first David collected only US stamps but over the years added several other country collections. In the late 1990's he realized that it was becoming very expensive to get the stamps needed for the country collections. Having had a long time interest in maps he thought *maps on stamps* would be an interesting subject. Eventually he contacted Lillian Kent who had maintained the Checklist and funds when the Carto-Philatelists became dormant. This led to a contact from Alf Jordan, and the re-formation of the CartoPhilatelic Society.

In addition to maps on stamps David collects *wine on stamps* and continues to add new issues to some country collections. The biggest challenge is to organize and catalogue his *maps on stamps* collection, which was up to date at one time but in the last few years, has got out of hand.

David was born in St. Louis, MO in 1945, and has lived most of his life in that area, with a few years in Charleston, WV and New Orleans, LA. He graduated as a chemical engineer and spent his career in the chemical industry; the last 26 years with Monsanto.

He and his wife Kathleen have been married for almost 46 years. They have three children and two grandsons. His other hobbies include golf, reading and traveling to visit the family.

As David "retires" we would like to welcome Mark Honig to the position as the new President of our Society and know he will contribute to its continued success. ■

(FSAT Continued from p. 7)



Fig. 9, Sc 398

thus forming a lake in the crater. Several other areas on the island's coast are identified, one of which was probably the site of the cannery (Figure 10, Sc 211c). I did find one reference that stated the lobster cannery was on the west coast of the island but I could not confirm that.



Fig. 10, Sc 211c

To be continued.

Date	Country	Issue	Scott	Format	Grade	Coverage	Value	Michel	SG
2012	Tonga	Titanic	1179	S/S of 2, 1879a-b	A	Titanic's route, including crash site, from Europe across Atlantic on label on sheet.	45s each	B53	TBD
2012	Tristan da Cunha	Volcano	961-64, 965 (S/S)		A	Satellite photo of island	25p, 35p, 95p, £1.10, £2	1095-98, B63	TBD
2012	Turkey	Equal Opportunity of women and men	3288		A	Globe	10k	3933	TBD
2012	Turkey	Equal Opportunity of women and men	3290		A	Globe	2l	3935	TBD
2012	Turkey	Turkish Olympics	3310	S/S of 4, 3310a-d	O	Globe on 3310b	1L	B86	TBD
2011	Ukraine	Natural Wonder of Ukraine	840	S/S of 7, 840a-g	A	Ukraine on margin	2.20h each	B91	TBD
2012	Viet Nam	Asia Pacific Postal Union 50th anniv.	3439		A	Asia	3000d	3602	2868



Collectors of Maps on stamps

Editor: Martin Oakes
 2100 Oriole Drive
 Freeport, IL 61032, USA
 Email: martinoakes@aeroinc.net



www.mapsonstamps.com

ISSN 1930-2053

Email addresses may be found on our website.

The CartoPhilatelic Society is a nonprofit philatelic organization with a world-wide membership of collectors of maps on stamps. Founded in 1955, the organization was rejuvenated in 2003. We are associated with the American Philatelic Society and the American Topical Association. Annual dues are US\$18 for residents of North America, and US\$20 for members residing elsewhere for hard copy, and US\$15 for PDF everywhere. You are cordially invited to join us and share our enthusiasm for maps on stamps. A membership application may be found on our website or obtained from the Secretary. Please send your application and dues to the Treasurer.

President	Mark Honig	Kluiverkamp 28	1541 XZ Koog aan de Zaan, Netherlands
Vice President & Checklist Editor	David Wolfersberger	768 Chain Ridge Road	St. Louis, MO 63122
Secretary	Marybeth Sulkowski	Unit 209 1117 Douglas Ave.	North Providence RI 02904
Treasurer	Ed Vallery	5 Thompson Lane	Durham, NH 03824-3022
European Rep.	Volker Woesner	Sandkoppel 10	24119 Kronshagen Germany
Rep. at Large	Phil Coop	4350 Tuckahoe Road	Memphis, TN 38117
Asia/Pacific Rep.	Brian Marshall	86 Shackleton Road	Mt. Eden, Auckland, 1024, NZ
Webmaster	Reese Plews		rplews@tkb.att.ne.jp

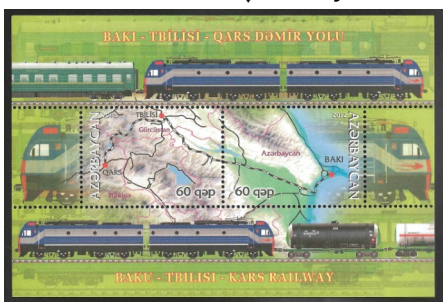
© 2013 The CartoPhilatelic Society. All rights reserved. Reproduction prohibited without express permission of Editor or Author.

New Issue Illustrations.



Angola Sc 1370.

↓ Azerbaijan Sc 992.



Argentina Sc 2659.



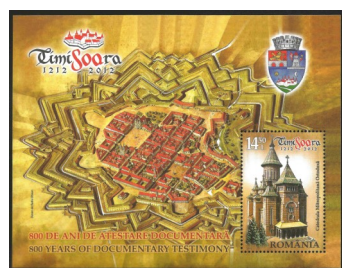
Bolivia Sc 1488.



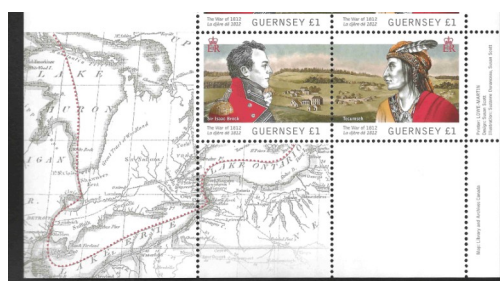
China (PRC) Sc 4027.



Belarus Sc 834.



Romania Sc 5355b



Guernsey Sc 1172.



Curacao Sc 650.