

The New CartoPhilatelist

No. 61 April, 2018

New_CartoPhilatelist_n61_APR_2018.pdf

ISSN 1930-2053

Journal of the CartoPhilatelic Society

©The CartoPhilatelic Society

All Rights Reserved

No Unauthorized Reproduction, Transcription, or Resale

Without the Written Permission of the President,

CartoPhilatelic Society

For Contact Information:

mapsonstamps.org

cartophilatelicsociety.org



The Costa Rica - Panama Border Dispute

Ap Koopman

In the first quarter of the 19th century most of Latin America gained independence from Spain. Since then about 40 serious border disputes have occurred in Latin America.

Some disputes lead to armed violence, but many were settled by direct negotiations between the countries concerned, by arbitration or by international institutions such as the International Court of Justice. By the end of the 20th century, most were resolved.

As part of the Spanish possessions in Latin America, the Republic of "Gran Colombia" had a short existence (1819-1831). It included what is today Colombia, Venezuela, Ecuador, Panama, Costa Rica, Peru, Brazil and small parts of Guyana.



Fig. 1 - Venezuela, 1969, Mi 1816. Map commemorating the 150th anniversary of the creation of 'Gran Colombia'.

The break-up of "Gran Colombia" led to disagreements, conflicts and even wars, between Costa Rica and Panama. Multiple attempts were made to solve these disputes which show as interesting changes in the stamps of Colombia, Panama and the Canal Zone



Fig. 2 - Costa Rica, Mi 117. Map of Costa Rica showing its borders with Nicaragua, top and Panama, bottom.

From 1886 until 1903 Panama was a province of the 'Republic of Colombia'. In November 1903 it became independent, and promptly signed a treaty with the United States allowing for the construction of a canal and US sovereignty over a strip of land on either side of the structure (the Panama Canal Zone).



Fig. 3 - Panama, 1895, Mi 16. Issued by Columbia for use in the Department of Panama with a different currency.

Fig. 4 - Panama, 1905 Mi 64. Issued to mark the second anniversary of Panama's independence.



Fig. 5 - Panama, 1906 Mi 65. One of many overprints. This is Mi 16 with a bar over Columbia overprinted 1ct in red.



Inside this issue:

Costa Rica/Panama border dispute	1
Virginia Bear-Deer Revenue Stamps	4
Australian Overseas Territories (concl.)	5
Clipperton Island	6
Island to Island	7

Special points of interest:

Editor's Notes	8
New Issues	9
General Notes	16



Fig. 6 - Canal Zone/ Panama, 1906, Mi 15, bars and text in black

The Canal Zone is a strip of land 10 miles wide extending through the center of Panama, between the Atlantic and Pacific Oceans. The zone was leased in perpetuity to the United States for a cash payment of \$10 million dollars and a yearly rental. Treaties between the two countries provided for joint jurisdiction with Panama handling the postal service. At the end of 1999 the canal in its entirety reverted to Panama.

Costa Rica versus Panama

The border, approximately 330 km long, between Panama and Costa Rica, runs from the Caribbean Sea to the Pacific coast, through the Cordillera Central.

An 1896 treaty sort to establish a border between Columbia and Costa Rica, however this was open to interpretation. In 1900, acting as arbitrator, the French President modified this border but neither party was satisfied. After independence, Panama inherited the dispute.

In 1910 the USA attempted to mediate in the border dispute (now) between Costa Rica and Panama. The Coto district was ceded to Costa Rica and a small parcel, Bocas del Toro to Panama. Panama was not happy with the decision and did not vacate the Coto district.



Fig. 7 - Boundary Map.

In 1921, Costa Rica moved troops into the contested area starting the Coto War. Panama retaliated taking prisoners but was severely limited by a lack of armaments and ammunition.

Thanks to the intervention of US officials, the Panamanian troops withdrew from the area. In the end Costa Rica 'won' the Coto and west bank of the Sixaola River basin and Panama 'recovered' Bocas del Toro.

Costa Rica and Panama gave a bi-national Commission the task of reviewing their border line, based on complaints and worries from people on both sides of the border and those who were unsure of which country they were in.

Eventually, in 1941, both parties came to a 'final' arrangement over the border line, which was acceptable to both.

The **Echandi-Fernandez Treaty** defined the 'current' border as shown in Fig. 7. See footnote for route.

As a result of this agreement both countries issued stamps.

In 1941 Costa Rica issued a series of seven stamps (Mi. 269-275) with an overprint. Fig.8.



Fig. 8 - Costa Rica, 1941, Mi 270. Issued to commemorate settlement of the border dispute. Original stamp Mi 168 – 20 ct with overprint: 'Mayo 1941, Tratado Limitrofe Costa Rica – Panamá, quince centimos'.

Panama produced a stamp with flags of both countries in 1942. Fig. 9. In 1944 Costa Rica issued four stamps (Mi 356-359) with an overprint. Fig. 10.



Fig. 9 - Panama, 1942, Mi 306. Marking the border agreement. Flags of Panama and Costa Rica (R).

Fig. 10 - Costa Rica Mi 359. To commemorate settlement of the border dispute. This is Mi 168 with overprint 'La entrevista de los Presidentes De la Guardia y Picado contribuirá a afianzar la unidad Continental. 18 setiembre 1944'.



On the 50th anniversary of a settlement (1991), both Costa Rica and Panama issued a strip of 3 stamps to commemorate a solution to the border dispute. Fig. 11 & 12.



Fig. 11 - Costa Rica, 1991, Mi 1386/88. Strip of 3 stamps, flags, presidents Calderon and Arias and to the right the border Costa Rica with Panama



Fig. 12 - Panama, 1991, Mi 1724/26. Strip of 3 stamps, shaking hands and flags, map with left Costa Rica, green; right, provinces of Panama (colored), Precedents and flags

The border agreed upon in 1941 is not the same today. The Sixaola River flooded. This changed the natural channel that served as the border, causing confusion among residents, traders and farmers, making them uncomfortable, not knowing in which territory they technically and legally are living and working. In other areas gas stations or a commercial development might act as milestones to mark the border, but these are often lost in a changing market environment.

Even with a new agreement in 2009, the border is still very fragile. This has led to strange traffic problems and more serious issues such as smuggling.

The two countries still share an interesting border; for example the Sixaola-Guabito International Bridge which is a rickety old bridge with moving wooden planks. This former railroad bridge has been bypassed by a new bridge. The old bridge is just used by pedestrians



Fig. 13 – Bridge crossing the Sixaola River basin at the border near the Caribbean Sea.

Both countries hope to come to a new revision that takes into consideration the interest of traders and properties on the line. The review will include the entire border so each sector will be clearly defined.

During meetings in February 2015, Panama and Costa Rica reached an agreement on beefing up security cooperation along their 330-kilometer shared border.

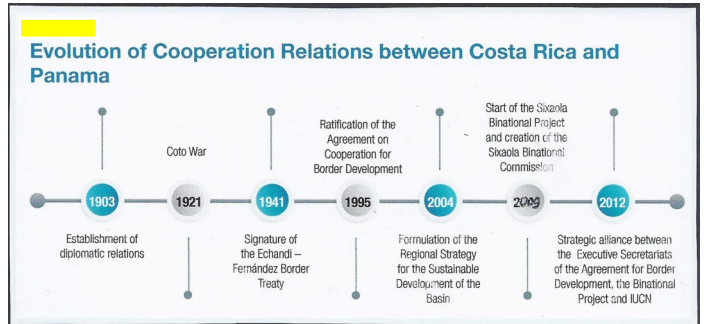


Fig. 14 - Evolution of cooperation between Costa Rica and Panama.

There are other questions to solve, like the maritime limits with Panama, Colombia and others, but that is another story. ■

Sources:

- Int. Boundary Study No 156 – July 2, 1976, Costa Rica – Panama, US Department of State
- Jorge. I. Dominguez, ‘Boundary disputes in Latin America’, Peace Works No. 50, United States Institute of Peace, 2003
- The Cartophilatelic Society, ‘America on the map’, 2007
- Internet sites, such as: www.legal.un.org; www.iom.int, www.iucn.org, www.jstor.org

The Current Border.

- It begins at the mouth of the Sixaola River in the Caribbean Sea, following the valley of this river to its influx in the Yorkin River.
- Thence continuing upriver on the bottom of the river valley up to the parallel in the length 9°30'N.
- Then continuing in a straight line to the meridian at 82° 58'10"W.
- From there it continues south along this meridian to the summit of the Cordillera de Talamanca, which separates the Caribbean waters and Pacific waters.
- It follows this ridge to Mount Pano where it meets the ridge that divides the waters of the tributaries of the Golfo Dulce and the Charco Azul Bay.
- From here it follows the ridge until the end of Punta Burica on the Pacific Ocean.

Virginia Bear-Deer Damage Revenue Stamps

Jeff Lough

In the mountains of southwestern Virginia bear and deer have encroached upon and destroyed residential, farm, and commercial properties. While common law does not require states or local governments to pay for such damages, some states have made provision for the reimbursement of such harm. Virginia has had such a program allowing individual counties to raise money to provide payment for losses due to the activities of white-tailed deer and black bears [1]. Laws passed by the legislature of the Commonwealth of Virginia in 1956 and 1960 permitted 33 of the 96 Virginia counties the privilege of having a “deer-bear damage stamp” to raise funds to reimburse property owners. By 1961, 14 counties had issued such stamps. All hunters in the county were required to purchase the one dollar stamps. Many counties declined participation because landowners themselves would have had to purchase a stamp when hunting on their own lands. The stamps could be purchased only from the Clerk of the Court in the individual county and the stamps were valid only within that county [2].

The funds raised from sale of the stamps paid for damage to gardens, pastures, orchards, field crops, sheep, cattle, hogs, and bee hives. The total amount that could be paid out in a year in any given county was generally limited to the net amount accrued in the special fund from the sale of the stamps during the license year in which the damage occurred. The value of the damages were determined by the game warden and the landowner on whose property the damage occurred. The sale of the bear-deer damage stamps increased until 1962 then decreased. The last available records indicate that in 1992 four counties participated in this program.

Several of the counties issued stamps with maps. Bath (Fig. 1 - Bath County stamp) was one of the first counties to issue a map stamp. The Botetourt County stamp (Fig 2 - Botetourt County stamp) illustrates how these stamps were canceled, in

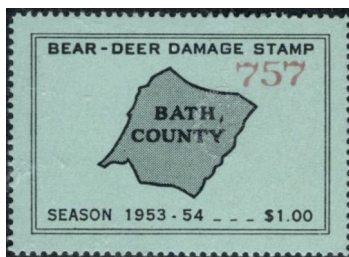


Fig. 1 - Bath County.

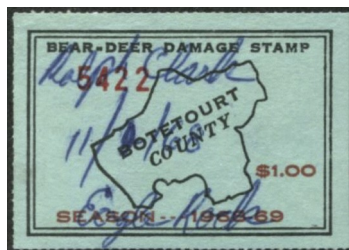


Fig. 2 - Botetourt County.

this case with the Court Clerk's signature, the date, and the name of the city. Other counties using this type of stamp included Washington (Fig. 3 - Washington County stamp), Grayson (Fig. 4 - Grayson County stamp), Tazewell (Fig. 5 - Tazewell County stamp), Scott (Fig. 6 - Scott County stamp), and Warren (Fig. 7 - Warren County stamp). New stamps were issued each year. They varied in color from year to year.



Fig. 3 - Washington County.



Fig. 4 - Grayson County stamp.



Fig. 5 - Tazewell County.

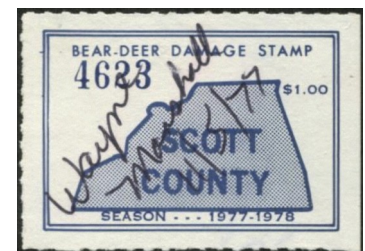


Fig. 6 - Scott County.

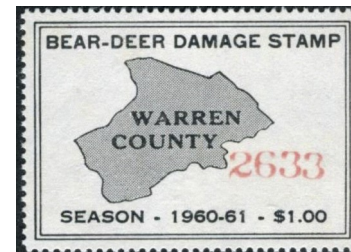


Fig. 7 - Warren County.

Stamps were assigned a specific overprinted number. Jan R. Wooton compiled a couple of reference books which provide a catalogue numbering system. [3]. ■

Endnotes

[1] Wagner, Kimberly K., Robert H. Schmidt, and Michel R. Conover. "Compensation programs for wildlife damage in North America." (1997). USDA National Wildlife Research Center - Staff Publications. 829. http://digitalcommons.unl.edu/icwdm_usdanwrc/829.

[2] Engle, J. W. An analysis of the deer-bear damage stamp funds in Virginia." (1963) *Proceedings of the Annual Conference of the Southeast Association of Game and Fish Commissions*. 17: 100 - 105.

[3] Wooton, Jan R. *State Pictorial Hunting Stamps: A guide with Values*. (Talking Rock, GA: J.R. Wooton, 1996) and Jan R. Wooton. *The Streamside Catalogue of Fish and Game Stamps*. (Tate, GA: Streamside Press, 2001).

Map Stamps from Australia's Overseas Territories, Part 3 ~ Norfolk Island [conclusion].

Barry J. Garner

Another stamp featuring exploration was issued in 2005 as part of a different series honouring Pacific explorers (Figure 19). It presents an early map of the Pacific on a projection that appears to be centered on the Pacific islands. Lastly, Figure 20 was issued in 1987 to commemorate the Bicentenary of the settlement of Norfolk Island and the visit of the French navigator La Perouse while *en route* to Botany Bay, Australia. The stamp, features La Perouse getting his instructions from King Louis XVI while they study a map (of the Pacific?). Although differing in its detail, the content of the stamp bears a striking resemblance to that in a painting by N.A. Monsiau, 1817, which hangs in the *Chateau de Versailles* outside Paris and on which the stamp is probably based. A reproduction of the painting is shown at the end of this article courtesy of Wikipedia. The legacy of La Perouse's visit to Australia is discussed in *TCNP 52*, January 2016, 7.



Fig. 19 - SG MS 912.



Fig. 20 - SG 433.

Two stamps have been issued featuring notable shipwrecks – one of *HMS Pandora* off the Australian coast and the other, that of *HMS Sirius* off the coast of Norfolk Island itself. *HMS Pandora* was wrecked on 8 May 1791 on the Great Barrier Reef off Queensland's Northern coast while searching for *HMS Bounty* and the remaining mutineers but without finding any trace of them. Figure 21, one of a series of stamps issued in 1991 marking the history of Norfolk Islanders, shows the location on the Great Barrier Reef where the vessel sank.

More significant from an historical perspective, however, was the loss of *HMS Sirius* in March 1790. It had been the flagship of the First Fleet that brought the convicts, marines, and free settlers to establish the penal colony at Sydney Cove in 1788. The *Sirius* was on her way to Cape Town to procure food supplies for the struggling new penal colony when it floundered

on a reef adjacent to Kingston. Over 3,000 artefacts have since been recovered from the wreck at the five sites shown on the chart on Figure 22, most of which are now displayed in the Norfolk Island Museum.

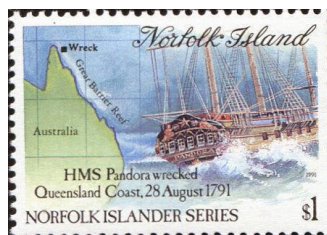


Fig. 21 - SG 482.

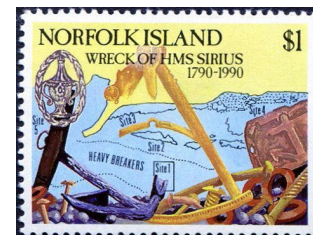


Fig. 22 SG 317.

Lastly, stamps commemorating achievements or anniversaries include Figure 23 issued in 1983 which shows a diagrammatic representation of the route of the ANZCAN submarine telephone cable linking Australia and New Zealand with Canada, which had a landing on Norfolk Island, and Figure 24 issued in 1992 to commemorate the 500th Anniversary of the discovery of America, showing Columbus with a globe. Finally, Figures 25-27 commemorate the 50th anniversary of significant events of WWII in the Pacific – the battles of the Coral Sea and Midway, and the landing on Guadalcanal. During WWII, Norfolk Island was fortunately too remote to come under attack from Japanese forces, even though New Zealand troops were based there and it was a strategic refuelling stop on air routes between New Zealand, Australia, and the Solomon Islands.



Fig. 23 - SG 317.

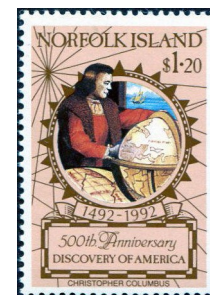


Fig. 24 - SG 527.



Fig. 25 - SG 528.



Fig. 26 - SG 531.

Continued on P.8.

Clipperton Island

(French: Île de La Passion or Île de Clipperton)
 Ap Koopman

Île de la Passion (Clipperton), an uninhabited atoll, is the smallest overseas territory controlled by France. Located at 10° 18' 14" N, 109° 13' 04" W, on the edge of the Pacific, about 1280 km southwest of Mexico. The lagoon of 2.4 by 3.9 km (7.2 km²) has a land surface of 1.7 km².



Fig. 2 - In 1895, 200 sets of ten stamps, denominated in American currency, were issued by W. Frese and Company, acting as agents of Oceanic Phosphate. The set's six similar designs pictured the atoll surrounding the year "1895".



Fig. 1 – Map drawn by Bellin in 1755 mentioning the island of Passion (Clipperton).

Although it had been observed much earlier by the Spanish (1521 Ferdinand Magellan) and Portuguese sailors, the island is a French territory. It has a special position (*territoire spécial sous l'autorité directe du gouvernement*).

Officially the island was discovered on 3 April 1711 by the frenchman Michel Dubocage on his way to China, who named it *Île de La Passion*. The name Clipperton comes from the English naturalist and filibuster, John Clipperton or Clippington. During the expedition of William Dampier and John Clipperton (1703-1707), Clipperton, in 1705, stayed a while on the island and explored and described it.

In the nineteenth century, ownership of *Clipperton Island* was disputed by France, Mexico and The United States of America.

Because of the remoteness and the lack of interest by the French, the United States claimed it as a temporary possession under the Guano Act of 1856, but in the end did recognize the claim of France in 1858. During a short period, between 1892-1897, the US exploited guano.

Clipperton Island stamps created during this period seem to be a private initiative created by employees of the San Francisco based Oceanic Phosphate Company who worked on the island. The stamps were used to carry letters from the workers on the island to San Francisco. They are generally considered as cinderellas.



Fig. 3 -1895, \$1 Express stamp, used by American workers to write to their families.

In 1897 Mexico invaded the island. Thereafter Mexican stamps were overprinted 'Clipperton' and may have been used to send mail from the island to Acapulco. Experts doubt their legitimacy.



Fig. 4 - Stamps of Mexico overprinted "Clipperton" 1899 - 1903.



Fig. 5 - 1934 overprint 'ISLA CLIPPERTON'.

Continued on p. 15.

Island Countries: From Island to Island, Part 2

Pierre Moise

Islands and Archipelagos Offshore.

This exploration ends with some independent archipelagos and Islands further removed from continents.

Archipelagos

Cape Verde is an archipelago of ten tiny volcanic islands off the North West coast of Africa. In 1546 the Portuguese landed on Cape Verde, which was uninhabited but fertile.

The islands grew prosperous throughout the 16th and 17th centuries, attracting merchants, privateers, and pirates. The islands gained independence in 1975.



Fig. 15 - Cape Verde Mi 358



Fig. 16 - Comoros Mi 1118.

Comoros consists of three major islands and numerous smaller ones located off the east coast of Africa between Tanzania and Madagascar. It became part of the French colonial empire in the 19th century, then became independent in 1975. Since declaring independence, the country has experienced more than 20 coups d'état or attempted coups. Comoros includes Mayotte in its philatelic issues. However Mayotte considers itself a French Department, not part of Comoros..

The **Maldives** are located south west of Sri Lanka in the Indian Ocean. A country made up of 1192 small coral islands scattered over a large area of sea. Only 200 of them are inhabited. The Maldives became a British protectorate in 1887. Independence from the United Kingdom was achieved in 1965 and a presidential republic established in 1968.



Fig. 17 - Maldives Mi B70.

The **Seychelles** is located North of Madagascar. The country, consisting of 115 islands, was visited by the Portuguese navigator Vasco de Gama in 1501.

The islands were appropriated and settled by France in the 18th century. Britain took possession of the islands in the early 19th century. They became an independent republic in 1976. On this occasion, they recovered the "outer islands" located to the South of the archipelago. In contrast to the "Inner Islands" located on a granite base, these islands are coral atolls that had been "separated" in 1965 to be incorporated into the British Indian Ocean Territory (BIOT) during the independence of Mauritius. These islands had their own philatelic issues between 1980 and 1992 (Fig.18) under the name Zil Eloigne Sesel then Zil Elwagne Sesel then finally Zil Elwanyen Sesel which means distant islands in creole.



Fig. 18 - Seychelles Mi ZE19.



Fig. 19 - Sao Tome & Principe Mi B14.

Sao Tome and Principe is composed of 2 main islands. The archipelago is located at the bottom of the Gulf of Guinea, off Gabon, just on the equator line. The archipelago was discovered in 1471 and remained a Portuguese colony until its independence in 1975.

Islands

Cyprus is the third largest island in the Mediterranean Sea, located at 75 kms (41mi) from the Turkish coast. Because of this location, all the Mediterranean civilizations had an influence on it. In 1878 Britain took over its government and in 1925 it became a Crown Colony.

Cyprus became independent in 1960 with power shared between the Greek majority and Turkish minority. In 1974 Greek Cypriots performed a military coup, in response Turkey invaded the northern portion of the island. Conflict between them resulted in the partition of Cyprus. The stamp, Figure 20, was issued in 1984 to protest ten years of occupation of (Greek) Cyprus territory by Turkey.



Fig. 20 - Cyprus Mi 618.

Iceland is the country of volcanoes, geysers and hot springs. It is located on the Mid-Atlantic Ridge, in between Greenland and Norway, just south of the Arctic circle. The island was reached by the Vikings in the 9th century and then went from the Norwegian crown to Denmark in 1380. It became autonomous in 1904, independent in 1918 and became a Republic in 1944.



Fig. 20 - Iceland Mi468.



Fig. 21 - Madagascar Mi443.

Malta occupies a strategic position in the center of the Mediterranean. It consists of 3 islands; Malta, Gozo and Comino. A British colony since 1814, it became independent in 1964.



Fig. 22 - Malta Mi 1640.



Fig. 23 - Mauritius Mi 365.

Mauritius is composed of several islands including Mauritius and Rodrigues. They are part of the Mascarene Islands in the Indian Ocean, with Reunion. The first Dutch settlers arrived in 1598. The island was then colonized by the French from 1715 to 1810. Then the English came, they made it a colony in 1814. It gained its independence in 1968. ■

Notes from the Editor.

First an apology. In 2017 I changed my ISP. I was not aware that they limit the number of email address' I can send to. I sent out an email asking for articles. It exceeded the magic number. Some of you did not receive this, others received multiple copies of my request. Sorry.

We are exploring alternative ways to send communications such as MailChimp. Those of you who receive TNCP as a download link may receive a request to accept communications from their service.

When we restarted the New CartoPhilatelic journal, its copy was about 16 pages. Then we received many excellent articles, so we increased the published content to 20 pages. Recently however, our reliable authors have had their pens go dry.

Australian Territories
continued from p.5.



Fig. 27 - SG 536.

References

B. Marshall, Tuki's map of New Zealand, *TNCP* 39, October 2012, 9.

Stanley Gibbons, *Commonwealth Stamp Catalogue*, 10th Edition, *Australia*. London, 2016.

Wikipedia - Postage Stamps and Postal History of Norfolk Island.

Wikipedia - Norfolk Island.



[Louis XVI giving Lapérouse his instructions on 29 June 1785](#), by [Nicolas-André Monsiau](#) (1817). ([Château de Versailles](#))

Wikipedia attribution:

By [Nicolas-André Monsiau](#) - [Chateau de Versailles](#), Public Domain, <https://commons.wikimedia.org/w/index.php?curid=9446556>

This edition is only 16 pages not 20.

I could write an article or copy one from another source, but... I would prefer to publish original material.

I received this (extract) from a member: “The quality of the articles may discourage members from writing. Perhaps we should encourage them to simply tell a story about their collection, and what interested them to get started on this subject.”

We did this before, but let's try “My favorite stamp” again.

Like to try the Caribbean? Pick an Island or two. Tell its history. But let me know so there is no duplication.

Martin Oakes

New Issues ~ April 2018

David Wolfersberger and KK Ang

Beginning with this issue, long-time member KK Ang of Singapore will help with the New Issues section of *The New CartoPhilatelist*.

The foundation of the Baku-Tbilisi-Kars (BKT) railway line was laid 2007. It of great importance for Azerbaijan both politically, economically and strategically. By rail, Azerbaijan will get direct access to international transport corridors and take just one day to Kars in Turkey. The project does not pass through Armenia due to the conflicts between Azerbaijan and Armenia.

Three cities are shown in the souvenir sheet (Scott TBD) from **Azerbaijan**: Baku, Tbilisi and Kars in Azerbaijan, Georgia and Turkey respectively. Azerbaijan lies along the coast of the Caspian Sea as shown in blue on the right-hand side of the souvenir sheet. It supplied half of world's oil output from oil fields near its capital, Baku, before oil was found in the Middle East. Tbilisi is Georgia's ancient capital and is its largest city. *Kars* is a city in northeast *Turkey* and the capital of *Kars* Province. It is the largest city on the *Turkish* side of the closed border with Armenia.



Azerbaijan, Scott TBD.

Notice something interesting: a corridor of Armenian territory separates the main part of Azerbaijan from the Nakhichevan Autonomous Republic, a self-governing region of Azerbaijan.

Colombia issued a souvenir sheet (Scott 1451) to mark the bicentennial of the birth of Manuel Murillo Toro. Murillo was an important politician and diplomat in the country, serving two terms as president (1864-66, 1872-74). He was also served as Secretary of State and Secretary of Treasury, and several other diplomatic posts. He is best known for sponsoring legislation relating to freedom of religion, freedom to assemble and freedom of the press.

To note Murillo's founding of the National Press and Telegraph Institute, a telegraph key is on the stamp and sheet mar-



Colombia Sc 1451.

gin. He also founded the National Cartographic Institute; this is commemorated by an excellent topographic map of Colombia.

The island that is now home to the Dominican Republic and Haiti, Hispaniola, was visited by Columbus on his first voyage in 1492. Columbus named it La Isla Española (The Spanish Island). Eventually, through translations and misspellings, it became known as Hispaniola. It was also called Isla de Santo Domingo, Santo Domingo being the largest city on the island. The island is also home to the first European settlement in the Americas.

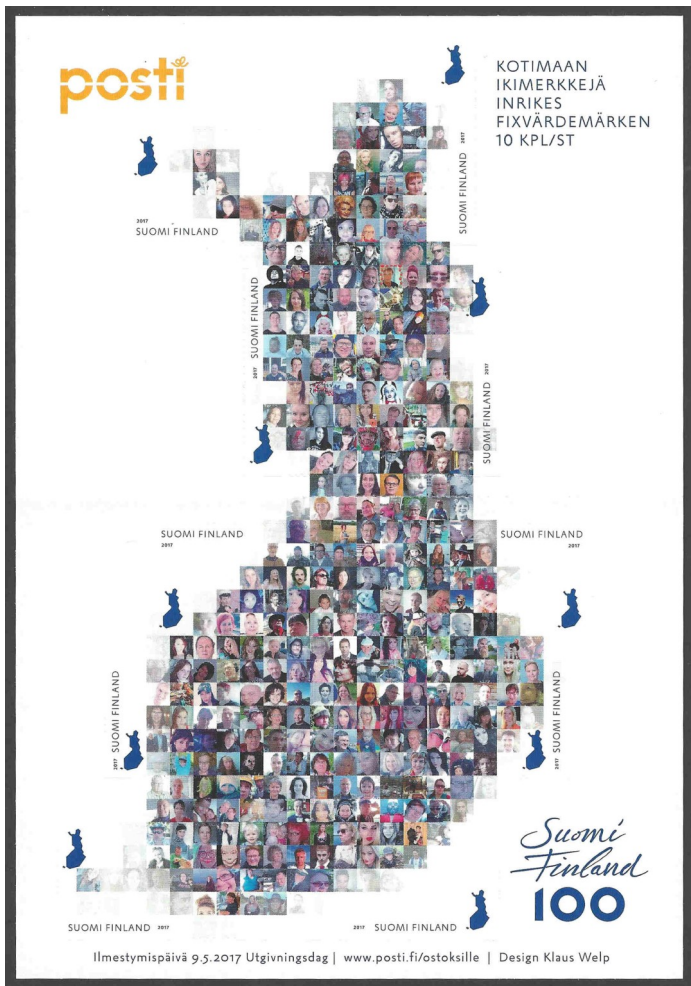
The **Dominican Republic** issued two sheets of 12 stamps each (Scott 1616-17), each stamp showing a historic map of the island. The first is a 1493 map by Columbus, the last an



Dominican Republic Sc 1617.

1802 map by Ambroise Tardieu, a French cartographer known for his beautiful and accurate maps. These stamps contain a wealth of information about Hispaniola; a thorough study of each of the 24 maps would be a challenge. It is interesting to note that the last map shown is from 1802, just prior to the independence of Haiti from France.

To celebrate its 100th anniversary of independence, **Finland** issued a rather “fun” booklet (Scott 1539) consisting of numerous photos of citizens formed into a map of the country. In addition, each stamp has a small map of Finland.



Finland Sc 1539.

Jože Plečnik was an important Slovenian architect, designing many buildings in numerous cities. A recent sheet from **Slovenia** (Scott 1239) shows three of his most famous designs: The National and University Library, Ljubljana; All Saints Cemetery, Ljubljana; and Church of St. Michael of the Marsh. On the margin of the sheet is a detailed map of part of the city of Ljubljana, where many of the buildings he designed are located.

Spain issued a set of two stamps (Scott TBD) “Discoverers of Oceania,” with pictures of two explorers: Pedro Fernandez de Quirós and Luis Vaez de Torres. From the Spanish postal website:



Slovenia Sc 1239.



Spain Scott TBD.

Luis Vaez de Torres was a navigator in the service of the Spanish Crown, who embarked on an expedition in 1605 with Fernandez de Quirós to discover a new continent in the South. They found the strait that separates Australia from New Guinea, and which now bears his name (Torres Strait). His shipmate, Pedro Fernandes de Quirós, a Portuguese navigator in the service of the Spanish Navy, sailed for the southernmost continent, discovering the island known today as Espiritu Santo, the largest island in Vanuatu.

There are some who think that Torres and de Quirós were the first Europeans to find Australia, and perhaps even named it. However, this theory is not generally accepted. The stamps show Australia, New Guinea, Vanuatu, and the Strait of Torres. It is also printed on thin wood, to recall the wooden sailing ships the explorers used.

South Georgia & the South Sandwich Islands recently issued a set of six stamps featuring maps and expeditions of South Georgia (Scott TBD). The first pair shows the 1775 Cook Map of South Georgia on one stamp and Cook’s ship, HMS *Resolution*, on the other. The map on the second set is the Carse Map of 1958. Its mate shows a surveyor at work during the 1951-57 survey of the island. The final pair shows a 2017 British Antarctic Survey (BAS) map and a Geographic Information System (GIS) map. A red line on the last map shows the route of the “Shackleton Crossing,” the route of his 1916 expedition.



South Georgia Scott TBD.

To mark the 200th anniversary of the death William Bligh, **Pitcairn** issued a set of four stamps (Scott 837-40). Each shows a key event in Bligh's life:

- Scott 837: 1776-81 – Bligh served as Master of the HMS Resolution under Captain Cook. Map in background shows route of the ship.
- Scott 838: 1789 – Bounty mutiny. The map shows the location of the mutiny and the route that Bligh and those loyal to him sailed to Timor, over 3500 miles.
- Scott 839: 1801 – Bligh was Master of the HMS Glatton, which fought at the Battle of Copenhagen under Admiral Nelson. Battle map in background.
- Scott 840: 1806-08 – Bligh was Governor of New South Wales; map of Australia in background.



Pitcairn Sc 837 - 40.

The Struve Geodetic Arc is a chain of survey triangulations done by a team lead by the Russian Friedrich Georg Wilhelm von Struve between 1816 and 1855. Stretching from Norway to the Black Sea in the Ukraine, it passes through 10 countries. The survey was undertaken to precisely determine the length of a meridian and thus help determine the true shape of the Earth.

Belarus issued a souvenir sheet (Scott 1059) commemorating this massive undertaking. On the stamp is a detailed map of the arc through Belarus, along with the photo of one of the monuments that marks a point along the arc. Also, on the stamp is a portrait of Iosif Ivanovich Khodz'ka, who conducted the survey through Latvia, Lithuania, and Belarus. On the sheet margin (upper left) is an image of Struve; Carl Friedrich Tenner, who also was a surveyor of the arc; and surveying equipment. The arc 19 marked points of the arc in Belarus.



Belarus Sc 1059.

The Checklist has nine additional stamps and sheets showing the Struve arc, including as 2007 sheet from Belarus. A search on the Michel on-line catalogue identified a few more:

- Belarus Scott 897 (2014): Belarus in UNESCO – Struve Arc monument
- Russia Scott 1722 (1954): Restoration of Pulkov Observatory – portrait of Struve
- Russia Scott 2970 (1964): Russian scientists – portrait of Struve on 100th anniversary of his death

Thanks to the American Philatelic Society Translation Service for providing the translation of the information on the sheet. The Translation Service is available to APS members at no cost for simple translations and modest costs for more complex work.

The longest stretch of the Silk Road passed through the territory of Central Asia, including **Kyrgyzstan**. Along the Silk Road, rich cities, commercial settlements and caravanserais

emerged and flourished. In the territory of Kyrgyzstan, these include: Djul, Suyab, Novokent, Balasagun, Borskoon, Tash-Rabat, Osh and Uzgen. These are shown as 14 white dots in this recently issued miniature sheet (Scott TBD).



Kyrgyzstan Express Post Scott TBD.

In September 2013, the People's Republic of China put forward the concept of the "New Silk Road," better known as "The Belt and Road Initiative". The Chinese character on the left side of this sheet means "one road one belt, win-win development" in Chinese.

Various objects associated with Chinese culture appear on this miniature sheet. At the right is a dragon, which is deeply rooted in Chinese people's hearts; it has become the symbol of the Chinese nation. Below it is a traditional Chinese junk – the bamboo battens stiffen the sail and make it easier to roll up in high winds. Following is an ancient cotton ginning machine. Next to it is a delicately painted porcelain jar and a blue-and-white jar. These magnificent porcelains were finely crafted ceramics that were exported to Central Asia and Europe via the Silk Road. On the bottom left side, shown is one of the four great inventions of ancient China: The compass. The other three great inventions were printing, paper and gun powder.

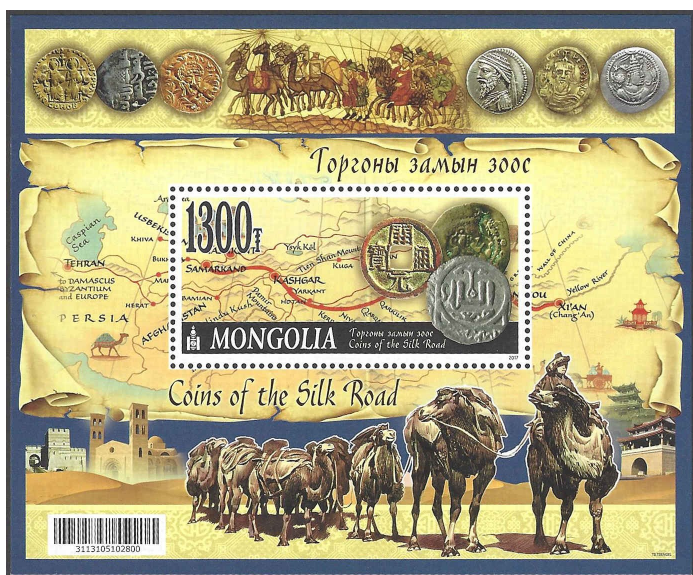
Another new souvenir sheet featuring the Silk Road was issued by **Mongolia** (Scott TBD). As shown on the right in this recently issued miniature sheet the starting point of the Silk Road on land was from Chang'An (present-day Xi'an) in Shaanxi Province, China. The road was formed in the Western Han Dynasty when the envoy Zhang Qian was assigned to explore the Western Regions of China. It was named 'Silk Road' as silk was the most important product transported to the west at that time.

From Chang'An the Silk Road passes through Kashgar (in Xingjiang Province, China), Samarkang (in central Uzbekistan) and Tehran in Persia (present-day Iran). In Han Dynasty times, Chinese camel caravans stopped at Kashgar. From there, Middle Eastern merchants, who wanted a share of the profits, took the expensive goods to distant places such as ancient Rome, which bordered the Mediterranean Sea. Uzbekistan was on the ancient Silk Road for over four centuries; up until the 1400s, this was an important trade route from China to Middle East. It is interesting to note the word Byzantium

appeared on the left side of the sheet. It refers to Constantinople, now Istanbul in Turkey.

The sheet also shows the camel caravans that travelled along the Silk Road. The Silk Road wound its way across the dry, barren lands that linked the oasis-cities of central Asia. Camels were the only beasts of burden that could survive these harsh conditions. These beasts each carried 200 kg of cargo and carried only luxury goods because transport was expensive and difficult. They could smell underground water and warned their riders of deadly suffocating sandstorms by huddling together, snarling and burying their mouths in the sand.

Coins with different written languages with human figure heads are illustrated. Right at the center is a coin with Chinese characters and a square hole in the center. It is the coin used during the China Tang dynasty around year 1000. Other coins could not be identified further due to constraint in reading the ancient languages and figures.



Mongolia Scott TBD.

KK Ang is a third generation Singapore Chinese, born in Singapore in 1955. He graduated with a science degree and spent his entire 36-year career in the information technology industry in Singapore, retiring in 2015. He currently works as a freelance translator/Interpreter and as a Singapore Tourism Board licensed tourist guide.

He started stamp collecting when he was in lower secondary school. At first, he collected only Singapore stamps but over the years added several topical collections like sea shells, fruit, musical instruments, etc.

KK likes geography and viewing maps. He thought collecting maps on a small stamp would be too small to show any details of the map or allow the appreciation of the beauty of the design. He now focuses on collecting maps on souvenir and miniature sheets collection (about 700 pieces) for everyone to view from the cloud. KK also plans to organize and catalogue his collections. He enjoys every issue of *The New CartoPhilatelist* and is the proud owner of the entire run of *The New CartoPhilatelist* from No. 1 to No. 60.

Scott's New Issues Updates December 2017 to February 2018 Copy

Date	Country	Issue	Scott	Format	Grade	Coverage	Face Value
2017	Azerbaijan	25th anniv. Azermarka, printer of postage stamps.	1138	S/S of 1	A	Satmp on stamp: Azerbaijan on Scott 963 - on sheet margin	1m
2017	Azerbaijan	Kars/Tbilisi/Baku train route	TBD	S/S. Joint issue with Turkey	A	Train route	1.5m
2017	Bangladesh	World Telecommunications Day	864		A	Globe	10t
2017	Belarus	Struve Geodtic Arc	1059	S/S	AR	Europe showing arc	3r
2017	Belarus	25th anniv. Diplomatic Relations with Kazakhstan	1061		O	Belarus in coat of arms	H rate (1.38r when issued)
2016	Brazil	Tattoos	3348b	S/S of 5, 3348a-e	A	North, Central and South America	1.70r when issued
2016	Chile	Native peoples of Chile	1640-45		A	Chilie on each	10p, 20p, 30p, 50p, 100p, 1000p
2016	Colombia	Rio Olympics	1436	S/S	A	Western Hemisphere in background	25,000p
2017	Colombia	Pres. Manuel Murillo Tullo	1451	S/S	A	Colombia	2000p
2016	Cuba	Return of Castro to Cuba 60th anniv.	5877		A	Map of voyage	65c
2017	Cuba	Birds of Guanahacabibes Peninsula Park	5898		A	Guanahacabibes Peninsula	65c
2017	Djibouti	Valentina Tereshkova, first woman in space	1159	S/S of 4	A	SE US on margin	240fr each
2017	Djibouti	Sinking of the Titanic	1162a	S/S of 4	A	North Atlantic Ocean showing ship's route	240fr
2017	Djibouti	Charles Darwin	1172b	S/S of 4	A	Route of the HMS Beagle in Pacific Ocean	240fr
2017	Djibouti	Djibouti-Ethiopia Electric Train opening	1202-03	S/S of 4. Both sheets have same design and differ only in face value.	A	Route of trian on margin	1202: 200fr each; 1203: 250fr each
2017	Djibouti	110th death anniv. Korolev	1262	S/S	A	Globe on margin	950fr
2017	Djibouti	50th anniv. Outerspace Treaty	1281a	S/S of 4	A	World map	240fr
2017	Djibouti	Battle of Dunkrik	1290	S/S	A	Map of battle	950fr
2017	Dominican Republic	Maps of the Islands	1616-17	2 sheets, 12 stamps each	AR	Maps from 1398 to 1802	\$10 each
2016	Egypt	July 23 Revolution 64th anniv.	2162	Stamp on stamp: Egypt 356, 374, 386, 388 and 393	A	374, 386, 393: Suez Canal	£4
2017	Estonia	25th anniv. Constitution	846		A	Estonia	65c
2017	Finland	Faces of Finland	1539	Sheet of 10	A	Photos of faces make up make of Finland	1st (€ 1.30 when issued)
2017	France	Treasures of Philately	TBD	S/S of 5. This is one of the ten sheets issued annually as part of the Treasures of Philately series.	A	Part of Europe, Africa, Atlantic, South America with flight route, seaplane Latécoère 300 flying mail from Europe/Africa to South America	4x€1.70; 1x€2.20
2017	French Southern & Antarctic Territories	Symbols	568	Sheet of 4, 568a-d	A	568b: Crozet; 568c: Kerguelen; 568d: St. Paul & Amsterdam	Int'l (€1.24 when issued)
1974	Grenada Grenadines	UPU 100th anniv.	Not listed. Noted in Michel.	Sheet of 5 Scott 24 + label	A	Carriacou on label	5x8c

Date	Country	Issue	Scott	Format	Grade	Coverage	Face Value
1974	Grenada Grenadines	UPU 100th anniv.	Not listed. Noted in Michel.	Sheet of 5 Scott 25 + label	A	Petit Martinique on label	5x25c
1974	Grenada Grenadines	UPU 100th anniv.	Not listed. Noted in Michel.	Sheet of 5 Scott 25 + label	A	Petit Martinique on label	5x35c
1974	Grenada Grenadines	UPU 100th anniv.	Not listed. Noted in Michel.	Sheet of 5 Scott 26 + label	A	Carriacou on label	5x\$1
1972	Hungary	World Wine Exhibition, Budapest	2166		AR	View map of Eger	1fo
2017	Kyrgyz Express Post	Silk Road	TBD	S/S	A	Map of Silk Road	150kgs
2017	Malagasy Republic	World Conference of Freemasons	TBD	Single, S/S of 4	A	World	10,000A each
2017	Malagasy Republic	Regional coat of arms - Analamanga	TBD		A	Madagascar with Analamanga highlighted. Other regions outlined.	500A
2017	Mongolia	Silk Road/coins	TBD		AR	Route of Silk Road, Theran to Xi'an	1300f
2017	Namibia	500th anniv Reformation	TBD	S/S	A	Africa on margin	\$7.30 when issued.
2018	New Zealand	New Zealand In Space	TBD	S/S of 6	A	Hawke Bay - Mahia Peninsula	\$1, \$2, \$2.20, \$2.70, \$3, \$3.30
2017	Pitcarin Islands	Capt. William Bligh - 200 years death	837		AR	Europe, Africa, Pacific Ocean - route of Cook's third voyage?	\$1.00
2017	Pitcarin Islands	Capt. William Bligh - 200 years death	838		AR	Pacific - route of Bligh's escape after mutiny	\$2.10
2017	Pitcarin Islands	Capt. William Bligh - 200 years death	839		AR	Northern Europe - Battle of Copenhagen	\$2.80
2017	Pitcarin Islands	Capt. William Bligh - 200 years death	840		AR	Australia	\$3.00
2017	Pitcarin Islands	Marine Preserve	832	S/S of 8, 832a-h	A	Pitcarin on margin	4x\$1, 4x\$2
2017	Poland	Mountains	4291	S/S	A	Belarus in coat of arms	6z
2016	Saint Thomas & Prince	First flight of Hindenburg 80th anniv	3049	S/S of 4	A	3049d: Europe, Africa, South America showing flight route	31,000d
2016	Saint Thomas & Prince	High speed train: British 801	3104	S/S	A	World map on sheet margin	96,000d
2017	Salvador, El	75th anniv. Inter-American Defense Board	1761-62		A	North, Central and South America	5c, 20c
2016	Senegal	Postage stamp trade	TBD	Pair	A	Africa	200Fr, 1000Fr
2017	Seychelles	100th anniv. Liions Club of Seychelles	TBD		AR	Mahe, Praslin and La Digue Islands	5R
2017	Slovenia	Joze Plecnik, architect	1239	S/S of 3, 1239a-c	A	City street map stamps and margin	40c, 48c, 58c
2018	South Georgia & South Sandwich Islands	Maps of South Georgia	TBD		A/AR	70p: 1775 map by Cook; 80p: 1958 map by Carse; £1.20: 2017 satellite map.	70p, 80, £1.20
2017	Spain	Expedition by Luis Vaez de Torres and Pedro Fernández de Quirós	TBD		A	Australia, New Guinea, New Zealand, Vanuatu	€1.35 each
2017	Spain	40th anniv. Membership in Council of Europe	TBD		A	Europe	50c
2017	Switzerland	Pro Juventute	TBD		A	Globe	85c+40c
2017	Switzerland	Swiss cow	TBD		A	Switzerland	100c

Date	Country	Issue	Scott	Format	Grade	Coverage	Face Value
2017	Thailand	National Communications Day	2926		A	Thailand	3b
2017	Turkey	Kars/Tbilisi/Baku train route	TBD	S/S. Joint issue with Azerbaijan	A	Train route	3.7
2017	Vatican City	50th anniv. "Populorum Progresio," by Pope Paul VI	1660		A	World	€ 1.00
2017	Wallis & Futuna	Whales	TBD		A	Wallis & Futuna Islands	400fr
2017	Wallis & Futuna	Women's Day	TBD		A	Globe, SEA/Pacific with Wallis & Futuna highlighted	290fr

Continued from p. 6.

In 1990 a series of 30 stamps was issued by Mr. Henry Guillon. These French stamps from the thirties have an overprint 'Île de Clipperton'.



Fig. 6 - 1990, 'île Clipperton'.

From 1897 until 1917 Mexico occupied the island exploiting the phosphate. This was the longest human occupation of Clipperton.

In 1906, the British 'Pacific Island Company' annexed the island and built a settlement together with the Mexican government in order to mine guano. Also a lighthouse was erected. In 1914 about 100 people lived on the island. However, with the start of the Mexican civil war (1910-1920), the atoll was no longer reachable by ship and the people on the island were on their own. By 1917 most of the inhabitants had died.

The sovereignty dispute between France and Mexico was turned over for arbitration to the king of Italy, Victor Emanuel III, in 1908. In 1931 the claim of France, dating back to 1858, was decided in favor of France and Mexico withdrew its presence in 1932.

With the opening of the Panama Canal in August 1914, Clipperton Island suddenly had a strategic importance. In 1938, some US military vessels, including the President Franklin Roosevelt, visited Clipperton. Apparently interested in using the island as an outpost for the defense of the Panama Canal. During the second world war, an American Navy base was located on *Clipperton Island*. After the war it was abandoned, and has since then only been visited by the French Navy and an occasional scientific or an amateur radio expedition.

There still is some debate about the exclusive economic zone (EEZ) around *Clipperton Island*. According to some interpretations of the UN Convention on the law of the sea, there is no EEZ around an island that is not inhabited. This may have consequences for tuna fishing and the discovery of large quantities of precious metals in the sea.

Clipperton also figured in a bizarre scheme under which it was part of the virtual "Dominion of Melchizedek". This



Fig. 7 - Modern map.

'Dominion' was proclaimed in 1990 and has served mainly to sell phony banking and incorporation papers.

In 2011 France issued a real stamp, celebrating the 300th anniversary of the discovery of *Île de La Passion, île de Clipperton*, with a map of the island and its flora and fauna. ■



Fig. 8 -2011 France, Sc4097.

Sources:

- Jack Child – "Miniature Messages", 2008, Duke University Press
- Boudewijn Büch – "Eilanden", 1991, Uitgeverij De Arbeiderspers
- Boudewijn Büch – "Het IJspaleis", 1993, Uitgeverij Atlas
- Christian Jost – "Bibliographie de l'île de Clipperton – Île de La Passion (1711-2015)
- Clipperton – Project d'Outre-Mer, www.clipperton.cpom.fr > Philathélie.



Collectors of Maps on stamps

Editor: Martin Oakes
2100 Oriole Drive
Freeport, IL 61032, USA
Email: editor@mapsonstamps.org



www.mapsonstamps.org

ISSN 1930-2053

The views and opinions expressed in this journal are those of the authors and do not necessarily reflect the official policy or position of The CartoPhilatelic Society, its officers or members.

The CartoPhilatelic Society is a nonprofit philatelic organization with a world-wide membership of collectors of maps on stamps. Founded in 1955, the organization was rejuvenated in 2003. We are associated with the American Philatelic Society and the American Topical Association. Annual dues are US\$20 for residents of the USA only, and US\$25 for members residing elsewhere for hard copy, and US\$15 for PDF everywhere. You are cordially invited to join us and share our enthusiasm for maps on stamps. A membership application may be found on our website or obtained from the Secretary. Please send your application and dues to the Treasurer.

President	Mark Honig	Kluivervkamp 28	1541 XZ Koog aan de Zaan, Netherlands
Vice President & Checklist Editor	David Wolfersberger	5062 NW 35 th Lane Road.	Ocala, FL 34482-4816
Secretary	Marybeth Sulkowski	Unit 209 1117 Douglas Ave.	North Providence RI 02904
Treasurer	Phil Coop	4350 Tuckahoe Road	Memphis, TN 38117
European Rep.	Volker Woesner	Sandkoppel 10	24119 Kronshagen Germany
Rep. at Large	Stuart Hamilton	PO Box 384	East Melbourne, VIC 8002 Australia
Asia/Pacific Rep.	Brian Marshall	86 Shackleton Road	Mt. Eden, Auckland, 1024, NZ
Webmaster	Reese Plews		admin@mapsonstamps.org

© 2018 The CartoPhilatelic Society. All rights reserved. Reproduction prohibited without express permission of Editor or Author.

Web Password

The access password for the "TNCP Members Only Archive" will be changed on April 20, 2018. The new password will be: **tobler1930** (case sensitive). The new password recognizes the work of American-Swiss geographer and cartographer Dr. Waldo Tobler who passed away on Feb 20, 2018.

Professor Tobler was well known for having coined the first law of geography, stated as: *"everything is related to everything else, but near things are more related than distant things."* In 1973 he introduced the construction of the hyperelliptical projection, and continued research over his distinguished career into other projections and the construction and use of cartograms.

If you have any problems accessing the Members Only Archive, please contact the editor or web administrator using the contact form on the web site.

Membership Renewals for 2018-2019

Thanks to everyone who has already renewed or paid in advance for multiple years. And just a reminder for others, dues for 2018-2019 are now due as of April 1, 2018. See the Society's website or the notice you recently received for directions on how to pay current dues.

Prompt renewal is a great favor to your volunteer officers.
Please email treasurer@mapsonstamps.org with any questions.

CPS to Meet at StampShow 2018

The CartoPhilatelic Society will meet at the joint American Topical Association/American Philatelic Society joint StampShow 2018, Columbus, Ohio, August 9-12, 2018. Date and time for the meeting, and the agenda, will be announced closer to the event. This will be a great show, with about 100 dealers and 900 exhibit frames, plus many seminars and society meetings.

Details about the show, including hotel reservations, are available at :
<https://stamps.org/STAMPSHOW-SS>.

Also, help is needed to staff the ATA booth on the show floor. If you could volunteer an hour or two during the show, that would be helpful. Please let David Wolfersberger (dewolf2@swbell.net) know if you plan to attend the StampShow, and if you can help at the ATA booth.

Another great resource is the Cumulative Tables of Contents Listings for both CPS and TNCP. Be sure to have a look. Now updated for 2018. <http://www.mapsonstamps.org/publications/cumulative-tables-of-contents/>