

# The New CartoPhilatelist

## No. 62 July, 2018

New\_CartoPhilatelist\_n62\_JUL\_2018.pdf

ISSN 1930-2053

**Journal of the CartoPhilatelic Society**

**©The CartoPhilatelic Society**

**All Rights Reserved**

**No Unauthorized Reproduction, Transcription, or Resale**

**Without the Written Permission of the President,**

**CartoPhilatelic Society**

**For Contact Information:**

**[mapsonstamps.org](http://mapsonstamps.org)**

**[cartophilatelicsociety.org](http://cartophilatelicsociety.org)**



# The Danish – German Border

## Volker Woesner.



Fig.1 - Denmark Mi.829. The border between Denmark and Germany established in 1920

In May 2018 the Danish Government decided to build a 68km (42mi) fence on the German – Danish border to prevent the intrusion of wild boars.

Territorial and border disputes among countries, have existed in Europe for several centuries, even in northern Europe. Many stamps have been issued on this topic, e.g. Figs. 1, 8, 9, 10.



Fig.2 - Germany Mi. 1802. Cimbric Peninsula with Jutland, Schleswig and Holstein.

The present land border (Fig.1, 8) between Denmark and Germany, is the result of a



Fig. 3 - Denmark Mi.1537. Denmark in 1570 with Schleswig.

plebiscite in the Schleswig area and was created on June 15, 1920.

It is Denmark's only terrestrial border with a length of about 68km (42mi).

Following the German defeat in WWI and the Treaty of Versailles in 1919 a 1920 referendum resulted in the partition of Schleswig.

Over nearly a thousand years, Schleswig and Holstein have been subject to claims by Denmark, Sweden, the Holy Roman Empire, Prussia, and Austria.



Fig.4 - Denmark Mi.1535. Denmark 1585 with Schleswig.

In the 12<sup>th</sup> century Schleswig became a dukedom and it remained a fief associated with Denmark until 1864. Holstein was more independent.



Fig.5 - Mi.1534. Denmark with Schleswig 1841.

*(continued on page 3)*

### Inside this issue:

Danish - German Border	1
Trifecta Covers	2
Dejima	4
Liberia 1894 map stamp	7
West Indies Federation	15

### Special points of interest:

<b>New Issues</b>	<b>8</b>
<b>Messages</b>	<b>16</b>

# Trifecta Covers

## Phil Coop

### Suriname Scott 391

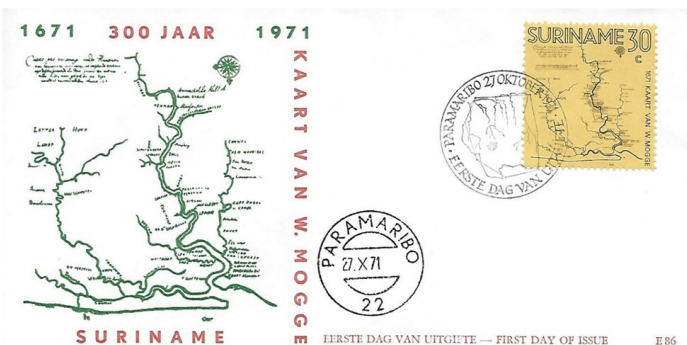


Fig 1. - First day cover for Scott 391.

In addition to maps on stamps, some CartoPhilatelists add covers to their collection. These covers may include map stamps used as postage and, especially in the case of first day covers or souvenir covers, they may include cachets on the envelope which contain maps; sometimes both. But the “trifecta” of map stamp covers may be those that have map stamps as postage, map cachets on the envelope and a map based cancellation.

There are many examples in the Carto world. One of the most interesting of these “trifecta” covers may be the first day cover for Suriname Scott #391. Figure 1. This beautiful map stamp contains a reproduction of Willem Mogge’s 1667 Map of Surinam which was issued in 1971 to honor the 300<sup>th</sup> anniversary of the first map of the country. In 1667, Mogge was sent to Suriname from the Netherlands to make a “pertinent and accurate map of the whole of Suriname.” The map, *Caerte ofte vertooninge vande Rivieren van Suriname* (Map of the Rivers of Suriname), was published in 1671. It showed the principal rivers of the then Dutch colony and many names of the owners of the sugar plantations along those rivers.

The British had controlled the colony until 1667 when they surrendered it to the Dutch. During the British administration the capital was Tararica, a township on the left bank of the river. Mogge's map shows a settlement called Paramaribo near Fort Zeelandia as the last settlement on the right bank of the Suriname River (lower right on the stamp).

The cover also contains a sketch of the map on the left side that was issued to mark the first issue for the stamp on October 27, 1971. Interestingly, the cover is cancelled with a postmark which also contains a map. The postmark shows the rivers of Suriname as well, although on it, the top is north whereas Mogge’s map has the top as south.

This is not the first trifecta” cover for Suriname in fact. In his interesting TNCP 22 article on *The Guyana – Suriname Border Disputes*, Mark Honig provided two illustrations of trifecta first day of issue covers: a cover containing Scott # 375-377 with a map cachet and map cancellation; and one containing

Scott #389-390, also with a cachet containing a map of the rivers of the country and with a postmark showing an outline map of the country. Interestingly, as Honig points out, the maps on the cancellations of the Sc #389-390 cover and the #391 cover below do not show the border dispute area, apparently supporting Guyana’s claim! For further details on this interesting border dispute see Honig’s article.

### For further reading:

Honig, Mark. “The Guyana – Suriname Border Dispute,” in *The New CartoPhilatelist*, number 22. July, 2008.

Klinefelter, Walter. “Old Joden Savanne in Surinam,” in *The CartoPhilatelist*, Vol. XV, No. 2. April, 1969.

Roosevelt, Franz van. “Background to a Map of Suriname,” in *The CartoPhilatelist*, Vol. XXXV, No. 3. September, 1990. This article contains excellent bibliographic information on Surinam maps and map stamps.

### More Examples of Trifecta Covers.

Following are two Argentine examples. Scott #680, with a map of the Western hemisphere issued in 1959 to honor the first International Horticultural Exhibition, it is used on a cover containing a map cachet of Argentine claims in Antarctica with a cancellation showing a map of the same area. The cover celebrates the first tourist cruise to Antarctica from Argentina. Interestingly the cancellation text appears to say that the cover could not be cancelled at the destination due to “inconveniences” in the Antarctic Zone. Fig. 2.

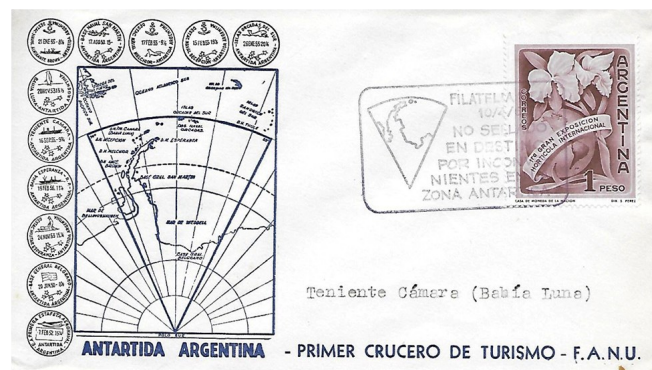


Fig. 2 - Argentina Sc 680. First International Horticultural Exhibition.

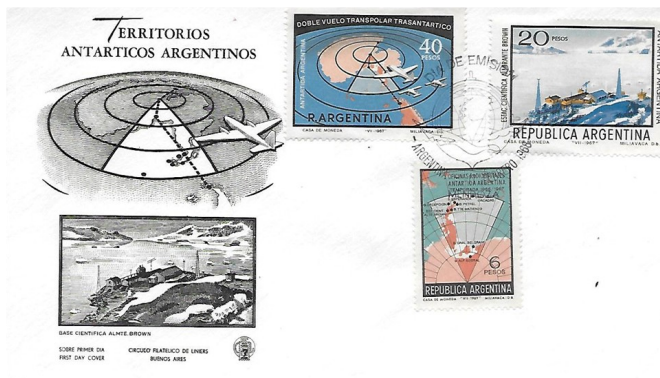


Fig. 3 - Argentina Sc 851-853. Antarctica claims.

(continued on p. 3.)

***(Danish - German Border continued from p.1.)***

It was ruled for centuries as a duchy by the kings of Denmark but remained always a fief of the Holy Roman Empire.

After 1815 Holstein was incorporated in the “German Confederation”. As Denmark’s interests in the two duchies were significant it became a bone of contention between Denmark, Prussia and Austria.

As Danish and German nationalism came into conflict in both duchies, two German-Danish wars (1848 and 1864) occurred.



Fig.6 - Denmark Mi 1536. Denmark 1650 showing Schleswig.



Fig.7 - Germany Mi.1715. Federal state Schleswig-Holstein.



Fig.8 - Germany Mi1241. Border between Denmark and Germany since June 15<sup>th</sup> 1920.

Prussia annexed both Holstein and Schleswig and both became Prussian Provinces.

The defeat of Germany in WWI and the Treaty of Versailles in 1919 lead to a plebiscite (Fig. 9+10) in both the northern (Zone 1) and southern (Zone 2) of Schleswig. Because of Schleswig’s and Holstein’s German and Danish – speaking minorities. The northern part voted 70% to join Denmark, while the southern part voted 80% to remain within Germany.

So the northern part of Schleswig became part of Denmark on June 15<sup>th</sup>, 1920 under the name “Southern Jutland”. The southern part became part of Germany and is today the federal state “Schleswig-Holstein” (Fig. 7)



Fig. 9 - Slesvig Mi 26. Noting the Border Plebiscite held in 1920 in Zone 1. Currency Danish Kroner.



Fig. 10 - Slesvig Mi 26. 1920 Border Plebiscite. Currency German Mark

The border drawn between the two Zones (Denmark and Germany) has lasted to the present day and is not in contention (Fig 1, 8). ■

**References:**

- Encyclopedia Britannica Ed. 1978
- Dansk Center for Byhistorie
- Linn’s Stamp News April 24, 2017

***(Trifecta covers continued from p.2.)***

A second Argentine trifecta cover, also honors Argentina’s Antarctica claims, with a map cachet of those claims on a first day cover stamped with Sc # 851-853 in 1968. The cancellation is also a map of the Argentine Antarctica claim. Fig. 3.

Turkey issued a set of stamps in 1960 to celebrate the independence of Cyprus from Greece. Those stamps, Sc # 1484-1485 were used on the trifecta first day cover shown below. Sc #1485 is an excellent map of Cyprus. The cover cachet contains an outline map of Cyprus and the cancellation shows an outline map under a rising sun.



Fig. 4 - Turkey Sc 851-3. Cyprus Independence.

There are of course many more examples of trifecta covers. Maybe these will spark a special section in your map stamp collection. ■

**ILLINOIS**

Nickname(s): Prairie State; Land of Lincoln.

To Celebrate the bi-centennial of Illinois Statehood the USPS issued a 50c Forever stamp on 5<sup>th</sup> March 2018. Illinois became the 21<sup>st</sup> state in the Union on 3<sup>rd</sup> December 1818.



USA Sc 5274.

The stamp art is a graphic illustration featuring an outline of the state map with a series of yellow beams radiating upward like the rays of a rising sun. The colors on the map begin at the bottom with a deep yellow, representing the sun. The color fades upwards to pale yellow and then into pale blue, with increasingly deeper blues rising to the top of the map; the yellows and blues reflect the dawning of a new day as the state joined the Union. At the top of the stamp, 20 stars — 10 on each side of the map — are arranged in triangular patterns, reminiscent of the state’s centennial flag. The stars represent the first 20 states in the Union; the rising sun symbolizes the new state’s place on the American flag as the 21st star.

In 1858, incumbent Democratic Senator Stephen A. Douglas and Abraham Lincoln—for the most part unfamiliar at the time—engaged in a series of debates throughout Illinois for the state’s Senate seat. Although Lincoln lost the race, his warning against a nation divided between free and slave-holding states drew the attention of the nation, and he was elected president just two years later. ■

# Dejima, a Dutch Trading Post (factorij) in Japan

Ap Koopman

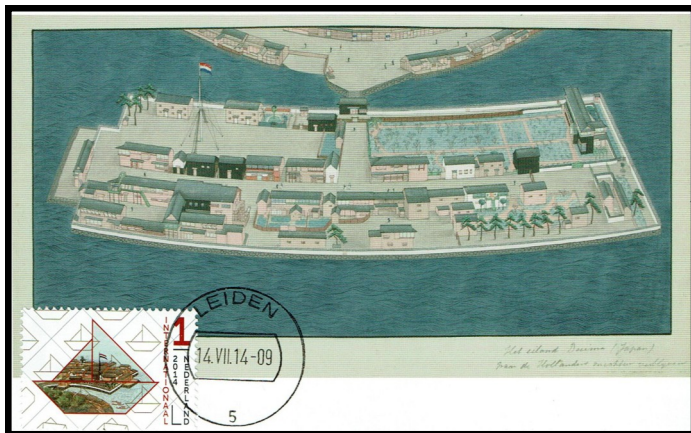


Fig. 1 - 2014 Nederland, postcard, print 19th century. View of Dejima, Nagasaki, the island where the Dutch were allowed to stay. Collection Museum Volkenkunde Leiden. With stamp showing Dejima, out of sheet block 154.

The exhibition 'Japan in kaart/mapping Japan' prompted me to finally complete the story about Dejima. In October 2017, I visited the Japanese Museum/Sieboldhuis in Leiden. This exhibition was a combination of maps and atlases from the Leiden University and the maps and books that were collected by Philip Franz von Siebold, after whom the Japan Museum/Sieboldhuis was named.



Fig. 2 - 2008 Nippon, world cultural heritage No. 4 Iwami Silver Mine. Stamp Michel 4086 out of sheet Scott 3067 (10v), Japan shown between Asia and America. Text "Tartaria sive Magni Chami Regni typus" map of Tartaria or the Kingdom of the Great Chan. Map by Ortelius 1570.



Fig. 3 - 1985 Nippon, postcard from the Nagoya Fair. Map of Japan circa 1600, after Teixeira's map in the Ortelius Atlas of 1595. Designer Fumito Ohtani, with stamp Michel 1629.

In Japan 'VOC' (The Dutch East India Company) is famous. Children learn about Dejima, the Dutch trading post in Nagasaki. Once a gateway to the West; now a symbol of openness and recently rebuilt.

## The Island



Fig. 4 - 1999 Nippon, Michel 2758DD, Nagasaki 80 yen.

Artificial Island of Dejima in Nagasaki Harbour

Dejima was a small, fan-shaped artificial island, constructed in Nagasaki harbour by the Tokugawa shogunate between 1634 and 1636. Its 15,000 square meters (3.7 acres less than two soccer fields), was the only place in Japan where commercial and cultural exchanges occurred between Japan and the West. At first with the Portuguese and then the Dutch.

Over the centuries, the name was written as 't eylant Schisma', 'Decima', 'Deshima' or 'Desjima'.

The modern-Japanese writing style is Dejima.

Dejima (Japanese: 出島, in the 17th century also 築島, Tsukishima) meaning: Island that sticks out.

Dejima was surrounded by a high stockade. The island was closed by gates; one on the sea side and one on the land side. The gate to the sea front was only open during the time when Dutch merchant ships were there, and was closed at the end of every working day. The gate to the country side was guarded day and night. Only on special occasions and with the written permission of the Governor could anyone leave the island.

From 1641 onwards, the Dutch East India Company (VOC) held exclusive trading rights with Japan. A staff of some 12 to 15 men was based at Deshima.

After 1853 the Dutch lost their special position. Dejima fell into disrepair and its contours gradually disappeared in the street map of the growing city. The original Dejima disappeared during the reclamation of the shallowest parts of the Bay of Nagasaki in 1898. But the people of Nagasaki have never forgotten Dejima. Plans for the reconstruction of the island began in the 1950-ies. First, it was necessary to buy land bit by bit and it took until the 21 century before they could start rebuilding. The restoration was completed in 2017.

## The First Contacts between Holland and Japan.

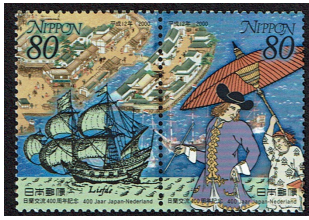


Fig. 5 - 2000 Nippon, Michel 2918/19. 400th anniversary of Japan-Netherlands cultural relations. Depicting the arrival of the First Dutch ship "Liefde" in Japan, a Dutchman and Nagasaki/Dejima.

From the mid-16th century the Portuguese expanded trade with the Japanese in the port of Hirado (Firando). Their drive to spread Christianity, in addition to trade, made the Japanese decide to move them to the small island (Dejima) in the bay of Nagasaki as a domicile rather than a prison. They stayed there until 1639, when they were forced to leave Dejima and move to Macao.

In 1585, Jan Huyghen van Linschoten, a Dutchman in the service of the Portuguese, made a trip from Macao to Nagasaki. He was well known throughout the region. In 1600 one of the ships of the fleet of Mahu, 'Liefde', looking for new trade routes around Cape Horn, was shipwrecked on the Japanese coast.

In 1609, the first two Dutch ships, the 'Griffioen' and the 'Roode Leeuw met pijlen' came to Japan to trade. From 1609 they had a base in Hirado. This was thanks to the positive contacts after the shipwreck (1600) and a letter of recommendation from Prince Maurits of Holland to settle a trade post. In 1641 the Dutch were forced to move to the artificial island of Dejima.

Given the experiences with the Portuguese, the Dutch were subject to strict requirements. In principle, one was sentenced to stay in Dejima. It was forbidden to learn Japanese, but in reverse, the Japanese were eager to learn Dutch and there are still fragments known in their language. All communication was only allowed through interpreters.

From 1633 until 1853, the country was completely cut off from the outside world. No one was allowed to go in or out of the country without permission. However, there was an exception for Dutch and Chinese traders. The Chinese were on another small island. During this period, the Dutch had a unique position in Japan. They were the only Westerners that came into contact with the Japanese. As a result, the Dutch were the only 'source' for knowledge and science from the West for the Japanese, particularly in the medical field. Dejima was also of great importance as a 'source of information' for the Dutch.

## The Rhythm of the Year.

The rhythm of the year was determined by the ships from Batavia. At the end of June two or three ships left for their journey of a month to Dejima. Trading lasted about three months. Then, at the end of October to mid-November, accounts were reconciled. The Chief ('Opperhoofd') transferred his responsibilities to his successor who came along with the ships from Batavia. The ships then returned to Batavia arriving by the end of the year. Once the ships left, the Dutch

Chief or "Opperhoofd" was required to make an annual 'Hofreis' journey to the court of the Shôgun in Edo (present-day Tokyo). This took place in the spring (February-May). After the journey to the Shôgun was complete, the next commercial year was planned (May to August).



Fig. 6 - 1997 Japan. Envelope with postmark showing Dejima and 4 stamps, Michel 2461/62/63/64. Depicting the Nagasaki Kaido Highway. In the Edo period, this highway connected Nagasaki and Kokura, for 57 ri (About 230 kilometers) by 25 stations. Under the seclusionism of the Tokugawa Shogunate, Nagasaki used to be an open port for people, knowledge and culture to enter Japan.

The Chief bore tribute and provided the Shôgun with information on such topics as the progress of Western sciences and the state of the world. On this occasion it was customary to offer gifts, usually in the form of exotic animals. In return the Japanese court offered so-called Japanese skirts. This men's clothing was the prototype of the robe as we know now in Dutch as 'japon', the name for women's clothing, referring to 'Japan'.

## Philip Franz von Siebold.

Philip Franz von Siebold is one of the most remarkable people to live on Dejima, allowing us to know much about Japan. In 1823 he came as a physician in the service of the VOC. During the period of the Napoleonic domination of Europe, the Dutch-Indian Administration was taken over by the English. There was no contact with Dejima, so the Dutch trade delegation of 1807 to 1817 was in effect locked up. Trade relations had to be rebuilt. Thanks to Von Siebold, the island was made livable again. He grew plants for botanical research and invited Japanese scientists to exchange knowledge in order to better understand Japanese society and culture. Probably he was also instructed to gather information about Japan, their trade and the Japanese political system.

As a doctor he had some opportunities. After curing an influential local officer, he was allowed to open a small clinic outside the trading post and make home visits to sick Japanese. So, he came into contact with Japanese doctors and scientists.

He was allowed to teach 'Hollandologen', Japanese who studied the Dutch language and culture and he gained some fame as a skillful physician and medical practitioner. Therefore he was given privileges, which made it possible for



Fig. 7 - 2014 Nederland, Michel block 154. (3 different sheets) 'Grenzeeloos Nederland/Japan'. Theme: culture, knowledge, trade. Sheet trade: images about the unique role of the Dutch in Japan following the landing in 1600 of the ship, called "Liefde" which resulted in 250 years of exclusive economic relations. Stamps in the form of Origami figures.

This sheet of stamps is about the exchange of knowledge between Japan and the Netherlands.

Top left: Hollandoloog Ötsuki Gentaku; Top right: Philip Franz von Siebold.

Middle left: courtesan by Vincent van Gogh 1887; middle right: red kimono by George Breitner 1893.

Bottom left: Dutch ship, "Liefde"; bottom right: drawing of Dejima.

him to leave the island temporarily and explore the flora and fauna. Besides being a doctor, he was a passionate naturalist and ethnologist.

Although formally prohibited there was an exchange of maps. The ink traces and notes on his maps prove Siebold's eagerness for knowledge and meticulous study of Japan. He wanted to document his journey and explore the unknown landscape on paper to know Japan better.

Siebold made a long journey to Edo where, collecting many objects, he came into possession of maps of Japan. Planning to return directly to Java most were already sent to Dejima, including seeds of tea plants. The maps were discovered and Siebold was accused of spying for the Russian State.

The possession of maps was strictly prohibited.

After a period of house arrest and investigations, Siebold was banned from Japan in October 1829. At that time he did not know that this ban would be lifted later.

## The Opening of Japan.

The pressure from abroad to open up the country was getting intense.

In 1804 a Russian ship with Von Kruzenstern called at Dejima. The Dutch Chief of Dejima played a mediating role in the negotiations with the aim to open up the port of Nagasaki without a positive result.

After 1840 there was hardly any trade, Dejima was more a diplomatic foothold for the efforts to open up Japan to the Western world. In 1844, King Willem II of Holland sent a letter to the Shōgun in which he called for the opening of Japan to other powers, but Japan wanted to stick to the 'sakoku' (isolation of the country).

With the threat of intervention by an American naval squadron, led by commodore Matthew Perry, negotiations were opened. It was necessary to translate everything from English into Dutch and then into Japanese. Other languages



Fig. 8 -1953 USA 5c. Michel 641. Centennial of the opening of trade relations with Japan by Commodore Matthew Calbraith Perry. Ships in the bay of Tokio.

were not known in Japan. The ports were opened up, which ended the importance of Nagasaki and Dejima.

First, Japan made an agreement with America, then, in 1855, a new trade agreement with the Netherlands. Other European countries followed, for which the Netherlands mediated through Dejima. It was the

end of their monopoly position in the trade relationship with Japan. The Netherlands was asked to advise on the modernization of the fleet and to take care of the training of Japanese naval officers. In 1883 a new Dutch Embassy was established in Tokyo. This marked the end for the trading post on Dejima. ■

### Sources:

- 'Japan in kaart/Mapping Japan' – Japan Museum/Sieboldhuis, Leiden, 2017
- 'Deshima, een factorij in Japan', Gottmer Educatief, Bloemendaal, 1985
- Boudewijn Büch – 'Aangeland in Japan', pages 201-215, – 'De hele wereld in een vitrinekast', Arbeiderspers, 2001
- Hubert Daxböck – 'Japan in Leiden', pages 12-25, The Blue Poet Society, jaarboek 2007
- A. van der Kuijp, '400 jaar betrekkingen tussen Nederland en Japan', Filatelie, 2000
- 'Terug naar Deshima', VPRO-OVT = TV-production, 2016
- see also TCNP 41, april 2013 - Pierre Moise, 'From Lisbon to Nagasaki, the Portugese Hemisphere' and ArGe LVE – RS 127, 3/2009 – Reese W. Plews, 'Entdeckung von Japan'

# The Liberia 1894 Map Stamp

Brian Marshall

In 1894 Liberia issued a 5 cents triangular stamp which included a globe /map as part of the design. The stamp appeared in two versions. The actual colours are described differently in the Scott and Stanley Gibbons catalogues. One was printed in carmine and black (Scott) or red and black (S.G.), The other, which had an O S overprint in black, was printed in violet and green (Scott) or lilac and green (S.G.).

The stamps were engraved and printed *tete-beche* (Figure 1) by Waterlow and Sons in London on unwatermarked white wove paper. Both forms of the stamp were issued both imperforated and rouletted. The Scott catalogue numbers are 52, 53 and 69, and O26 and 27. The Stanley Gibbons numbers are 117 and 180, and O130.



Figure 1.

The OS overprinting was done in London, and the letters are unserifed capitals with thin lines. Stamps with the OS overprint were later (1901-02) issued with a hand stamped ORDINARY overprint (Scott 69). This was done to make the stamps valid for ordinary postage. All cancelled stamps with the ORDINARY overprint are postmarked either Monrovia or Buchanan. Two font sizes were used for the overprint, one of them in both towns, and a second, using slightly larger type, in Monrovia only.

The triangular shaped stamp features a female figure representing "Commerce" and holding a caduceus, the astrological symbol for commerce. (The caduceus is the staff carried by Hermes in Greek mythology, and in Roman iconography was often depicted being carried in the left hand of Mercury, the messenger of the gods). The stamp also shows a globe with a clear outline of Africa and Europe. The design of the globe includes a grid. Other features of the stamp's design are

items of trade, two Krumen people (an ethnic group living mostly along the coast of Liberia and Cote d'Ivoire), and the wording "The love of liberty brought us here".

The stamp was described by The Philatelic Society London (1894) as one of the "speculatively beautiful issues" of Liberia. Stanley Gibbons described the stamps as "beautiful specimens of the work of Messrs. Waterlow and Sons". An English contribution (probably from Edward J. Nankivell) to *The American Journal of Philately* (1894) commented that the market in England "is veritably flooded with beautifully engraved stamps, made, of course, for collectors. There are the Liberia three cornered....".

The world's first triangular stamp was issued in the Cape of Good Hope in 1853, the second triangular shaped stamp was issued by Newfoundland in 1857. This is the first triangular stamp to feature a map (globe).

The stamps were printed in sheets each of 48 stamps, and were in use at least until World War I. The numbers of stamps printed is unclear. The Waterlow and Sons archive files, quoted by Cockrill (n.d.), indicate that 100,000 imperf. regular stamps, and 25,000 imperf. official stamps, were printed on December 15, 1893; and a further 10,000 rouletted regular stamps, and 5,000 rouletted official stamps, were printed on November 16, 1899. These figures are disputed by Manfred Beier (2012) of the Institut für Humangenetik und Anthropologie, Heinrich-Heine-Universität, who comments that "this cannot be the whole truth. With these numbers the imperforate stamp should be much more common than the rouletted variety, which it really isn't - at least not by a factor of ten. A more serious problem is that I've seen covers with rouletted stamps cancelled years before 1899 (I have a scan of a cover with a rouletted regular stamp and an 1895 postmark). So, ... there must have been at least one more order between these dates".

In 1892 the rate for foreign mail was lowered from 8 cents to 5 cents per ounce. The internal rate was 2 cents per half ounce for correspondence between townships within the same county. The rate for postcards in 1894 was 3 cents. Registered mail cost ten cents from 1882 until some time before 1950. Therefore this 5 cent triangular stamp was designed for foreign postage. Copies on cover are scarce because the quantity of mail posted from Liberia at this time was small (Figure 2).

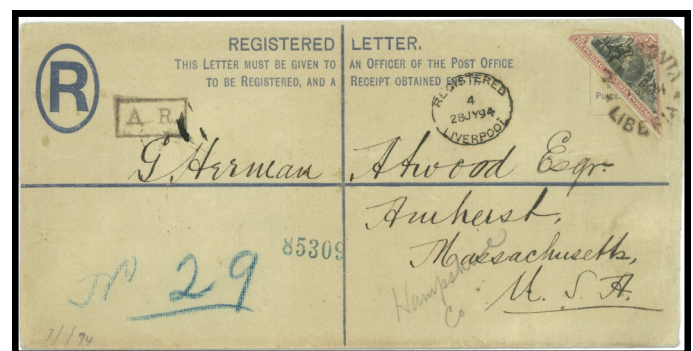


Fig. 2.

(Continued on p. 15.)

# Maps on Stamps New Issues

David Wolfersberger & K.K. Ang

The **Maldives** are a string of tiny tropical islands lying in the turquoise waters of the Indian Ocean. There are about 1,200 islands altogether, but only about 200 inhabited. They are low and flat, many only just sticking up above sea level. All are threatened by rising sea levels which reduce the area of land available.

Sinhalese people sailed west from Sri Lanka to settle the islands around 500 B.C. The Maldives became trading posts for the Portuguese and Dutch from the 1500s, then were ruled by the British from 1887 until independence in 1965. Tourism is by far the fastest-growing industry.

The Maldives issued a souvenir sheet (Scott 3286) highlighting some key events in Maritime History. Shown on one of the stamps is a Viking drekkr (9th century), a fast, ocean-going long ship. We often think of Vikings as savage raiders, looting and pillaging, but they were also intrepid travelers and traders. They were the first Europeans to visit North America. We are not sure why in the 9th century the Vikings decided to leave home. However, it is likely that the growing number of younger sons with no land to inherit drove many to seek their fortune abroad. Their boats called drekkr loaded up with provisions, they set out across the Atlantic Ocean.

The stamp titled Fleet of Columbus, 1492. Shows the three ships of the fleet, the *Nina*, the *Santa Maria* (center) and the *Pinta*. Italian Christopher Columbus dreamed of sailing west from Europe to reach Cipangu (Japan). In 1491 King Ferdinand and Queen Isabella of Spain agreed to fund his voyage. On 3rd Aug 1492 Columbus set sail from the Spanish port of Palos with three ships. After a stop in the Canary Islands, the fleet set off again on 6 September. In the night of 12 October, the lookout on the *Pinta* saw land. Columbus and crew landed on the island they named San Salvador and claimed it for Spain.

The next stamp shows the RMS Titanic. Royal Mail Ship (sometimes Steam-ship or Steamer), usually seen in its abbreviated form RMS, is the ship prefix used for seagoing vessels that carry mail under contract to the British Royal Mail. On April 10, 1912, the RMS Titanic, one of the largest and most luxurious ocean liners ever built, departed Southampton, England, on its maiden voyage across the Atlantic Ocean. At 2:20 a.m. on April 15, 1912, it sank into the North Atlantic Ocean about 400 miles south of Newfoundland, Canada. The massive ship, which carried 2,200 passengers and crew, had struck an iceberg two and half hours before.

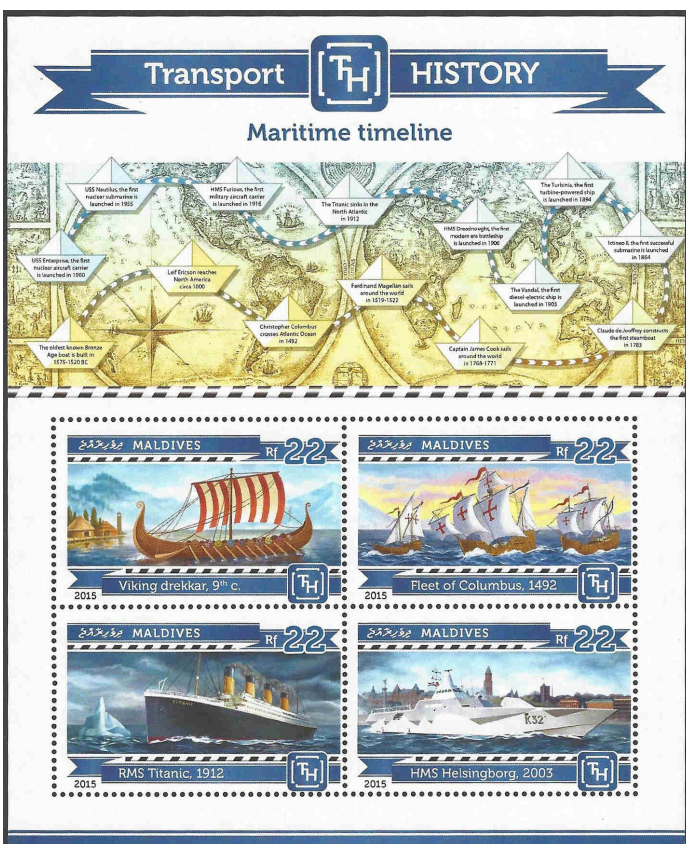
The last stamp is The Visby Class of stealth corvettes which were built for the Swedish Navy. HMS Helsingborg was launched in 2003. The design of the Visby aims to minimize the optical and infrared signature, above water acoustic and hydro acoustic signature, underwater electrical potential and magnetic signature, pressure signature, radar cross section and actively emitted signals.

At the top of the souvenir sheet is an old-world map with several important maritime milestones noted. Examples include “Capitan James Cook sails around the world in 1768-71;” and “USS Nautilus, the first nuclear submarine, launched in 1955.” This sheet thus has many interesting and important events from the long history of the oceans.

**Armenia** is a rugged country in the Little Caucasus Mountains, with deep gorges, lakes, and rushing rivers. The earliest peoples were probably farming the land around 6000 B.C. Ancient Armenia was once a powerful independent kingdom. After it was defeated by the Romans about 55 B.C., it became part of the Roman Empire, and later was conquered by Arabs and Turks. Between the 1890s and the end of World War I, the Turks massacred more than half a million Armenians; others were deported or fled. Over the years people from Armenia have settled in many other countries. Today there are an estimated 7 million Armenians living outside the country.

Modern Armenia is only the northeastern part of the old kingdom of Armenia. The Russians captured this area from the Turks in the 1920s, and it later became a republic of the Soviet Union. Armenia gained independence in 1991. The rest of historic Armenia is now largely part of Turkey.

Kars is a city in northeast Turkey and the capital of Kars Province; the largest city on the Turkish side of the closed border with Armenia. For a brief period of time in the 10th cen-



Maldives Sc 3286.

tury A.D., it served as the capital of the medieval Bagratid Kingdom of Armenia. Its significance increased in the 19th century, when Kars was contested between the Ottoman and Russian empires, with the latter gaining control of the city as a result of the 1877-78 war.

During World War I, the Ottomans took control of the city in 1918 and declared the Provisional National Government of the Southwestern Caucasus, but were forced to relinquish it to the First Republic of Armenia following the Armistice of Mudros. During the Turkish–Armenian War in late 1920, Turkish revolutionaries captured Kars for the last time. The controversial Treaty of Kars was signed in 1921 between the Government of the Grand National Assembly and the Soviet republics of Armenia, Azerbaijan and Georgia, which established the current north-eastern boundaries of Turkey.

Shirakavan founded as Yerazgavors and later Yerazgavork, was a medieval Armenian city and also one of the 13 historic capitals of Armenia like Kars, serving as a capital city between 890 and 929 during the Bagratid Kingdom of Armenia. The city was located on the right bank of Akhurian River to the northeast of Ani, corresponding with the current village of Çetindurak of the Akyaka district of Kars Province, within the Republic of Turkey.



Armenia Sc 1121 - 22.

In its continuing series recognizing the historic capitals, Armenia issued two stamps highlighting Shirakavan and Kars (Scott 1121-22). Scott 1122 has a view map of Kars when it served as the capital. The tabs on both stamps have a map of Armenia with the old capitals named.

**Malaysia.** After the Second World War, the Philippines, India, Pakistan, Burma and Indonesia became independent. Soon it would be Malaya's turn; Britain granted Malaya its independence on August 31, 1957. After independence, its Prime Minister suggested that North Borneo, Sarawak, Brunei and Singapore join Malaya to form a new country. Singapore already had its own self-government while the other territories were ruled by the British.

Most North Borneons (renamed Sabah) and Sarawakians wanted to join Malaya, and Singapore was also keen, so a new country was born on September 16, 1963. It is called the Federation of Malaysia. Because of political problems, Singapore was expelled from the federation two years later.

Continuing its tradition of issuing good map stamps, Malaysia issued two mini-sheets of 10 and a souvenir sheet (Scott TBD) featuring various Malaysian rivers. At the top of each mini-sheet is a map of the province where the river is located, and a map of the river.

The Kinabatangan River (Malay: *Sungai Kinabatangan*) is a river in Sabah, Malaysia. It is the second longest river with a length of 560 km (350 mi) from its headwaters in the mountains of southwest Sabah, to its outlet at the Sulu Sea, east of Sandakan.

Sheet 1: Kinabatangan River. Kinabatangan is known for its remarkable wildlife and fascinating habitats such as limestone caves at Gomantong hill, dryland dipterocarp forests, riverine forest, freshwater swamp forest, oxbow lakes and salty mangrove swamps near the coast.



Sheet 1 - Malaysia Sc TBD. Sungai Kinabatangan.

Sheet 2: Sungai Pahang River: Pahang is a sultanate and a federal state of Malaysia. With an area of 35,840 square kilometers, it is the third largest Malaysian state and the largest in Peninsular Malaysia. Its territory comprises roughly 11% of the total land area of Malaysia.



Sheet 2- Malaysia Sc TBD. Sungai Pahang.

Pahang River (Malay: *Sungai Pahang*) is the longest river on the Malay Peninsula. It rises in two headstreams, the Jelai and Tembeling, about 10 miles (16 km) north of Jerantut and flows south past Temerloh, paralleling the Main Range to Mengkarak, where, at the break of slope between the mountains and the plains, it abruptly turns eastward. The river then completes its 271-mile (436-kilometer) course, through alluvial plains more than 20 miles (32 km) wide, to empty into the South China Sea at Pekan.

Souvenir Sheet: Rajang River. The Rajang River, located in Sarawak on Borneo Island, its headwaters are in the Iran Mountains in the central part of the island. At 563 kilometers, it is the longest river in Malaysia. The river's route and key cities are shown on a map that is on the stamp and sheet margin.



Souvenir - Malaysia Sc TBD. Sungai Rajang.

**St. Pierre & Miquelon.** A beautiful nautical chart is on a souvenir sheet released by St. Pierre & Miquelon to honor the great yachtsman and naval officer Eric Tabarly. Tabarly won many “single handed” trans-Atlantic, trans-Pacific, and other yacht races. Unfortunately, he was killed in 1998 when he went overboard while sailing from France to Scotland.

On the margin of the sheet (Scott 1052), to the left of the top stamp, is a nautical map of the Atlantic Ocean around the three main islands – Grande Miquelon, Petit Miquelon, and Sainte Pierre. To the right the nautical map continues showing part of the Island of Newfoundland around Placentia Bay. The chart shows depths and contour lines around the major and minor islands in the area of the chart.



St. Pierre & Miquelon Sc 1052.

**French Southern & Antarctic Territories (FSAT)** has issued many excellent map stamps. They recently added a few more good maps. Scott 588 is a souvenir sheet noting Mission Genty. This expedition to Kerguelen Island in 1955 established a base at Baie de l’Aurore Australe, the Baie du Morbihan. The plan was to construct an airfield, which was never done. Perhaps it was not build because of cost or the hostile environment. The stamp has a map of part of Grande Kerguelen Island with several features identified. On the margin is a larger map of the island, again with some places named.



FSAT Sc 588. Mission Genty.

Two additional FSAT stamps recently issued are:

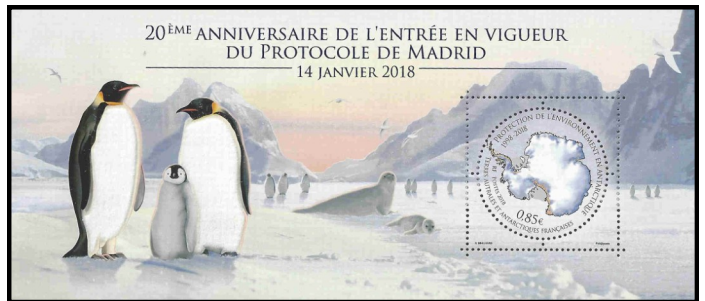


FSAT Sc 580. Pierre Etienne de Boynes.

Scott 580: 300th birth anniversary of Pierre Etienne de Boynes: He was secretary of the French navy when the islands of the Kerguelen Archipelago were discovered. Four small islands about 20 miles south of the main

Kerguelen Island are named after him; two are shown on the stamp.

Scott 586: 20th anniversary of the Madrid Protocol (Protocol on Environmental Protection to the Antarctic Treaty): Agreements to help preserve the environment of Antarctica. Antarctica shown on stamp.



FSAT Sc 586. 20th Anniv. Madrid Protocol.

**Bulgaria** issued a very interesting souvenir sheet (Scott TBD). The Zeppelin LZ104, renamed the L59 by the German navy, departed from Yambol, Bulgaria on November 21, 1917, loaded with supplies for part of the German army trapped in the Sahara. The intent was to make this a one-way trip, leaving all supplies for the troops. However, after flying for two days, the airship received a message to abandon the flight and return

home. The veracity of this message has been challenged, but never-the-less the L59 returned to its home base, thus completing the longest military flight in an airship on record, one that still stands today. A good map showing the route from Bulgaria, across the Mediterranean into Egypt and back is shown on the margin. The L59 is on the stamp and General Lettow-Vorbeck, leader of the trapped German force, is also on the sheet margin.



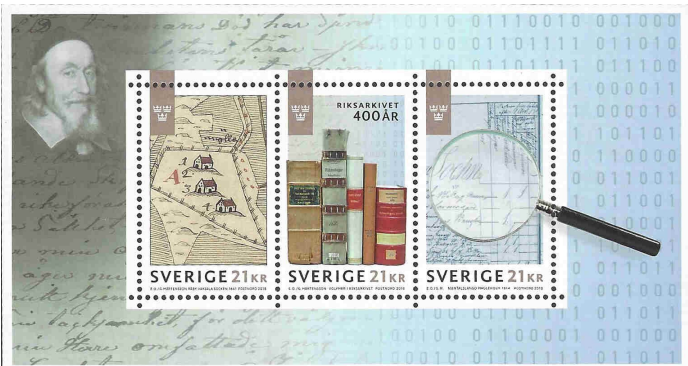
Bulgaria Sc TBD. Zeppelin flight route.

An official act of the **Austrian** government in 1868 created the current form of local governing – Bezirkshauptmannschaften or District Commissions. Each District Commission is lead by a District Governor (Bezirkshauptmann). This new organization resulted from the Constitution of 1867 that separated the judiciary and legislative activities. The 150th anniversary of this change in governmental organization is commemorated by a souvenir sheet of two (Scott TBD). In the background of the sheet is an old, detailed map of Austria and surrounding countries.



Austria Sc TBD. 150th Anniversary of change in Government.

The National Archives of **Sweden** was established in 1618 to preserve the country’s important documents about its history, cultural heritage, society and individuals. To mark the 400th anniversary, a souvenir sheet (Scott TBD) of three was issued. The stamps show a 1641 map of Upsala County; historical books in the Archives; and 1815 entries of mantals in Kristianstad County. (Note: “Mantal” refers to the economic value of land not just its area.)



Sweden Sc TBD. National Archives.

“What there is of **Mauritius** is beautiful,” wrote Mark Twain in 1896. Deserted beaches as soft as powder, misty volcanic peaks, and fertile plains lured settlers from many different countries.

Mauritius is the largest island in a group that makes up the country of the same name. No people were living here when Arab seafarers discovered it a thousand years ago. The island was visited by Portuguese sailors and then settled in 1598 by the Dutch, who named it after Prince Maurice of Nassau. Then the French came, calling it the Ile de French and shipping in slaves to plant sugarcane. In the early 1800s, the island was colonized by the British, who brought Indian laborers to work the huge sugar plantations. Independence came in 1968, and Mauritius became a republic in 1992.

All kinds of animals have lived on the rocky island of Mauritius over the years, but many have become extinct, including a large bird called the dodo. Dutch explorers first spotted the flightless bird in 1598, but it was extinct within 100 years, a victim of man and the predatory animals that he brought with him to the once-uninhabited island.

Two thirds of the Mauritian population are descended from indentured Indian plantation workers, one third are Creoles descended from freed African slaves, and the remainder are Chinese or French.

Tromelin Island is a low, flat, island in the Indian Ocean about 500 kilometers north of Réunion, and about 450 kilometers east of Madagascar. Tromelin is administered as part of the French Southern and Antarctic Lands, a French overseas territory; however, Mauritius claims sovereignty over the island, on grounds of its absence in the listing of the 8th article of the French version of the 1814 Paris Treaty. France and

Mauritius have been negotiating for years in regard to the possible establishment of a condominium over the island.

Tromelin has facilities for scientific expeditions and a weather station. It is a nesting site for birds and green sea turtles. The island is named for the chevalier Bernard Boudin de Tromelin, the captain of the French warship La Dauphine who arrived at the island on November 29, 1776, and rescued 16 stranded people.

Mauritius recently issued three map stamps that highlight several interesting facets of the country:

Scott 1172: This stamp shows the Chagos Archipelago, an area that was separated from Maritius by the British prior to independence. Mauritius is asserting its claim that this Archipelago, including the key island of Diego Garcia, belong to it.



Mauritius Sc 1172.



Mauritius Sc 1173.  
Maritime Zones.

Scott 1173: This stamp shows the entire country, including some disputed areas (see below). Highlighted are "Maritime Zones" around the various islands. Maritime zones mean those areas that a country claims for its sole economic benefit.

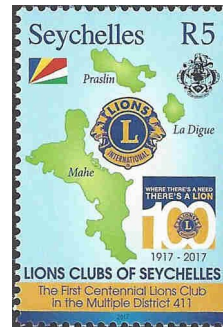
Scott 1174: This a map of Tromelin Island which, as discussed above, is disputed between France and Mauritius.

Mauritius Sc 1174. Tromelin Island.



In 1917, Melvin Jones, a 38-year-old Chicago business leader, told members of his local business club they should reach beyond business issues and address the betterment of their communities and the world. Jones' group, the Business Circle of Chicago, agreed. After contacting similar groups around the United States, an organizational meeting was held on June 7, 1917, in Chicago, Illinois, USA. The new group took the name of one of the invited groups, the "Association of Lions Clubs," and a national convention was held in Dallas, Texas, USA in October of that year. A constitution, by-laws, objectives and a code of ethics were approved. Since then Lions Clubs International has been a leader in humanitarian service world-wide.

**Seychelles** issued a commemorative stamp to celebrate the 100th anniversary of the Club, (Scott 906.) The stamp features maps of the largest of 115 islands comprising the Archipelago: Mahe, La Digue, and Praslin. The Seychelles are beautiful islands which lie in the clear blue waters of the Ocean about



Seychelles Sc 906. Lions Club 100th Anniv.

1,500 kilometers off the coast of East Africa. Mahe Island, in the north, is mountainous, with granite rocks, streams, and white sandy beaches. This island is the largest of the Seychelles and home to over 80 percent of the population.

The islands were discovered by Portuguese sailors in the 1500s and for many years were the hiding place of European pirates and outlaws. The first permanent settlers came in 1756, when the French brought slaves from Africa and planted sugarcane. The British captured the island in 1794, and workers were moved in from India and China. It became an important depot for shipping spices and slaves.

Today's population is of mixed descent. Most Seychellois people are Creoles – people of mixed African, Asian, and European ancestry. There are also small Chinese and Indian communities. Tourism took off in the final years of British rule, and the islands gained independence in 1976. Although Britain ruled the French-discovered islands for 162 years, many Seychellois still speak 18th-century French.

Cuba issued a souvenir sheet "History of the Telephone." On the sheet margin is an 1895 city map of Havana, showing the first telephone network.

A good image of the original map can be found at :



[https://en.wikipedia.org/wiki/Telecommunications\\_in\\_Cuba#/media/File:Red\\_Telefonica\\_De\\_La\\_Habana\\_1895.jpg](https://en.wikipedia.org/wiki/Telecommunications_in_Cuba#/media/File:Red_Telefonica_De_La_Habana_1895.jpg).

**New Caledonia** Scott 1232: These stamps feature architecture in New Caledonia. The label has a map of the country, with the locations of the buildings shown on the stamps highlighted and named.



New Caledonia Sc 1232.

*(New Issues contd. on p. 14.)*

**Maps on Stamps New Issues Updates March 2018 to May 2018**

**Grades: A = High quality map, important feature on stamp. AR = Old or historic map. OC = Map makers and equipment.**

**Grade O not included but will be on the next Checklist update. They can also be viewed at [mapsonstamps.org](http://mapsonstamps.org)**

<b>Date</b>	<b>Country</b>	<b>Issue</b>	<b>Scott</b>	<b>Format</b>	<b>Grade</b>	<b>Coverage</b>	<b>Face Value</b>
2017	Albania	Int'l Immigrant Day	3003b		A	Europe	90 l
2017	Armenia	Kars, Armenian Capital 929-61	1122		AR	View map of Kars	160d
2018	Austria	150th anniv. Of District Commissions	TBD	S/S of 2	AR	Old map of Austria on sheet margin	68c each
1978	Bolivia	Hondurass '78 Stamp Expo	610 note	S/S	A	Honduras on margin	5b
1978	Bolivia	UPU, Lindbergh, Zeppelin	C358a note	S/S	O/AR	UPU emblem, Zeppelin cover with cachet showing route of Zeppelin	25b
2017	Bulgaria	100th anniv flight of airship L59.	TBD	S/S	A	Bulgaria, Turkey, Egypt showing route of flights	0.65
2017	Chile	Vincente Perez Rosales National Park	1655		A	Chile	360p
2018	Croatia	Mine safety day	TBD		A	Croatia	3.10
2015	Cuba	History of the Telephone	5709	S/S	AR	Cuba showing telephone lines	1p
2017	Dominican Republic	Colonial era buildings	1621	Sheet of 8 + central label	AR	Old map on sheet margin	12p each
2017	French Southern & Antarctic Territories	Birds and Reptiles	574	Sheet of 4, 784a-d	A	Europa Island on margin	3x85c, €1.45
2018	French Southern & Antarctic Territories	Pierre Etienne de Boynes, 300th birth anniv.	580		A	Iles de Boynes, Kerguelen	85c
2018	French Southern & Antarctic Territories	20th anniv. Madrid Protocol	586	S/S	A	Antarctica in emblem	85c
2018	French Southern & Antarctic Territories	1956 Mission	588	S/S	A	Kerguelen on stamp and margin	€ 3.90
2017	India	INS Kalvari	2978a	S/S of 3	A	India on margin	5r each
2016	Iran	2016 New Year	3161	S/S	A	Iran	9000r
2017	Italy	500th anniversary of the death of Franz von Taxis, founder of Taxis post	TBD		AR	Italy showing post route	95c
2017	Italy	150th anniv. Italian Geographic Institute	TBD		AR	Globe and atlas	95c
2017	Latvia	Roja Lighthouse	TBD		A	Roja region sea chart	90c
2015	Liberia	WWI - Alpine Troops in Italy	3037	S/S of 4, 3037a-d	A	Northern Italy on margin	\$100 each
2015	Liberia	WWI - Alpine Troops in Italy	3038	S/S	A	Northern Italy on margin	\$350
2017	Libya	Feb. 17th revolution 6th anniv.	1822	Pair, 1822a0b	A	Libya on each	500d, 1000d
2017	Macedonia	25th anniv. Army	754		A	Macedonia	18d
2017	Malaysia	"My Country"	1708	S/S	A	Malaysia	3Rm
2017	Malaysia	"My Country"	1709	S/S	A	Malaysia	6Rm
2017	Malaysia	Post Crossing/World Post Day	1710-11	Pairs, 1710a-b, 1711a-b	A	When the 4 stamps are placed together, there is globe	50c each
2018	Malaysia	Rivers of Malaysia	TBD	3 souvenir sheets	A	Maps of rivers on stamps, map of province on margin	60s, 80s, 8 Rm
2015	Maldive Islands	Maritime History	3286	S/S of 4, 3286a-d	A	World map with major maritime historical events noted	22r each
2017	Mauritius	Maps of Islands	1172		A	Seafloor at Chagos Archipelago	10r
2017	Mauritius	Maps of Islands	1173		A	Mauritius economic zones	18r
2017	Mauritius	Maps of Islands	1174		A	Tromelin Island	25r

Date	Country	Issue	Scott	Format	Grade	Coverage	Face Value
2017	Monaco	MonacoPhil '17	2907	S/S of 2, 2907a-b	A	Western Hemisphere on margin	€2.60 each
2017	New Caledonia	Roger Girvilino	1226		A	New Caledonia	1000fr
2017	New Caledonia	Lions Club cent.	1230		A	New Caledonia	75fr
2017	New Caledonia	Architecture in New Caledonia	1232	Two stamps + label	A	New Caledonia on label	75fr each
2018	New Zealand	Legend of Māui and the Fish - Te Ika-a-Māui	TBD		AR	North Island of New Zealand	\$3.60
1980	Nicaragua	Olympics	1102E, 1102Ek	Red, silver overprint on Zeppelin cover	A	Route of Zeppelin	5 cor
2017	Russia	19th World Youth Games	TBD	S/S of 5 + label	A	Russia on label	35r each
2017	Saint Pierre & Miquelon	Yachting	1052	S/S of 2	A	Sea chart of St. Pierre and surrounding area	€1, €2
2017	Senegal	UN conference	TBD		A	Africa	200fr, 450fr, 1000fr
2017	Seychelles	Lions Club cent.	906		A	Seychelles	5r
2018	Slovenia	World Design Day	TBD		A	World map on cube	1.00
2018	Spain	20th anniv Antarctica Environmental Protocol	TBD		A	Antarctica	1.45 €
2018	Spain	300th anniversary of the transfer of the authority "Casa de Contratación" to Cádiz.	TBD		AR	Historical map of Cadiz	B rate (€1.35 when issued)
2018	Sweden	Archives	TBD	S/S of 3	AR	Old land map - Uppsala 1681	21kr each
2018	United States	200th Anniv. Illinois Statehood	5274		A	Illinois	Forever, 50c when issued
2017	Uzbekistan	25th anniv. Constitution	842	S/S	A	Uzbekistan on margin	4000s

**(New Issues continued from p. 12.)**

**Malaysia** Scott 1710-11: These are included because they a “fun” stamps, with the four stamps forming a globe that shows southeast Asia. They were issued to the 2017 World Post Day and show various activities relating to using the traditional mail.



Malaysia Sc 1710-11.



Namibia Sc 1349. Included in New Issues TNCP 61.

**(Continued on p. 15.)**

**(Liberia map stamp continued from p. 7.)**

The design of the stamp was most probably the work of Henry (Harry) L. Hayman (1850-1927). Hayman was a respected British philatelist who also happened to perform certain tasks for the Liberian Government. Initially he was the Liberian consul in Liverpool, and in 1891 was appointed Acting Minister Resident in London for the Liberian Government. Hayman also held positions as First Secretary (Commercial) at the Liberian Embassy in London as well as Consul-General in London. Around 1890/91 Hayman obtained a contract with the Liberian Government "whereby he would be responsible for the design, production and supply of future Liberian postage stamps" (Cockrill, [n.d.], p.46).

**Sources:**

Beier, Manfred. pers. comm. 25 September 2012.

Cockrill, Philip. *Liberia, postal history & stamps 1835-1945*. Hampstead Norreys, Berkshire, the author [n.d.]

[Nankivell, Edward J.] Our English letter. *The American Journal of Philately*, v.7(Second Series), 1894: 132-134.

Philatelic Society, London. New issues. *The London Philatelist*, v.3(26), 1894: 51-53.

Rogers, Henry Harper. *A Century of Liberian Philately*. Winnipeg, K. Bileski Ltd. [n.d.]

Scott Publishing Co. *2005 Classic Specialized Catalogue, stamps and covers of the World including U.S. 1840-1940 (British Commonwealth to 1952)*. Sidney, OH., Scott Publishing Co., 2004.

Stanley Gibbons. Novelties, discoveries, and resuscitations – Liberia. *Philatelic Record*, v.16, 1894: 37-38.

Colour trials in various colours exist, with black, blue and carmine red centres. Copies exist also with WATERLOW & SONS LTD. / SPECIMEN overprinted in two lines, with all the letters unserifed. The Waterlow specimens exist with black, green and brown centers, while the OS overprint specimens exist with chestnut and green centres. The specimen stamps were printed in complete sheets of eight stamps.

Cockrill notes that forgeries in the issued colours exist, the forgery in violet lacks the O S overprint however. As these stamps are not of great monetary value the forgeries were presumably designed to deprive the Liberian postal service of income. ■

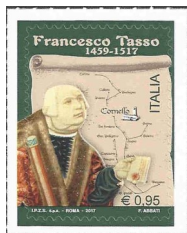
**(New Issues continued from p. 14.)**

**Italy** Scott TBD-1: The Società Geografica Italiana (Italian Geographic Society) was founded in 1867 to "promote the advancement of geographic knowledge." Its library has over 300,000 volumes and 50,000 maps. It also publishes a quarterly journal and numerous monographs. To recognize the 150th anniversary of the Society, Italy issued a stamp showing an old globe and atlas, and the Society's headquarters in the background.



Italy Sc TBD. 150th Anniv. Geographic Soc.

**Italy** Scott TBD-2: This stamp honors 500th death anniversary of Francesco Tasso (also known as Franz Taxis), the founder of the European postal service. In 1490, Francesco Johann Baptista von Taxis, formed a system where couriers carried mail from one outpost to another, where they would exchange horses for the journey, rather than pass the items to a different person. The map on this stamp shows the original system in Italy and Germany. ■



Italy Sc TBD. Francesco Tasso.

## West Indies Federation 1958 Issue

Established in 1958, the West Indies Federation comprised the territories of: Antigua and Barbuda, Barbados, Dominica, Grenada, Jamaica, Montserrat, the then St Kitts-Nevis-Anguilla, Saint Lucia, St Vincent and Trinidad and Tobago. The Federation was established by the British Caribbean Federation Act of 1956 with the aim of establishing a political union among its members.

During the Federation's short existence, each member continued to issue its own postage stamps; but on 22 April 1958, the members each issued a set of three commemorative stamps printed in blue, green and red. The stamps used a common design depicting a map of the Caribbean and a portrait of Queen Elizabeth II, with an inscription reading "THE WEST INDIES / FEDERATION 1958" at the top and the name of the member at the bottom.

The denominations (images shown in bold.)

Antigua, Barbados, Dominica, Grenada, Montserrat, St Christopher-Nevis-Anguilla, Saint Lucia, St Vincent 3c, **6c**, **12c**  
Trinidad and Tobago 5c, 6c, 12c  
Jamaica 2D, **5D**, 6D equal to British pound



Jamaica 5D. Sc 176

Barbados 6c. Sc 249

Antigua 12c. Sc 124



**Collectors of Maps on stamps**

Editor: Martin Oakes  
2100 Oriole Drive  
Freeport, IL 61032, USA  
Email: [editor@mapsonstamps.org](mailto:editor@mapsonstamps.org)



[www.mapsonstamps.org](http://www.mapsonstamps.org)

ISSN 1930-2053

The views and opinions expressed in this journal are those of the authors and do not necessarily reflect the official policy or position of The CartoPhilatelic Society, its officers or members.

The CartoPhilatelic Society is a nonprofit philatelic organization with a world-wide membership of collectors of maps on stamps. Founded in 1955, the organization was rejuvenated in 2003. We are associated with the American Philatelic Society and the American Topical Association. Annual dues are US\$20 for residents of the USA only, and US\$25 for members residing elsewhere for hard copy, and US\$15 for PDF everywhere. You are cordially invited to join us and share our enthusiasm for maps on stamps. A membership application may be found on our website or obtained from the Secretary. Please send your application and dues to the Treasurer.

President	Mark Honig	Kluivervkamp 28	1541 XZ Koog aan de Zaan, Netherlands
Vice President & Checklist Editor	David Wolfersberger	5062 NW 35 <sup>th</sup> Lane Road.	Ocala, FL 34482-4816
Secretary	Marybeth Sulkowski	Unit 209 1117 Douglas Ave.	North Providence RI 02904
Treasurer	Phil Coop	4350 Tuckahoe Road	Memphis, TN 38117
European Rep.	Volker Woesner	Sandkoppel 10	24119 Kronshagen Germany
Rep. at Large	Stuart Hamilton	PO Box 384	East Melbourne, VIC 8002 Australia
Asia/Pacific Rep.	Brian Marshall	86 Shackleton Road	Mt. Eden, Auckland, 1024, NZ
Webmaster	Reese Plews		<a href="mailto:admin@mapsonstamps.org">admin@mapsonstamps.org</a>

© 2018 The CartoPhilatelic Society. All rights reserved. Reproduction prohibited without express permission of Editor or Author.

## The CartoPhilatelic Society will Meet at StampShow 2018

**Reminder:** The CartoPhilatelic Society will meet at the joint American Topical Association/American Philatelic Society StampShow 2018, Columbus, Ohio, August 9-12, 2018. CPS meeting details:

Date: Saturday, August 11

Time: 11:00 am

Room: B143 in the Columbus Convention Center Hall B

Details about the show, including hotel reservations, are available at <https://stamps.org/STAMPSSHOW-SS>.

This promises to be a great show, with 125 dealers, 51 societies and study unit meetings, and 1000 display pages.

Be sure to register for the ATA sponsored President's Reception to be held at Schmidt's Sausage House Friday, August 10 (transportation from hotel provided) and the all-day tour on Monday, August 13. Details and sign-up information are on the ATA website <http://americantopicalassn.org/ntss/ntss2018.shtml>

Also, help is needed to staff the ATA booth on the show floor. If you could volunteer several hours during the show, that would be helpful. Please let David Wolfersberger ([dewolf2@swbell.net](mailto:dewolf2@swbell.net)) know if you plan to attend the StampShow, and if you can help at the ATA booth.

### A GENTLE DUES REMINDER

The Treasurer would like to thank all those members who have paid dues for the 2018-2019 Carto year. There are just a few members remaining to be paid before we can close this dues year. Full details on renewing may be found at [www.mapsonstamps.org](http://www.mapsonstamps.org). Thanks for your support!

### Editorial Comment

It is me again. The ink in your pen...

In May of this year we had no articles for TNCP. I proposed we change our distribution to two journals a year.

Several of you stepped up (the Authors in this edition) and wrote articles. We thank you!!!

Without articles (of any length) TNCP is not viable.

You don't have to be a great writer. I can take care of the details and edit for accuracy etc.

PLEASE just write about what interests you.

**Editor**